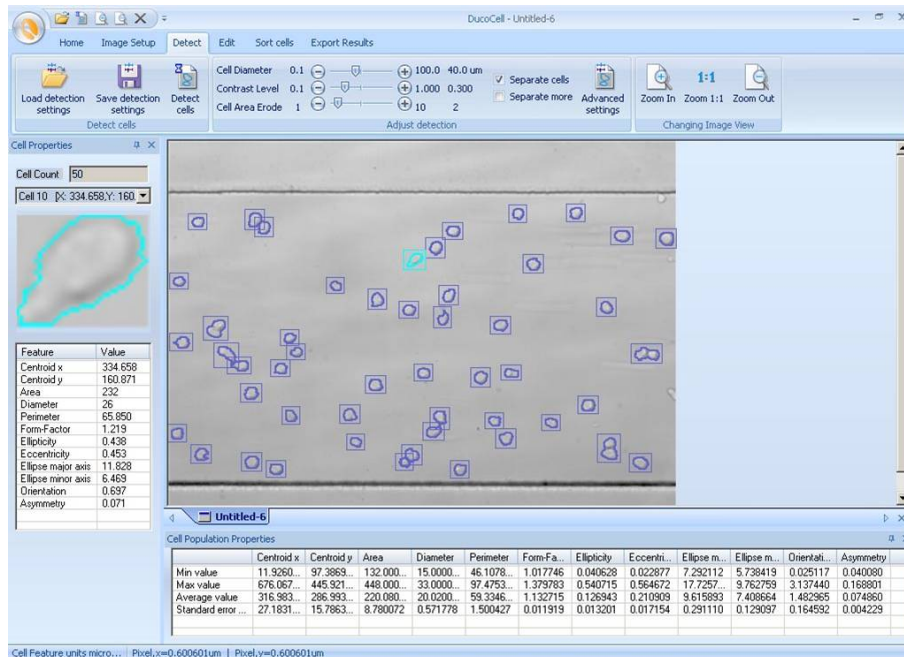


## DucoCell™ 1.1 Cell Analysis Software



DucoCell is an easy to use cell analysis software package. It provides fast and reliable cell counting and analysis of several morphological parameters of cells within an image including area, diameter, perimeter, ellipticity, form-factor etc. Analyses of several images may be executed automatically and subsequently exported to an Excel spreadsheet while simultaneously generating a graph from results obtained.

- **DucoCell™ 1.1 Performance Specifications:**

**Counting and Detection:**

Automatic

**Automatic cell analysis:**

Area, diameter, form-factor, ellipticity, eccentricity, orientation, perimeter, asymmetry, cell centroid coordinates, elliptical axis.

**Cell sorting and filtering:**

Ability to analyse sub-populations based on inclusion/exclusion of morphological parameters.

**Data representation:**

Data may be exported to Excel spreadsheet incorporating automatic graph generation (e.g. % cell adhesion vs. shear stress)

- **DucoCell™ 1.1 Technical Specifications:**

**File Formats analysed:**

\*.jpg, \*.jpeg, \*.tif, \*.tiff, \*.bmp, \*.gif, \*.png

**Hardware control: PC requirements:**

Pentium 4 processor 1.7GHz or higher, 256MB or RAM, 40GB Hard Disk, CD-ROM for installation.