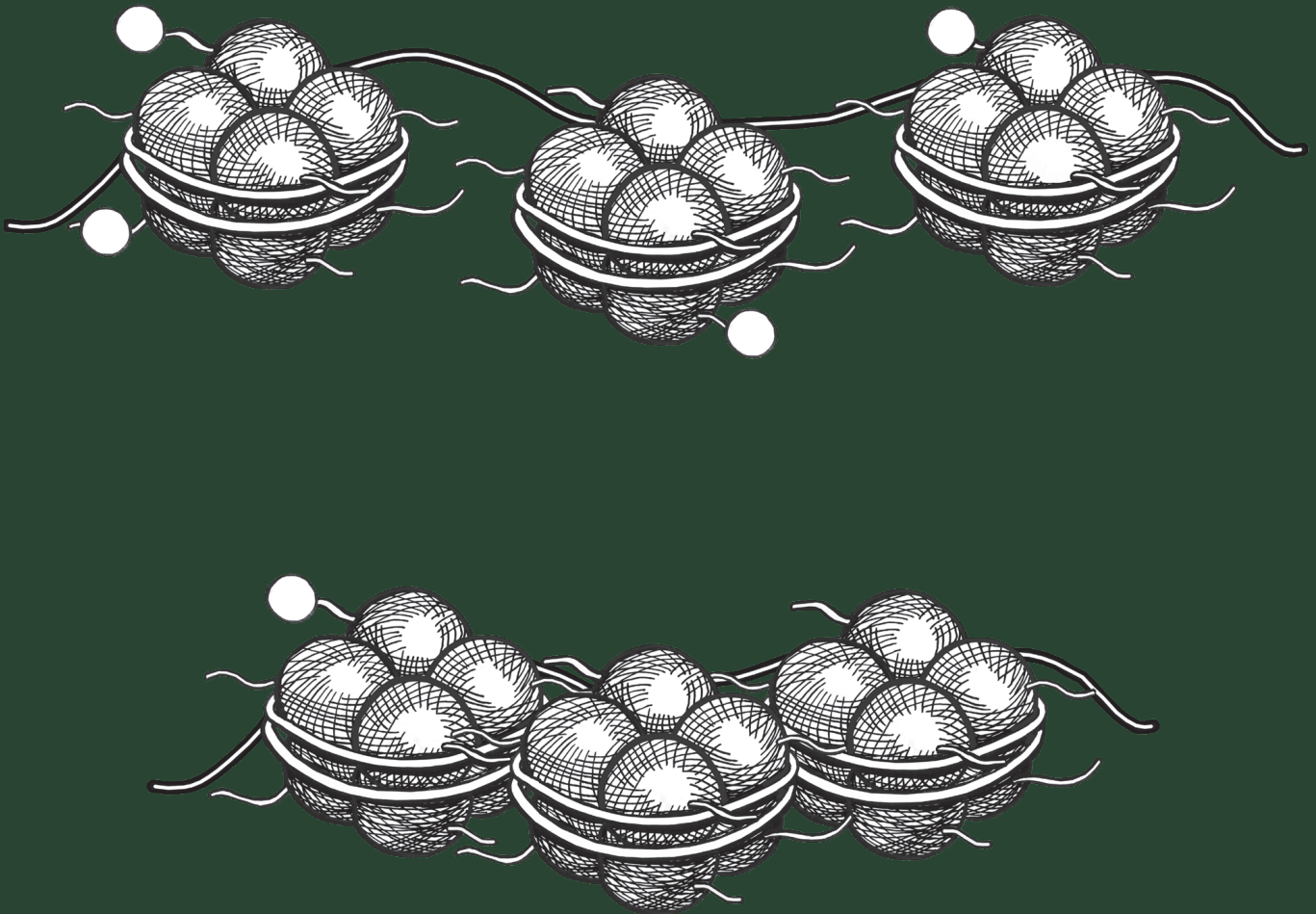


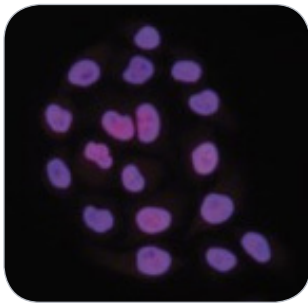
# EPIGENETICS



# EPIGENETICS

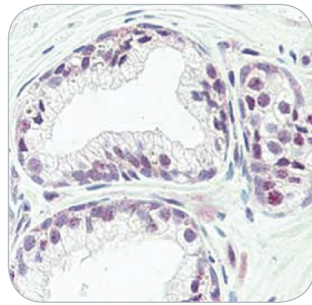
biossusa.com 

H3K27ac | bsm-53022M



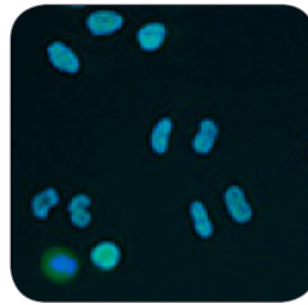
ICC | HeLa cells

TAF1 | bs-53045R



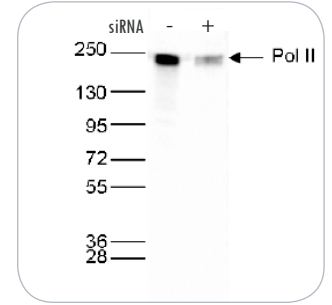
IHC-P | Human prostate

HDAC1 | bs-53113R



ICC | HeLa cells

Pol II | bsm-53004M



WB | HeLa cells

TARGET	APPLICATION	SPECIES	CATALOG
BMI1	ELISA	Hu, Ms, Rt	bs-2999R
BRD2	ELISA	Ms	bs-53056R
CBX2	ELISA	Ms	bs-53083R
CDYL	ELISA	Hu, Ms	bs-53086R
DNMT3A	WB, ELISA, IP	Hu	bs-53128R
EHMT1	WB, ELISA	Hu, Ms	bs-53068R
ER alpha	WB, IHC, ChIP	Hu	bsm-53007M
EZH2	ChIP	Hu	bsm-53018M
H2A pan	WB, ELISA, ICC, ChIP	Hu	bs-53140R
H2AK5ac	WB, ELISA, ChIP, DB	Hu	bs-53146R
H3 pan	WB, ELISA, ChIP	Hu, Ms, Rt	bs-53074R
H3K18ac	WB, ELISA, IF, ChIP, DB, ChIP-seq	Hu, Ms	bs-53137R
H3K27ac	ELISA, ICC, ChIP	Hu	bsm-53022M
H3K27me1	WB, ELISA, IF, ChIP, DB	Hu, Others	bs-53108R
H3K27me2	WB, ELISA, IF, ChIP, DB	Hu	bs-53109R
H3K27me3	WB, ELISA, IF, ChIP, DB	Hu, Ms, Rt, Zebrafish, Drosophila	bs-53122R
H3K27me3 (Ser28)	WB, ELISA, IP, IF, ChIP, DB	Hu	bs-53053R
H3K36me1	WB, ELISA, IF, ChIP, DB	Hu	bs-53131R
H3K36me2	WB, ELISA, IF, ChIP, DB, ChIP-seq	Hu	bs-53071R
H3K36me3	ELISA, IF, ChIP	Hu	bsm-53021M
H3K4ac	WB, ELISA, IF, ChIP, DB	Hu, Yeast	bs-53139R
H3K4me1	WB, ELISA, IF, ChIP, DB, ChIP-seq	Hu, Ms	bs-53106R
H3K4me3	WB, IF, ChIP, DB, ChIP-seq	Hu, Ms, Others	bs-53103R
H3K56ac	ELISA, ChIP, DB	Hu	bs-53145R
H3K64me3	WB, ELISA, ChIP, DB	Hu	bs-53144R
H3K79me1	WB, ELISA, ChIP, DB, ChIP-seq	Hu, Yeast	bs-53126R
H3K79me2	WB, ELISA, ChIP, DB, ChIP-seq	Hu	bs-53111R
H3K79me3	WB, ELISA, IF, ChIP, DB	Hu, Ms, Yeast	bs-53121R
H3K9/14ac	WB, ELISA, IF, ChIP, DB, ChIP-seq	Hu, Ms, Others	bs-53093R
H3K9ac	WB, ELISA, IF, ChIP, DB, ChIP-seq	Hu, Ms, Others	bs-53092R
H3K9me1	WB, ELISA, IF, ChIP, DB	Hu	bs-53043R
H3K9me2	WB, ELISA, IF, ChIP	Hu	bsm-53016M
H3K9me3	WB, ELISA, IF, ChIP, DB	Hu, Ms, Zebrafish	bs-53114R
H3S10p	WB, ELISA, IF, ChIP, DB	Hu	bs-53135R
H4 pan	WB, ELISA, ICC, ChIP	Hu	bs-53138R

TARGET	APPLICATION	SPECIES	CATALOG
H4K20me1	WB, ELISA, ICC, ChIP, DB	Hu	bs-53104R
H4K20me3	WB, ELISA, IF, ChIP, DB, ChIP-seq	Hu, Ms	bs-53115R
H4K5ac	WB, ELISA, ICC, ChIP, DB	Hu, Ms	bs-53099R
H4K8ac	WB, ELISA, IF, ChIP, DB	Hu, Ms	bs-53133R
HDAC1	WB, ELISA, ICC, ChIP	Hu, Ms	bs-53113R
HDAC2	WB, ICC, ChIP	Hu	bsm-53026M
HEMK2	WB, IHC-P	Hu, Ms, Rt	bs-15453R
Histone H3	WB, FCM, IHC-P	Hu, Ms, Rt	bs-0349R
HMG2L1	ELISA	Hu	bs-53079R
HP1 alpha	WB, IF	Hu	bs-53123R
JMJD2a	WB, ELISA	Hu	bs-53136R
L3MBTL1	WB, IP	Hu	bs-53097R
MBD4	WB, ELISA	Hu	bs-53050R
MeCP2	WB, ELISA, ChIP	Hu	bs-53112R
Med26	WB	Hu	bs-53124R
MGMT	WB, IHC-P	Hu, Ms, Rt	bs-1002R
MI4	ELISA	Ms	bs-53060R
MYH11	WB, ELISA, ChIP, ChIP-seq	Hu	bs-53091R
ORC2	WB	Hu	bsm-53025M
p53	WB, ELISA, ChIP, ChIP-seq	Hu	bs-53127R
PAD14	WB, ELISA	Hu	bs-53047R
PAPD5	WB	Hu	bs-53073R
PIWIL1	WB, IHC-P	Hu, Ms, Rt	bs-0665R
PML	WB, ELISA	Hu	bs-53134R
Pol II	WB, ELISA, ICC, ChIP	Hu	bsm-53004M
RbAp 46/48	WB	Hu	bsm-53000M
SirT1	WB	Hu	bsm-53011M
Ski3	WB, IF	Hu	bs-53094R
TAF1	WB, IHC-P	Hu, Ms, Rt	bs-53045R
TBP	WB, ChIP, ChIP-seq	Hu	bsm-53003M
TET2	WB, IP	Hu, Ms	bsm-53017M
TIP-5	WB, ChIP	Hu, Ms	bs-53052R
WDR5	WB, IF, ChIP, ChIP-seq	Hu	bs-53101R
ZBED6	ELISA	Hu	bs-53081R
ZBTB4	ELISA	Hu	bs-53077R

WB - Western Blot | DB - Dot Blot | IHC-P - Immunohistochemistry Paraffin | IHC-F - Immunohistochemistry Frozen | ICC - Immunocytochemistry | IF - Immunofluorescence | ELISA - Enzyme Linked Immunosorbent Assay | FCM - Flow Cytometry | ChIP - Chromatin Immunoprecipitation | ChIP-seq - Chromatin Immunoprecipitation Sequencing  
Bv - Bovine | Ch - Chicken | Dg - Dog | Gt - Goat | Hu - Human | Ms - Mouse | Pg - Pig | Rt - Rat | Sh - Sheep