

# INHIBITOR COCKTAILS

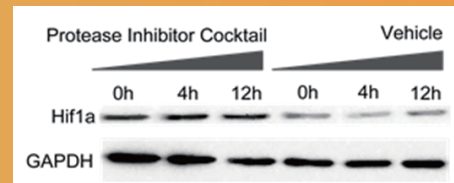
APExBIO provides a wide range of individual protease/phosphatase inhibitors and protease/phosphatase inhibitor cocktails to protect the integrity of proteins from multiple proteases/phosphatases for different applications.

## Features

- Optimized to maintain protein function during cell lysis
- Specific compositions optimized for particular applications
- Inhibits proteases/phosphatases with broad spectrum
- Inhibits proteases/phosphatases in almost any tissue or cell

Protect Your Proteins  
Improve Your Results

## Validation Data



Protease Inhibitor Cocktail (K1007) was added at 1:100 (v/v) dilution to 293T cell lysates. Hif1α protein was detected using Rabbit-anti-Hif1α antibody and HRP conjugated anti-rabbit-antibody.

## Protease Inhibitor Cocktail

Ready To Use

K1007	Protease Inhibitor Cocktail (EDTA-Free, 100X in DMSO)	For use with mammalian cell and tissue extracts
K1008	Protease Inhibitor Cocktail (EDTA-Free, 200X in DMSO)	For use in tissue culture media
K1009	Protease Inhibitor Cocktail (EDTA-Free, 100X in DMSO)	For use with yeast and fungal extracts
K1010	Protease Inhibitor Cocktail (EDTA-Free, 100X in DMSO)	For use in purification of His-tag protein
K1011	Protease Inhibitor Cocktail (EDTA-Free, 100X in DMSO)	For plant cell and tissue extracts

## Phosphatase Inhibitor Cocktail

Lower Cost

K1012	Phosphatase Inhibitor Cocktail 1 (100X in DMSO)	Inhibits the L-isozymes of alkaline phosphatases as well as serine/threonine protein phosphatases
K1013	Phosphatase Inhibitor Cocktail 2 (100X in ddH <sub>2</sub> O)	Inhibits tyrosine phosphatases, acid phosphatases and alkaline phosphatases
K1014	Phosphatase Inhibitor Cocktail 3 (100X in DMSO)	Inhibits the L-isozymes of alkaline phosphatases as well as serine/threonine protein phosphatases