

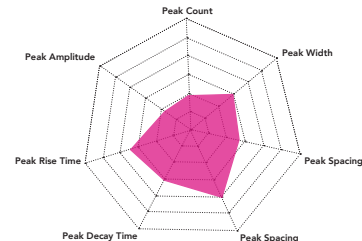
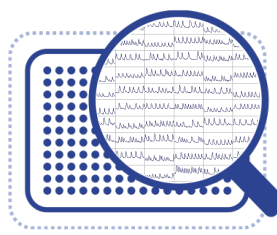
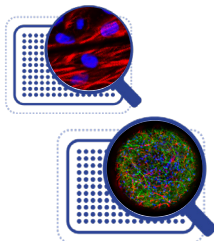
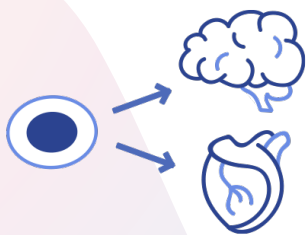
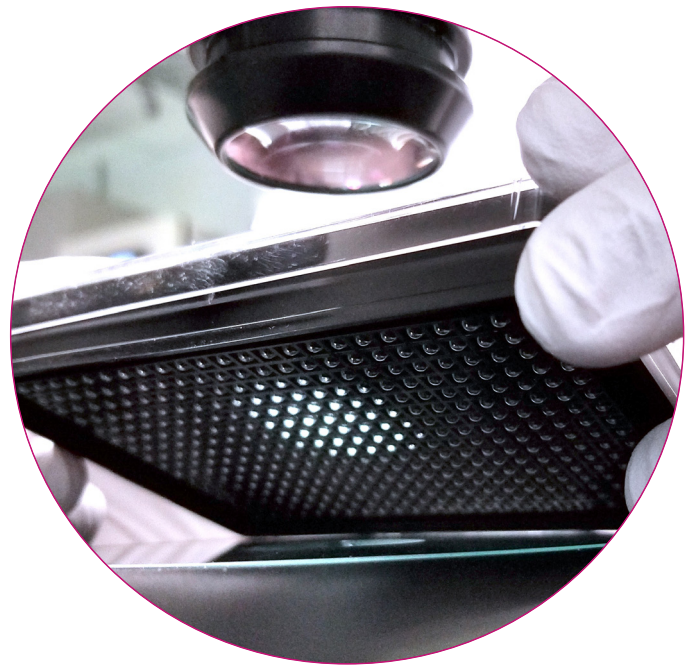
StemoniX

Discovery as a Service

Outsource Your Discovery

From cells to assays to data, the StemoniX® Discovery as a Service (DaaS) team harnesses the biology of human induced pluripotent stem cells (iPSCs), the physiology of complex culture systems, and the power of high-throughput screening to give your drug discovery programs an advantage.

- We **develop** custom human iPSC-derived neural and cardiac tissues from healthy and disease sources for superior clinical translation
- We **model** native cellular environments with physiologically relevant behavior to provide you with actionable data
- We **screen** chemical libraries of all sizes using standard and custom assays to advance your discovery and toxicology programs
- We **analyze** your data and provide detailed multiparametric evaluation for informed decision making



Develop

Clinically relevant tissues...

Model

...with native structure and biology...

Screen

...in high-throughput phenotypic assays for new discoveries...

Analyze

...with multiparametric analytics to produce translatable data.

Partner with StemoniX to accelerate your discovery program!

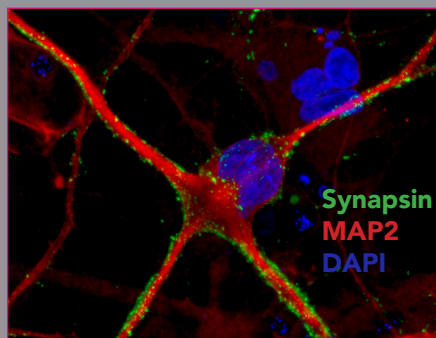
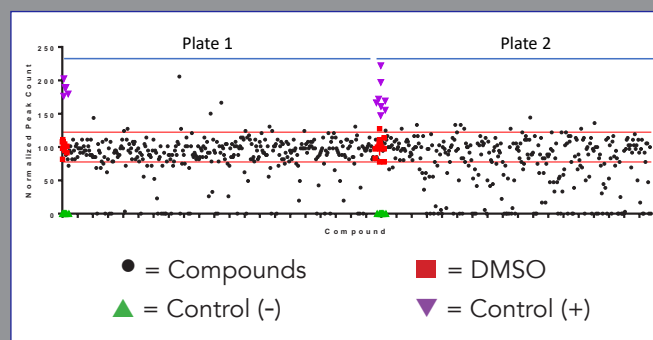
StemoniX Discovery as a Service Advantage

With more than 40 years of collective experience in human stem cell biology, assay development, and screening, the StemoniX DaaS team leverages our neural (microBrain®) and cardiac (microHeart®) iPSC-based platforms using high-throughput screens and customized assays. We use relevant cellular physiology to identify safe and effective compounds for your discovery programs.

Applications

- Primary phenotypic screens
- Confirmatory dose responses
- Toxicity testing
- MOA identification
- Gene and protein expression
- Custom iPSC disease model and assay development

A wide assay window (▽-△) enables accurate identification of novel and effective hits



High content imaging reveals drug-induced changes in protein expression and localization in relevant tissue cells

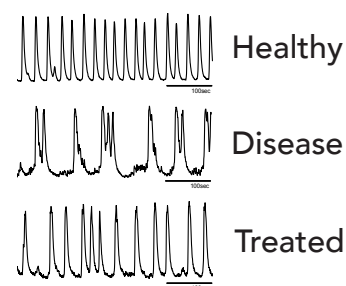
Benefits

- Extensive expertise
- Biologically relevant platforms
- High-throughput
- Rapid turnaround
- Predictive assays and translatable data

Establish a competitive edge

Use our state-of-the-art resources and models with accurate and reliable data to immediately maximize your success and shorten your time to market. Outsource your discovery with the experts at StemoniX.

Custom iPSC-disease models enable discovery of novel compounds and therapeutic treatments



Let our service team accelerate your discoveries today!

DaaS@stemonix.com

855-783-6669

©2019 StemoniX. The trademarks used herein are the property of StemoniX or their respective owners.
microBrain and microHeart are patent pending. Specifications subject to change without notice.



DaaS Webpage

EXT2007-01