

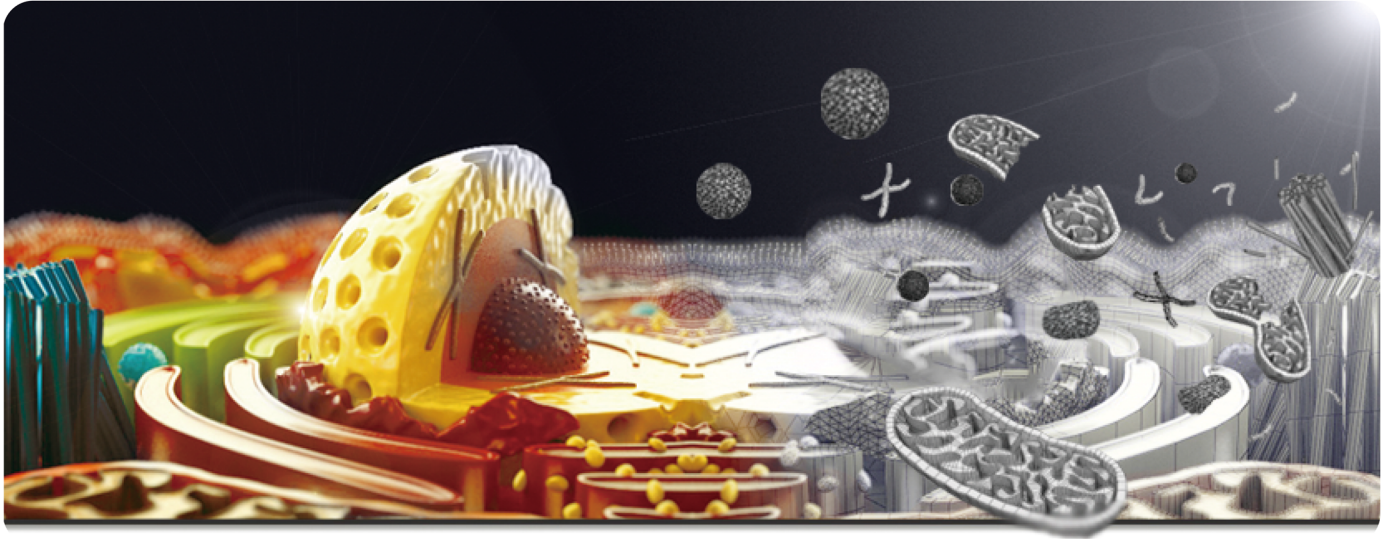
# Apoptosis

www.genetex.com

Your Expertise

Our Antibodies

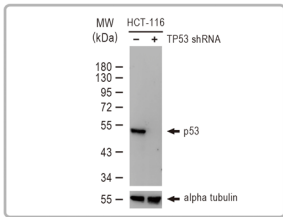
Accelerated Discovery



## Highlighted Products

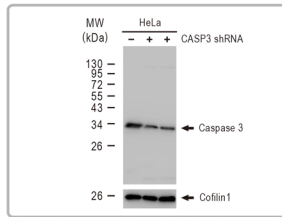
 Citation Support

 KO/KD Validated



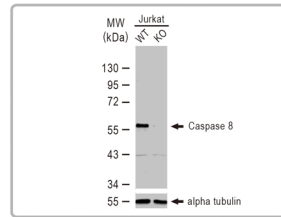
**p53 antibody [D01] (GTX70214)**  
WB analysis of p53 protein in HCT-116 cells treated w/o shRNA.



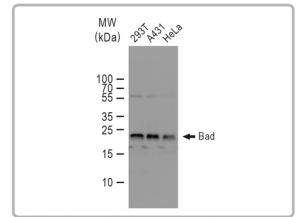
**Caspase 3 antibody (GTX110543)**  
WB analysis of Caspase 3 protein in HeLa treated w/o shRNA.



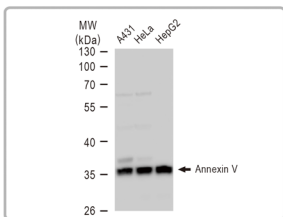
**Caspase 8 antibody (GTX110723)**  
WB analysis of Caspase 8 protein in mock control or KO HeLa cells.



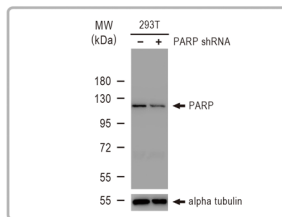
**Bad antibody (GTX130108)**  
WB analysis of Bad protein in various cell lines.



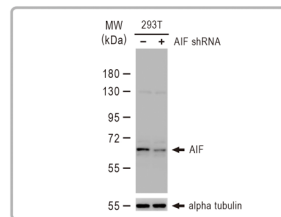
**Annexin V antibody (GTX103250)**  
WB analysis of Annexin V protein in the indicated cell lines.



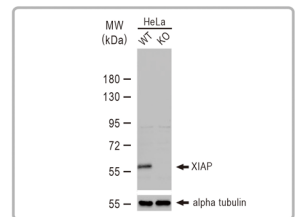
**PARP antibody (GTX100573)**  
analysis of PARP protein in 293T cells treated w/o shRNA.



**AIF antibody [N1C1] (GTX113306)**  
WB analysis of AIF protein in 293T cells treated w/o shRNA.















**XIAP antibody [N1C1] (GTX113130)**  
WB analysis of XIAP protein in mock control or KO HeLa cells.

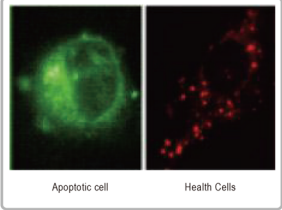
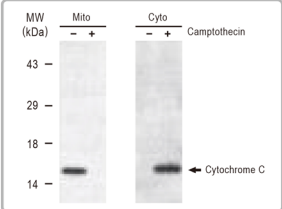

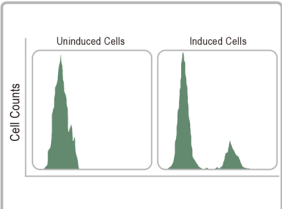
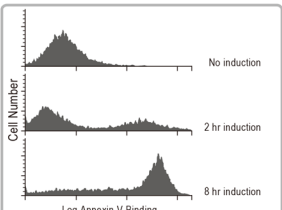
 

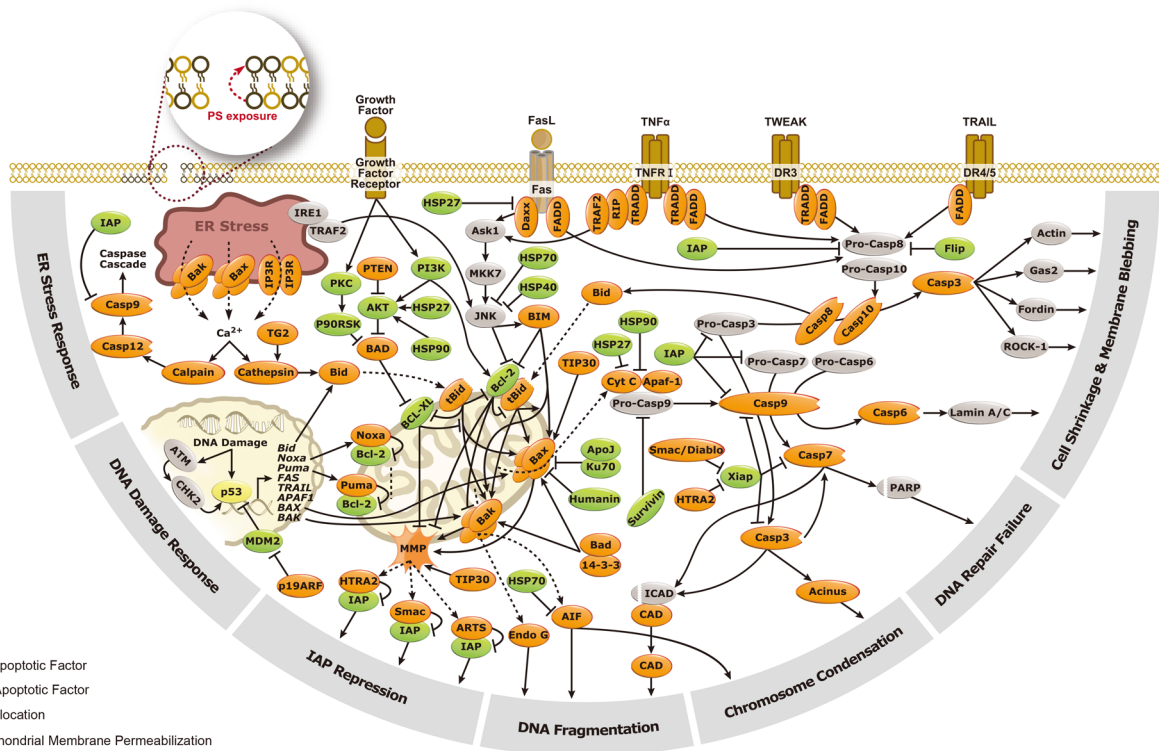
## Representative Publications

 Citation Support

 KO/KD Validated

Cat. No.	Product Name	Reactivity	Application	Publication
  GTX70103	ATM antibody [2C1]	WB	Mouse	<i>Cancer Cell</i> . 2016 Aug 8;30(2):337-48.
  GTX70214	p53 antibody [D01]	ICC/IF	Human	<i>Cancer Res</i> . 2016 Nov 1;76(21):6311-6319.
  GTX100573	PARP antibody	ChIP assay	Human	<i>PLoS Genet</i> . 2016 Sep 14;12(9):e1006292.
 GTX628789	Histone H2A.XS139ph antibody	WB	Mouse	<i>Cancer Res</i> . 2016 Jul 15;76(14):4183-91.
  GTX110723	Caspase 8 antibody	WB	Human	<i>Cell Death Discov</i> . 2016 Oct 3;2:16065.
 GTX100064	Bcl-2 antibody [N1N2], N-term	WB	Mouse	<i>Sci Rep</i> . 2016 Jun 14;6:27945.
  GTX130108	Bad antibody	WB	Human	<i>Neuropharmacology</i> . 2016 Nov;110(Pt A):362-75.

Cat. No.	Product Name	Features	
GTX85581	MitoLume Mitochondrial Apoptosis Detection Kit	<ul style="list-style-type: none"> <li>* Live-cell imaging allows for real-time observation.</li> <li>* Simple: detects the apoptotic process based on intracellular re-localization and spectrum shift of fluorescent signals.</li> <li>* Fast: only takes 30min.</li> </ul>	
<b>Cited</b> GTX85531	Cytochrome C Release Assay Kit	<ul style="list-style-type: none"> <li>* Quantitative assay by Western Blot</li> <li>* Simple: No ultracentrifugation is required</li> <li>* Fast: only takes 3 hours.</li> </ul>	
GTX85582	easyTUNEL DNA Fragmentation Assay Kit	<ul style="list-style-type: none"> <li>* Conveniently detecting DNA fragmentation</li> <li>* Simple: One-step labelling of apoptotic cells</li> <li>* Fast: takes less than 1 hour</li> </ul>	
GTX85584	proTUNEL-Red DNA Fragmentation Assay Kit	<ul style="list-style-type: none"> <li>* Optimized for Flow cytometry</li> <li>* Sensitive: Utilize Br-dUTP, which incorporates into DNA strand more readily than any other reagents.</li> <li>* Fast: only takes 3 hours.</li> </ul>	
GTX85587 (Biotin) GTX85588 (EGFP) GTX85591 (FITC) GTX85590 (Cy3) GTX85586 (PE) GTX85589 (Cy5)	Annexin V Apoptosis Kit	<ul style="list-style-type: none"> <li>* Apoptosis assay with Annexin V-conjugates</li> <li>* Simple: one-step staining procedure</li> <li>* Fast: takes only 10 min</li> <li>* Detection can be analyzed by flow cytometry or by fluorescence microscopy.</li> </ul>	



Cat. No.	Product Name	Host & Clonality	Reactivity	Application
GTX113306	AIF antibody [N1C1]	Rb pAb	Hu, Ms, Rat	ICC/IF, IHC-P, WB
GTX102399	AIF antibody [N1N2], N-term	Rb pAb	Hu	ICC/IF, IHC-P, WB
GTX113329	Annexin A1 antibody	Rb pAb	Hu, Ms	ICC/IF, IHC-P, WB
GTX103250	Annexin V antibody	Rb pAb	Hu, Ms, Rat	ICC/IF, IHC-P, WB
GTX22000	APAF1 antibody	Rb pAb	Hu, Ms, Rat	IHC-P, WB
GTX15178	APAF1 antibody (ready-to-use)	Rb pAb	Hu, Ms, Rat	IHC, IHC-P
GTX107199	ART5 antibody [N1C3]	Rb pAb	Hu, Ms	IHC-P, WB
GTX107921	ASK1 antibody [C2C3-2], C-term	Rb pAb	Hu, Ms	IHC-P, WB
GTX32370	Bad (phospho Ser112) antibody	Rb pAb	Hu	IHC-P, WB
GTX50136	Bad (phospho Ser136) antibody	Rb pAb	Hu, Ms, Rat	IHC-P, IP, WB
GTX130108	Bad antibody	Rb pAb	Hu	WB
GTX23191	Bax antibody [5B7]	Ms mAb	Ms	ICC/IF, WB
GTX109683	Bax antibody [N1N2], N-term	Rb pAb	Hu, Rat	ICC/IF, IHC-P, IP, WB
GTX100064	Bcl-2 antibody [N1N2], N-term	Rb pAb	Hu, Ms, Rat	IHC-P, WB
GTX105661	Bcl-X antibody	Rb pAb	Hu, Ms, Rat	ICC/IF, IHC-P, IP, WB
GTX46035	Bcl-X antibody [7B2.5] (PE)	Ms mAb	Hu, Ms	FACS, IP, WB
GTX84834	Bcl-XL antibody [4A9]	Ms mAb	Hu	ICC/IF, WB
GTX124266	Bcl-XS antibody	Rb pAb	Hu, Rat	IHC-P, WB
GTX110568	Bid antibody [N1C3-2]	Rb pAb	Hu, Ms, Rat	ICC/IF, IHC-P, IP, WB
GTX104636	Bif-1 antibody [C2C3], C-term	Rb pAb	Hu, Ms	ICC/IF, IHC-P, WB
GTX50308	Bim (phospho Ser69) antibody	Rb pAb	Hu, Ms, Rat	ICC/IF, IHC-P
GTX50597	Bim antibody	Rb pAb	Hu, Ms, Rat	IHC-P, WB
GTX102350	Calpain 1 antibody	Rb pAb	Hu	FACS, ICC/IF, IHC-P, WB
GTX102340	Calpain 1 antibody [N3C2], Internal	Rb pAb	Hu, Ms	ICC/IF, IHC-P, IP, WB
GTX102499	Calpain 2 antibody [N2C1], Internal	Rb pAb	Hu, Ms	FACS, ICC/IF, IHC-P, WB
GTX111630	Caspase 1 antibody	Rb pAb	Hu	ICC/IF, IHC-P, WB
GTX101322	Caspase 1 antibody [N1N3]	Rb pAb	Hu	ICC/IF, IHC-P, WB
GTX123675	Caspase 1 p10 subunit antibody	Rb pAb	Hu, Ms	IHC-P
GTX59704	Caspase 10 antibody	Rb pAb	Hu, Ms, Rat	WB
GTX113148	Caspase 10 antibody	Rb pAb	Hu	ICC/IF, IHC-P, WB
GTX59705	Caspase 11 antibody	Rb pAb	Ms, Rat	WB
GTX10454	Caspase 11 antibody [17D9]	Rat mAb	Ms, Rat	IHC-Fr, IP, WB
GTX59923	Caspase 12 antibody	Rb pAb	Ms, Rat	WB
GTX74429	Caspase 12 antibody, N-term	Rb pAb	Hu, Ms, Rat	IHC-P, WB
GTX86956	Caspase 2 (cleaved Gly170) antibody	Rb pAb	Hu	ELISA, WB
GTX86954	Caspase 2 (cleaved Thr325) antibody	Rb pAb	Hu, Ms, Rat	ELISA, WB
GTX110542	Caspase 2 antibody	Rb pAb	Hu	WB
GTX82535	Caspase 2 antibody, Internal	Rb pAb	Hu	FACS, IHC-P, WB
GTX22302	Caspase 3 (active) antibody	Rb pAb	Hu, Ms, Rat, Frt	ICC/IF, IHC, IHC-Fr, IHC-P, WB
GTX86952	Caspase 3 (cleaved Asp175) antibody	Rb pAb	Hu, Ms, Rat	ELISA, IHC-P, WB
GTX110543	Caspase 3 antibody	Rb pAb	Hu, Ms, Rat	ICC/IF, IHC-Fr, IHC-P, IP, WB
GTX73090	Caspase 3 antibody	Rb pAb	Hu, Ms, Rat, Rb	IHC, IHC-P, IP, WB
GTX86890	Caspase 4 (cleaved Gln81) antibody	Rb pAb	Hu	ELISA, WB
GTX113639	Caspase 4 antibody	Rb pAb	Hu	IHC-P, WB
GTX86923	Caspase 5 (cleaved Asp121) antibody	Rb pAb	Hu	ELISA, WB
GTX86899	Caspase 5 (cleaved Ser331) antibody	Rb pAb	Hu	ELISA, WB
GTX59707	Caspase 5 antibody	Rb pAb	Hu, Ms, Mk, Rat, Hm, Bov	WB
GTX59553	Caspase 6 (active) antibody	Rb pAb	Hu, Ms, Rat	WB
GTX59708	Caspase 6 antibody	Rb pAb	Hu, Ms, Rat	IHC, WB
GTX22323	Caspase 7 (active) antibody	Rb pAb	Hu, Ms, Rat	ICC/IF, IHC, IP, WB
GTX102337	Caspase 7 antibody [N1C3]	Rb pAb	Hu	WB
GTX123679	Caspase 7 p11 subunit antibody	Rb pAb	Hu	IHC-P, WB
GTX59607	Caspase 8 (active) antibody	Rb pAb	Ms, Rat	WB
GTX110723	Caspase 8 antibody	Rb pAb	Hu, Ms, Rat	ICC/IF, IHC-P, WB
GTX100905	Caspase 8 antibody [N1C1]	Rb pAb	Hu, Hrs	ICC/IF, IHC-P, WB
GTX22324	Caspase 9 (active) antibody	Rb pAb	Hu	ICC/IF, IP, WB
GTX86945	Caspase 9 (cleaved Asp315) antibody	Rb pAb	Hu	ELISA, IHC, IHC-P, WB
GTX86928	Caspase 9 (cleaved Asp330) antibody	Rb pAb	Hu	ELISA, IHC, IHC-P, WB
GTX86912	Caspase 9 (cleaved Asp353) antibody	Rb pAb	Ms, Rat	ELISA, IHC, IHC-P, WB
GTX112888	Caspase 9 antibody [N2C3]	Rb pAb	Hu, Rat	IHC-P, IP, WB
GTX103095	Cathepsin F antibody [N3C3]	Rb pAb	Hu	WB
GTX105671	Cathepsin O antibody [N1C3]	Rb pAb	Hu	ICC/IF, IHC-P, WB
GTX114350	Cathepsin S antibody	Rb pAb	Hu	ICC/IF, IHC-P, WB
GTX110087	cIAP1 antibody	Rb pAb	Hu, Ms, Rat	IHC-P, WB
GTX629402	cIAP1 antibody [GT422]	Ms mAb	Hu	WB

Cat. No.	Product Name	Host & Clonality	Reactivity	Application
○ GTX113128	clAP2 antibody [C1C3]	Rb pAb	Hu	IHC-P, WB
GTX101236	Clusterin antibody	Rb pAb	Hu, Ms, Rat	IHC-P, WB
○ GTX108585	Cytochrome C antibody	Rb pAb	Hu, Ms, Rat	IHC-Fr, IHC-P, WB
GTX59718	Cytochrome C antibody	Rb pAb	Hu, Ms, Chk, Dog, Rat, Bov	IP, WB
○ GTX13575	Cytochrome C antibody [7H8.2C12]	Ms mAb	Hu, Ms, Dm, Pig, Rat, Hm, Hrs, Pgn	WB
○ GTX105624	Cytokeratin 18 antibody [N2C2], Internal	Rb pAb	Hu, Ms	ICC/IF, IHC-P, IP, WB
GTX113864	DAP3 antibody [N1C2-2]	Rb pAb	Hu	ICC/IF, IHC-P, WB
GTX83312	Daxx antibody [7A11]	Ms mAb	Hu	ELISA, FACS, ICC/IF, WB
GTX112908	Daxx antibody [N1N3]	Rb pAb	Hu	ICC/IF, IHC-P, WB
○ GTX23930	Diablo antibody	Rb pAb	Hu, Ms, Rat	IHC-P, WB
GTX30249	Diablo antibody [78-1-118]	Ms mAb	Hu, Ms, Rat	WB
GTX106746	Diablo antibody [N1C3]	Rb pAb	Hu, Ms	IHC-P, WB
GTX113108	Diablo antibody [N1C3-3]	Rb pAb	Hu	IHC-P, WB
GTX10522	EndoG antibody	Rb pAb	Hu, Ms, Rat	IHC-P, WB
GTX84986	EndoG antibody [7F2D7]	Ms mAb	Hu, Ms, Rat	ELISA, WB
○ GTX114385	EndoG antibody [N1C3]	Rb pAb	Hu, Ms	ICC/IF, WB
○ GTX100612	FADD antibody	Rb pAb	Hu	WB
○ GTX116024	Fas antibody [N3C2], Internal	Rat mAb	Hu	FACS, ICC/IF, WB
○ GTX100644	Fas Ligand antibody [N2C1], Internal	Rb pAb	Hu	WB
○ GTX101145	HSP27 antibody	Rb pAb	Hu, Ms, Rat	FACS, ICC/IF, IHC-P, IP, WB
○ GTX112964	HSP27 antibody	Rb pAb	Hu	ICC/IF, IHC-P, IP, WB
GTX102049	Hsp40 antibody [N1C1]	Rb pAb	Hu	WB
○ GTX109753	Hsp90 alpha antibody	Rb pAb	Hu, Ms, Rat	ICC/IF, IHC-P, IP, WB
○ GTX101448	HSP90 beta antibody	Rb pAb	Hu, Ms, Rat	ICC/IF, IHC-P, IP, WB, ELISA-Ag
○ GTX111088	HSPA1A antibody	Rb pAb	Hu, Ms, Rat	ICC/IF, IHC-P, IP, WB
GTX106148	HSPA1B antibody	Rb pAb	Hu, Rat	ICC/IF, IHC-P, WB
GTX110703	HTRA2 antibody	Rb pAb	Hu	IHC-P, WB
GTX86959	ICAD (cleaved Asp224) antibody	Rb pAb	Hu	ELISA, IHC, IHC-P
○ GTX113416	ICAD antibody [N2C3]	Rb pAb	Hu	WB
○ GTX63722	IRE1 alpha (phospho Ser724) antibody [EPR5253]	Rb mAb	Hu	WB
○ GTX113682	IRE1 alpha antibody [N1N2], N-term	Rb pAb	Hu	IP, WB
GTX50868	JNK1/2/3 (phospho Thr183/Tyr185) antibody	Rb pAb	Hu, Ms, Rat	ICC/IF, WB
GTX86913	Lamin A (cleaved Asp230) antibody	Rb pAb	Hu, Ms, Rat	ELISA, IHC, IHC-P, WB
○ GTX101126	Lamin A + C antibody	Rb pAb	Hu, Ms	ICC/IF, IHC-P, IP, WB
○ GTX101127	Lamin A + C antibody	Rb pAb	Hu, Ms, Rat	ICC/IF, IHC-P, IP, WB
○ GTX109173	LITAF antibody [N1C3]	Rb pAb	Hu	IHC-P, IP, WB, ChIP-seq
GTX85521	Noxa antibody	Rb pAb	Hu, Ms, Rat	ELISA, ICC/IF, IHC-P, WB
○ GTX70220	Nuclear Matrix Protein p84 antibody [5E10]	Ms mAb	Hu, Ms, Mk, Rat, Hm	ICC/IF, IHC, IP, WB, ChIP assay
○ GTX20080	p19ARF antibody	Rb pAb	Hu, Ms	ELISA, ICC/IF, IHC-P, IP, WB, ChIP assay
○ GTX102965	p53 antibody	Rb pAb	Hu	ICC/IF, IHC-P, IP, WB, ChIP assay
GTX70214	p53 antibody [DoI]	Ms mAb	Hu	ELISA, FACS, ICC/IF, IHC-Fr, IHC-P, IP, WB
○ GTX86921	PARP (cleaved Asp214) antibody	Rb pAb	Hu, Ms	ELISA, WB
○ GTX100573	PARP antibody	Rb pAb	Hu, Ms	ICC/IF, IP, WB, ChIP assay
○ GTX628836	PARP antibody [GT6212]	Ms mAb	Hu	IHC-P, WB
○ GTX112864	PARP antibody [N2C1], Internal	Rb pAb	Hu, Ms, Rat	ICC/IF, IHC-P, IP, WB, ChIP assay
○ GTX29643	PUMA antibody	Rb pAb	Hu, Ms	ICC/IF, WB
GTX109675	PUMA antibody [C2C3], C-term	Rb pAb	Hu	IHC-P, IP, WB
○ GTX59604	ROCK1 (cleaved) antibody [12M03]	Ms mAb	Hu, Ms	WB
○ GTX113266	ROCK1 antibody [N1N2], N-term	Rb pAb	Hu, Ms, Rat	ICC/IF, IHC-P, IP, WB
○ GTX100052	Survivin antibody	Rb pAb	Hu	ICC/IF, IHC-P, IP, WB
○ GTX100441	Survivin antibody	Rb pAb	Hu, Ms	ICC/IF, IHC-P, IP, WB
GTX100608	TID1 antibody	Rb pAb	Hu	ICC/IF, IHC-P, WB
GTX100119	TIP30 antibody	Rb pAb	Hu, Ms	ICC/IF, IHC-P, IP, WB
○ GTX111138	TRAF2 antibody	Rb pAb	Hu	ICC/IF, IHC-P, WB
GTX113043	TRAIL antibody	Rb pAb	Hu	WB
○ GTX111702	Transglutaminase 2 antibody [N3C3]	Rb pAb	Hu, Ms	ICC/IF, IHC-P, WB
○ GTX113130	XIAP antibody [N1C1]	Rb pAb	Hu, Ms	ICC/IF, IHC-P, WB