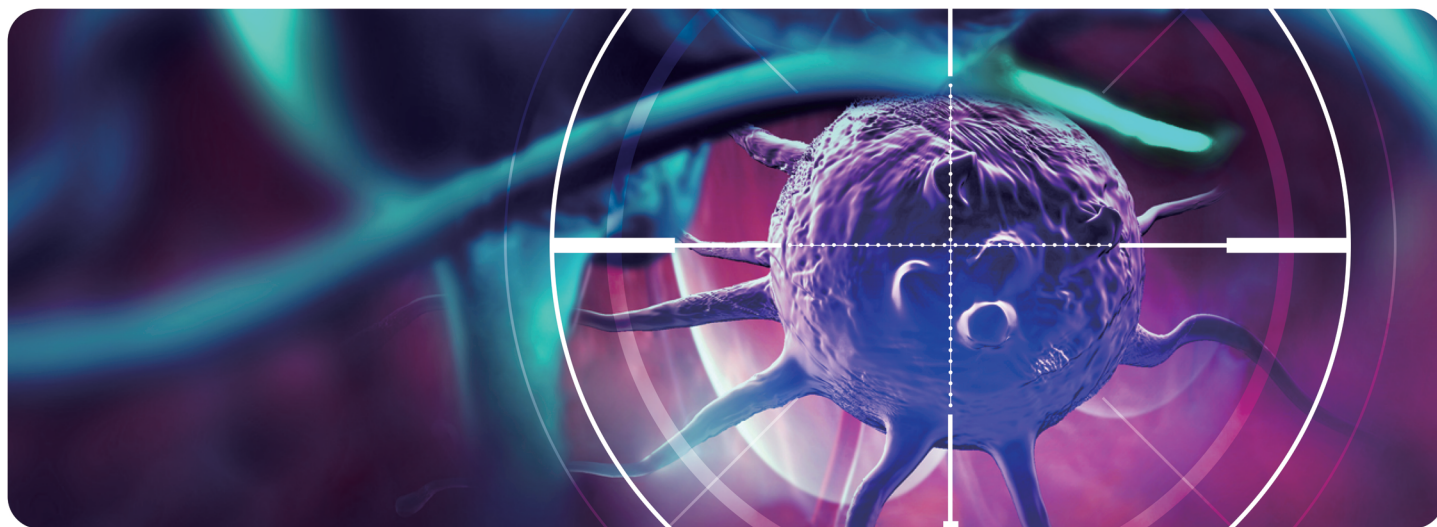


Cancer Stem Cells

- Your Expertise
- Our Antibodies
- Accelerated Discovery

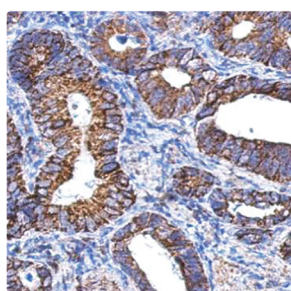
www.genetex.com




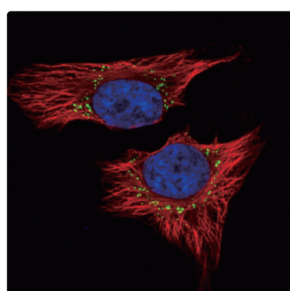
Breast	Colon	Glioma	Liver	Lung	Melanoma	Ovarian	Pancreatic	Prostate
ALDH1 CD24 CD44 CD90 CD133 α_6 -integrin EpCAM p63	ABCB5 ALDH1 CD24 CD26 CD29 CD44 CD133 CD166 EpCAM LGR5	A2B5 CD15 CD90 CD133 α_6 -integrin Nestin	ALDH1 CD13 CD24 CD44 CD90 CD133 EpCAM ICAM1 Sall4	ABCG2 ALDH1 CD90 CD117 CD133	ABCB5 ALDH1 CD20 CD34 CD117 CD133 CD166 CD271 Nestin	ALDH1 CD24 CD44 CD117 CD133	ABCG2 ALDH1 CD24 CD44 CD133 c-Met CXCR4 Nestin EpCAM	A2B1 ALDH1 CD24 CD44 CD133 CD166 $\alpha_2\beta_1$ -integrin α_6 -integrin


Selected Cancer Stem Cell Markers

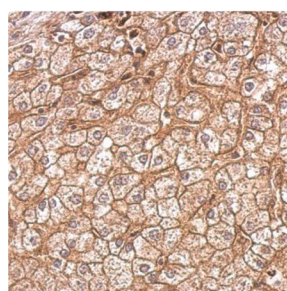
 Citation Support  KO/KD Validated



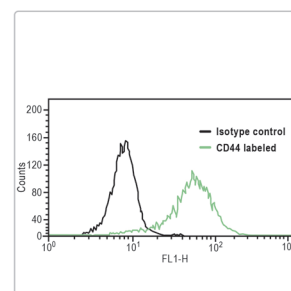
ALDH1A1 antibody (GTX123973) 




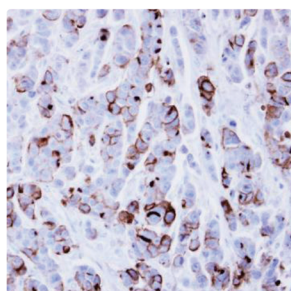
c-Met antibody [C3], C-term (GTX100637)  



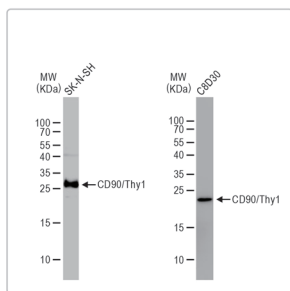
Integrin beta 1 / CD29 antibody (GTX128839) 




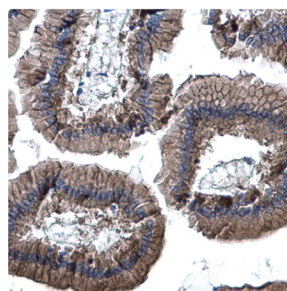
CD44 antibody [GT462] (GTX628895) 




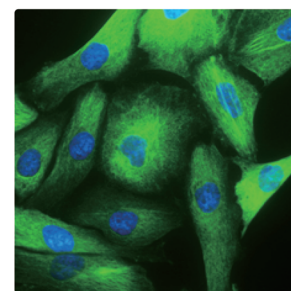
CD54 / ICAM1 antibody [N1C2] (GTX100450) 




CD90/Thy1 antibody (GTX130072) 



EpCAM antibody [N3C3] (GTX113091) 



Nestin antibody [GT623] (GTX630201) 

Cat. No.	Product Name	Host & Clonality	Reactivity	Application
GTX14538	A2B5 antibody [105]	Ms mAB	Hu, Ms, Rat	ICC/IF
GTX60661	ABCB5 antibody [5H3C6]	Ms mAB	Hu	ELISA, FACS, ICC/IF, IHC-P, WB
 GTX100437	ABCG2 antibody	Rb pAB	Hu, Ms	IHC-P, WB
 GTX23380	ABCG2 antibody [BXP-21]	Ms mAB	Hu	FACS, ICC/IF, IHC-Fr, IHC-P, WB
 GTX123973	ALDH1A1 antibody	Rb pAB	Hu, Ms, Rat	ICC/IF, IHC-P, WB
GTX115148	ALDH1A2 antibody [C1C3]	Rb pAB	Hu, Ms, Rat	IHC-P, WB
 GTX110784	ALDH1A3 antibody [N2C2], Internal	Rb pAB	Hu	ICC/IF, WB, IHC-P
GTX32525	CD117 / c-Kit antibody	Rb pAB	Hu	FACS, ICC/IF, IP, WB
 GTX102788	CD13 antibody	Rb pAB	Hu	IHC-P, WB
 GTX42441	CD13 antibody [WM15] (Low endotoxin, azide free)	Ms mAB	Hu, RMK	ELISA, FACS, IHC-Fr, IP, Functional Assay
 GTX100567	CD133 antibody [C1C2], Internal	Rb pAB	Hu	FACS, IHC-P, WB
GTX130098	CD166 antibody	Rb pAB	Hu, Ms, Rat	WB
GTX60782	CD166 antibody [8E12C7]	Ms mAB	Hu	ELISA, FACS, ICC/IF, IHC-P, WB
GTX100209	CD20 antibody [C2C3], C-term	Rb pAB	Hu	ICC/IF, WB
 GTX74945	CD24 antibody [SN3]	Ms mAB	Hu, Chmp	FACS, IHC-Fr
 GTX84602	CD26 antibody [11D7]	Ms mAB	Hu	ELISA, FACS, ICC/IF, IHC, IHC-P, WB
GTX102262	CD271 / p75 NGF Receptor antibody	Rb pAB	Hu, Ms, Rat	ICC/IF, IHC-Fr, IHC-P, WB
  GTX128839	CD29 / Integrin beta 1 antibody	Rb pAB	Hu, Ms, Rat	IHC-P, IP, WB
 GTX112971	CD29 / Integrin beta 1 antibody	Rb pAB	Hu	ICC/IF, IHC-P, WB
 GTX28158	CD34 antibody [MEC14.7]	RatmAB	Hu, Ms, Rb	ELISA, FACS, ICC/IF, IHC, IHC-Fr, IHC-P, IP, WB
  GTX102111	CD44 antibody	Rb pAB	Hu, Rb	ICC/IF, IHC, IHC-Fr, IHC-P, WB
  GTX628895	CD44 antibody [GT462]	Ms mAB	Hu	FACS, IHC-P, WB
 GTX75045	CD49f / Integrin alpha 6 antibody [450-30A] (FITC)	Ms mAB	Hu, Rb	FACS
  GTX100565	CD49f / Integrin alpha 6 antibody [N3C2], Internal	Rb pAB	Hu, Ms, Rat	ICC/IF, WB
 GTX78387	CD54 / ICAM1 antibody [1H4]	Ms mAB	Hu	FACS, ICC/IF, IHC-Fr, IHC-P, WB
 GTX100450	CD54 / ICAM1 antibody [N1C2]	Rb pAB	Hu	IHC-P, WB
 GTX130072	CD90 antibody	Rb pAB	Hu, Ms	IHC-Fr, WB
  GTX100637	c-Met antibody [C3], C-term	Rb pAB	Hu	ICC/IF, IP, WB
 GTX631992	c-Met antibody [GT556]	Ms mAB	Hu	IHC-P, IP, WB
 GTX22074	CXCR4 antibody	Rb pAB	Hu	FACS, ICC/IF, IHC-Fr, IHC-P, IP, WB
 GTX113091	EpCAM antibody [N3C3]	Rb pAB	Hu, Ms	IHC-P, WB
  GTX127928	hnRNP A2B1 antibody	Rb pAB	Hu, Ms, Rat	ICC/IF, IHC-P, IP, WB
GTX133111	Nestin antibody	Rb pAB	Hu, Ms, Rat	WB
 GTX630201	Nestin antibody [GT623]	Ms mAB	Hu, Ms	ICC/IF, WB, IHC-P
 GTX633818	p63 antibody [GT1179]	Rb mAB	Hu	WB
  GTX102425	p63 antibody [N2C1], Internal	Rb pAB	Hu, Ms, Rat	ICC/IF, IHC-P, IP, WB, PLA
 GTX109983	SALL4 antibody [C1C2], Internal	Rb pAB	Hu, Ms, Pig	ICC/IF, IHC-P, WB