

Cell Cycle

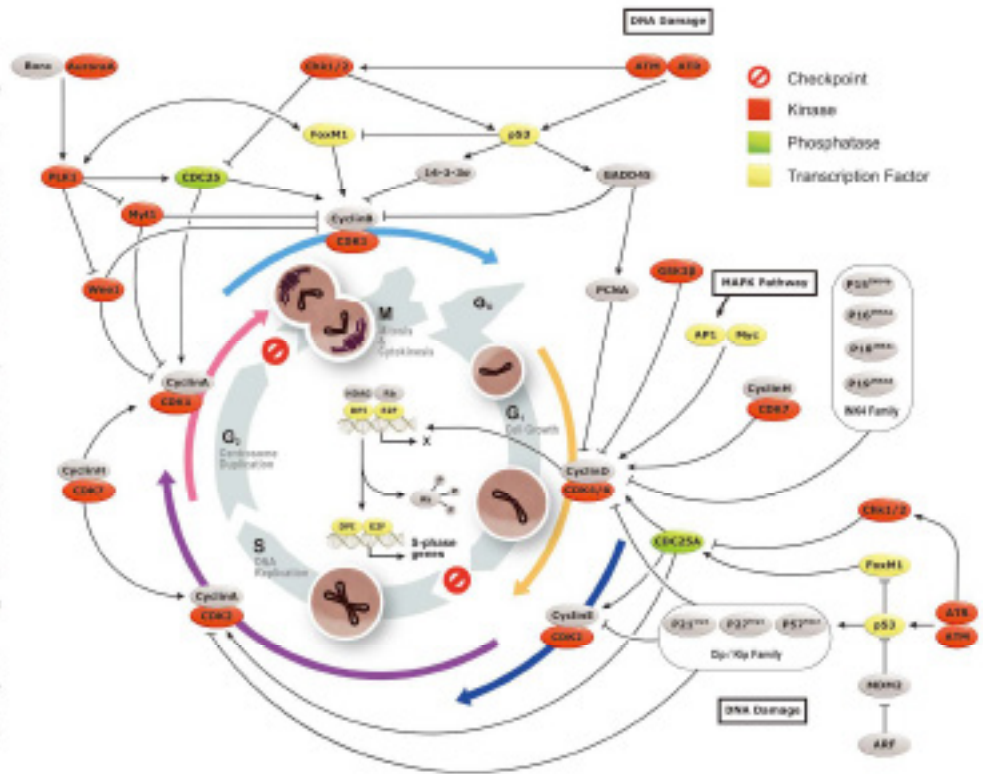
Your Expertise

Our Antibodies

Accelerated Discovery

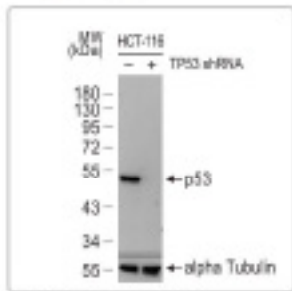
www.genetex.com

The cell cycle is an ordered set of events by which cells undertake growth and division into two daughter cells. In eukaryotes, the cell cycle is described by five phases: G₀, G₁, S, G₂, and M. In G₁ phase, cells have entered a quiescent state or are not dividing. During G₁ period, the cells grow and accumulate nutrients for the subsequent S phase, where DNA replication occurs. The gap between S and M phases is termed G₂ period, during which the cells continue to grow and prepare for mitosis that occurs in M phase. All these processes are elaborately controlled to ensure proper cell development and renewal. The key molecules that program cell cycle are cyclins and cyclin-dependent kinases (CDKs), whereas inhibitors that prevent improper cell division are two families of genes, the Cip / Kip family and the INK4 family. Notably, these inhibitor genes are also termed tumor suppressor genes as they are instrumental in the prevention of tumor formation.

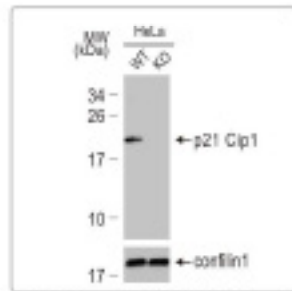


Highlighted Products

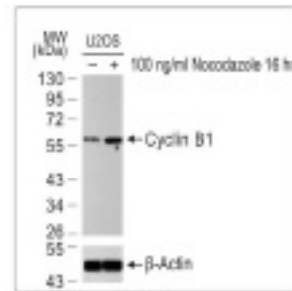
Citation Support KO/KD Validation



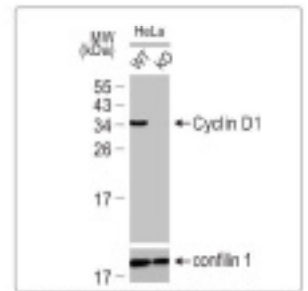
p53 antibody [DD1] (GTx70214)



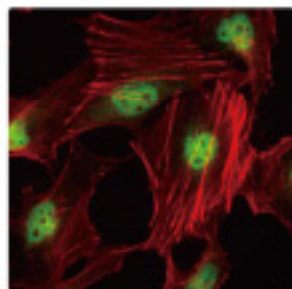
p21 Cip1 antibody [GT1032] (GTx629543)



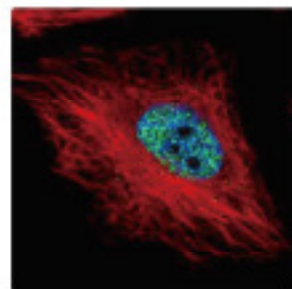
Cyclin B1 antibody (GTx100911)



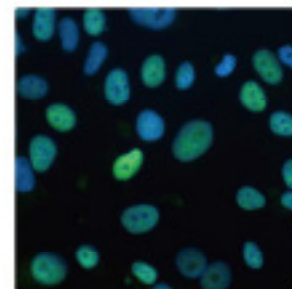
Cyclin D1 antibody [N1C3] (GTx108624)



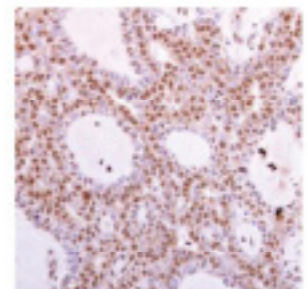
CDK4 antibody (GTx102993)



Cyclin E1 antibody (GTx103045)



Rb antibody (GTx100545)



CDK6 antibody [N1C3] (GTx103992)

Cat. No.	Product Name	Host & Clonality	Reactivity	Application
GTX100801	14-3-3 sigma antibody	Rb pAb	Hu, Ms	ICC/IF, IHC-P, IP, WB
GTX70103	ATM antibody [2C1]	Ms mAb	Hu, Ms, Mk, Rat	ELISA, FACS, ICC/IF, IHC-P, IP, WB, IHC-R, ChIP assay
GTX70109	ATR antibody [2B5]	Ms mAb	Hu	ICC/IF, IP, WB, Functional Assay
GTX104620	Aurora A antibody [C3], C-term	Rb pAb	Hu, Ms, Rat	ICC/IF, IHC-P, IP, WB
GTX130211	Aurora B antibody	Rb pAb	Hu	WB
GTX85297	Bora antibody	Rb pAb	Hu, Ms, Rat	ELISA, ICC/IF, IHC-P, WB
GTX128091	BrdU antibody	Rb pAb	Other	FACS, ICC/IF, IHC, IHC-Fr, IHC-P
GTX108120	CDC2 antibody [N1], N-term	Rb pAb	Hu, Ms, Rat	ICC/IF, IHC-P, IP, WB
GTX102308	CDC25A antibody	Rb pAb	Hu, Ms, Rat	IHC-P, WB
GTX113331	CDC25B antibody [C1C3]	Rb pAb	Hu	WB
GTX102809	CDC25C antibody	Rb pAb	Hu	ICC/IF, IHC-P, WB
GTX132838	CDK2 antibody	Rb pAb	Hu	WB
GTX102993	CDK4 antibody	Rb pAb	Hu, Ms, Cow, Rat	ICC/IF, IHC-P, WB
GTX103992	CDK6 antibody [N1C3]	Rb pAb	Hu, Ms	ICC/IF, IHC-P, WB
GTX111919	CDK7 antibody	Rb pAb	Hu, Ms	IHC-P, IP, WB
GTX100070	Chk1 antibody [C1C2-6], Internal	Rb pAb	Hu	ICC/IF, IHC-P, WB
GTX101100	Chk2 antibody [488]	Ms mAb	Hu	IP, WB
GTX129846	c-Fos antibody	Rb pAb	Hu	ICC/IF, WB
GTX103436	c-Myc antibody	Rb pAb	Hu, Ms	ICC/IF, IHC-P, IP, WB, ChIP assay
GTX103042	Cyclin A2 antibody	Rb pAb	Hu, Ms, Rat	ICC/IF, IHC-P, IP, WB
GTX100911	Cyclin B1 antibody	Rb pAb	Hu, Ms	IHC-P, WB
GTX111118	Cyclin B2 antibody	Rb pAb	Hu, Rat	ICC/IF, IHC-P, WB
GTX108624	Cyclin D1 antibody [N1C3]	Rb pAb	Hu, Rat	ICC/IF, IP, WB
GTX133418	Cyclin D2 antibody	Rb pAb	Hu	ICC/IF, IHC-P, WB
GTX101522	Cyclin D3 antibody	Rb pAb	Hu, Ms, Rat	ICC/IF, IHC-P, WB
GTX23927	Cyclin E antibody [HE12]	Ms mAb	Hu, Ms	IHC, IHC-P, WB
GTX113275	DP1 antibody [N2C3]	Rb pAb	Hu, Ms	IP, ChIP-seq, WB
GTX102302	E2F3 antibody [N2C3]	Rb pAb	Hu	WB
GTX102170	FOXM1 antibody	Rb pAb	Hu	IP, WB, ChIP assay
GTX108257	GADD45G antibody [C1C3]	Rb pAb	Hu	ICC/IF, WB
GTX111192	GSK3 beta antibody [C1C3]	Rb pAb	Hu, Ms, Rat	ICC/IF, IHC-P, WB
GTX16667	Ki67 antibody [SP6]	Rb mAb	Hu, Ms, Rat, Zfish	ICC/IF, IHC, IHC-Fr, IHC-P, WB
GTX101820	Ku70 antibody	Rb pAb	Hu	ICC/IF, IHC-P, IP, WB
GTX109935	Ku80 antibody [N3C2], Internal	Rb pAb	Hu, Ms, Rat	ICC/IF, IHC-P, IP, WB
GTX128188	MYT1 antibody	Rb pAb	Hu, Ms	IHC-P, WB
GTX75687	p15 INK4b antibody [DC5114.1]	Ms mAb	Hu	IHC, IHC-Fr, IP, WB
GTX129902	p16 INK4a / CDKN2A / p14ARF antibody	Rb pAb	Hu	IHC-P, IP, WB
GTX130798	p18 INK4c antibody	Rb pAb	Ms	WB
GTX75691	p19 INK4d antibody [DC5100.1]	Ms mAb	Hu	IHC-Fr, IP, WB
GTX112898	p21 Cip1 antibody	Rb pAb	Hu, Chk	ICC/IF, IHC-P, WB
GTX629543	p21 Cip1 antibody [GT1032]	Ms mAb	Hu, Ms	ICC/IF, IP, WB
GTX100446	p27 Kip1 antibody	Rb pAb	Hu, Ms	IP, ICC/IF, IHC-Fr, WB, IHC-P
GTX70214	p53 antibody [D01]	Ms mAb	Hu	ELISA, FACS, ICC/IF, IHC-Fr, IHC-P, IP, WB
GTX100629	p53 antibody [N1], N-term	Rb pAb	Hu	ICC/IF, IHC-P, IP, WB
GTX132923	p57 Kip2 antibody	Rb pAb	Hu	WB
GTX104302	PLK1 antibody [N2C2], Internal	Rb pAb	Hu, Ms	ICC/IF, IHC-P, WB
GTX100545	Rb antibody	Rb pAb	Hu	ICC/IF, IHC-P, IP, WB
GTX133893	Rb (phospho Ser780) antibody	Rb pAb	Hu	WB
GTX111392	WEE1 antibody [N3C2], Internal	Rb pAb	Hu, Ms	WB, IHC-P

Stratech e: info@stratech.co.uk w: stratech.co.uk/genetex t: +44 (0) 1638 782600

GeneTex

INTERNATIONAL

Tel: 886.3.6208985 Address: #F-2, No.68, Dongnei Rd., Hsichu 300, Taiwan (R.O.C.)
 Fax: 886.3.6208989 E-mail: international@genetex.com

USA

Toll-free: 1.877.GeneTex(1.877.436.3839) Address: 2456 Alton Parkway, Irvine, CA 92606 USA
 Fax: 1.949.309.2988 E-mail: info@genetex.com

www.genetex.com

PD-C010-190226