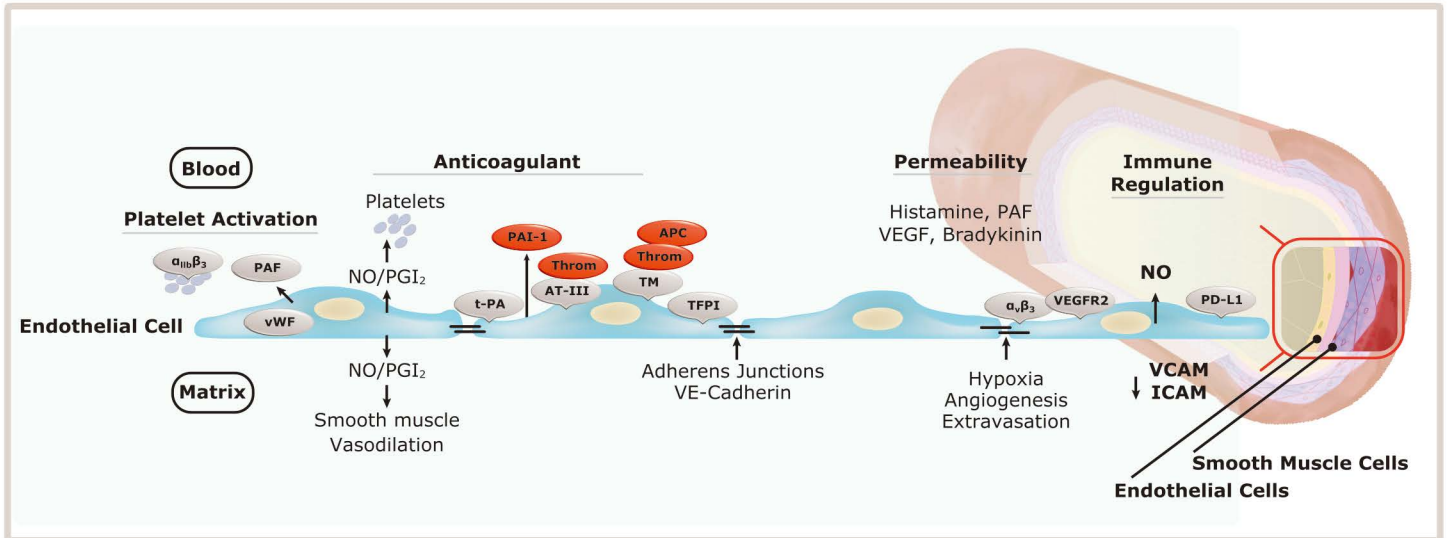


Endothelial Cell Markers

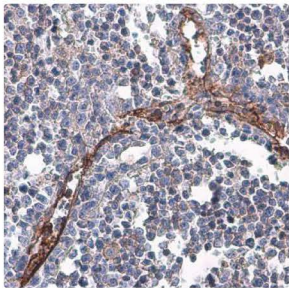
- Your Expertise
- Our Antibodies
- Accelerated Discovery

www.genetex.com

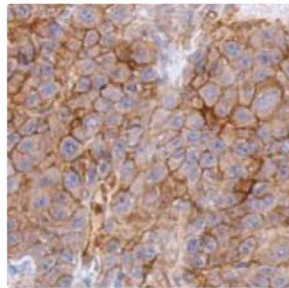


Endothelial Cell Markers

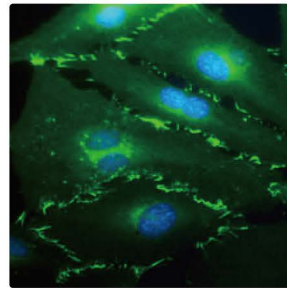
Citation Support KO/KD Validation Orthogonal Validation



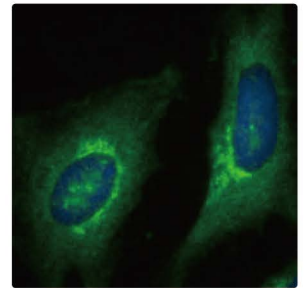
CD31 antibody [N3C2]
Internal (GTX110602)



CD146 antibody [C1C3]
(GTX108777)



VE-cadherin antibody
[GT1369] (GTX633705)



eNOS (phospho Ser1177)
antibody (GTX129058)

Highlighted Products

Citation Support

| Cat. No. | Product Name | Clonality | Reactivity | Application |
|-----------|---------------------------------------|-----------|------------|---|
| GTX632645 | CD31 antibody [GT0010] | Hm mAb | Ms, Rat | FACS, IHC-P |
| GTX110602 | CD31 antibody [N3C2], Internal | Rb pAb | Hu | IHC-P, WB |
| GTX28158 | CD34 antibody [MEC14.7] | Rat mAb | Hu, Ms, Rb | ELISA, FACS, ICC/IF, IHC, IHC-Fr, IHC-P, IP, WB |
| GTX129843 | eNOS antibody | Rb pAb | Hu | ICC/IF, WB |
| GTX78387 | ICAM1 / CD54 antibody [1H4] | Ms mAb | Hu | FACS, ICC/IF, IHC-Fr, IHC-P, WB |
| GTX107505 | TIE2 antibody | Rb pAb | Hu | IHC-P, WB |
| GTX110684 | VCAM1 / CD106 antibody [N1N2], N-term | Rb pAb | Hu | IHC-P, WB |
| GTX633705 | VE-Cadherin antibody [GT1369] | Ms mAb | Hu | ICC/IF, WB |
| GTX129943 | VEGF Receptor 2/KDR antibody | Rb pAb | Hu | WB |
| GTX26994 | VWF antibody | Rb pAb | Hu | IHC-P, WB |

Highlighted Products



| Cat. No. | Product Name | Clonality | Reactivity | Application |
|-----------|---|-----------|------------------------|------------------------------------|
| GTX11738 | ACE antibody [9B9] | Ms mAb | Hu, Mk, Rat, Cat, Hm | ELISA, FACS, IHC-Fr, IP |
| GTX78404 | CD105 antibody [MEM-229] | Ms mAb | Hu, Pig | FACS, ICC/IF, WB |
| GTX79974 | CD105 antibody [MEM-229] (FITC) | Ms mAb | Hu, Pig | FACS, ICC/IF, WB |
| GTX79975 | CD105 antibody [MEM-229] (PE) | Ms mAb | Hu, Pig | FACS, ICC/IF, WB |
| GTX100508 | CD105 antibody [N3C3] | Rb pAb | Hu | IHC-P, WB |
| GTX60775 | CD146 antibody [6C3E6] | Ms mAb | Hu | ELISA, FACS, IHC, IHC-P, WB |
| GTX108777 | CD146 antibody [C1C3] | Rb pAb | Hu, Ms, Rat | ICC/IF, IHC-P, WB |
| GTX42394 | CD151 antibody [11G5a] | Ms mAb | Hu | ELISA, FACS, IHC-Fr, IHC-P, IP, WB |
| GTX75455 | CD151 antibody [11G5a] (FITC) | Ms mAb | Hu | FACS, ICC/IF |
| GTX110602 | CD31 antibody [N3C2], Internal | Rb pAb | Hu | IHC-P, WB |
| GTX20218 | CD31 antibody [WM59] | Ms mAb | Hu, Ms, Chk, RMK, CIMK | FACS, ICC/IF, IHC, IHC-P, IP |
| GTX75411 | CD34 antibody [MEC14.7] (FITC) | Rat mAb | Hu, Ms | FACS, ICC/IF, IHC |
| GTX42057 | CD34 antibody [MEC14.7] (Low endotoxin, azide free) | Rat mAb | Hu, Ms | FACS, ICC/IF, IHC, IHC-P, IP |
| GTX75414 | CD34 antibody [MEC14.7] (PE) | Rat mAb | Hu, Ms, Rb | FACS, ICC/IF, IHC |
| GTX100642 | CD36 antibody [C1C3] | Rb pAb | Hu, Ms | ICC/IF, IHC-P, WB |
| GTX54691 | CD62E antibody | Rb pAb | Hu, Ms, Rat | ICC/IF, IHC-P, WB |
| GTX133729 | CD62P antibody | Rb pAb | Hu | WB |
| GTX33947 | c-Kit antibody | Rb pAb | Hu, Ms, Rat | ICC/IF, IHC-P, WB |
| GTX124232 | CTGF antibody | Rb pAb | Hu, Ms, Rat, Bb, Bov | IHC-P, WB |
| GTX124233 | CTGF antibody | Rb pAb | Hu, Ms, Rat | IHC-P, WB |
| GTX31630 | CXCR4 antibody | Rb pAb | Hu | ELISA, FACS, ICC/IF, IP, WB |
| GTX100024 | EDG1 antibody [C2C3], C-term | Rb pAb | Hu, Ms | ICC/IF, IHC-P, WB |
| GTX108199 | EDG3 antibody [C2C3], C-term | Rb pAb | Hu | WB |
| GTX116033 | Endothelin 1 antibody [C1C3] | Rb pAb | Hu | ICC/IF, IHC, WB |
| GTX129113 | eNOS antibody | Rb pAb | Hu | WB |
| GTX133404 | eNOS antibody | Rb pAb | Hu | WB |
| GTX125912 | EPCR antibody | Rb pAb | Hu, Ms | WB |
| GTX100450 | ICAM1 / CD54 antibody [N1C2] | Rb pAb | Hu | IHC-P, WB |
| GTX100789 | Integrin alpha V antibody [C2C3], C-term | Rb pAb | Hu, Ms | ELISA, IHC-P, WB |
| GTX102397 | NRP2 antibody [N2N3] | Rb pAb | Hu | WB |
| GTX106354 | SCARF1 antibody | Rb pAb | Hu | WB |
| GTX116035 | Thrombin Receptor antibody [N1N2], N-term | Rb pAb | Hu | IHC-P, WB |
| GTX107818 | TIE1 antibody | Rb pAb | Hu, Ms | IHC-P, WB |
| GTX107838 | TIE2 antibody [C1C3] | Rb pAb | Hu, Ms | IHC-P, WB |
| GTX110684 | VCAM1 / CD106 antibody [N1N2], N-term | Rb pAb | Hu | IHC-P, WB |
| GTX132982 | VE-Cadherin antibody | Rb pAb | Hu | WB |
| GTX128969 | VEGF Receptor 1 antibody | Rb pAb | Hu | WB |
| GTX129943 | VEGF Receptor 2/KDR antibody | Rb pAb | Hu | WB |
| GTX17530 | VEGF Receptor 2/KDR antibody | Chk pAb | Hu, Ms, Rat, Bov | IHC, WB |
| GTX100807 | VEGF Receptor 3 antibody | Rb pAb | Hu, Ms | WB |
| GTX26994 | VWF antibody | Rb pAb | Hu | IHC-P, WB |
| GTX28822 | VWF antibody (FITC) | Shp pAb | Hu, Ms | FACS, ICC/IF, IHC-Fr, IHC-R |



e: info@stratech.co.uk **w:** stratech.co.uk/genetex **t:** +44 (0) 1638 782600



INTERNATIONAL

Tel 886.3.6208988 Address 6F-2, No.89, Dongmei Rd., Hsinchu 300, Taiwan (R.O.C.)
Fax 886.3.6208989 E-mail international@genetex.com

USA

Toll-free 1.877.GeneTex(1.877.436.3839)
Fax 1.949.309.2888

Address 2456 Alton Parkway, Irvine, CA 92606 USA
E-mail info@genetex.com

www.genetex.com

PD-C010-190226