

Epitope Tag & Reporter Antibodies

Your Expertise

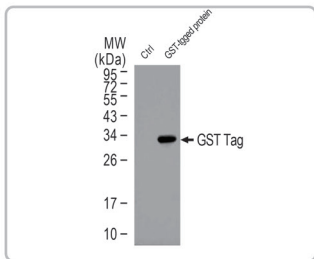
Our Antibodies

Accelerated Discovery

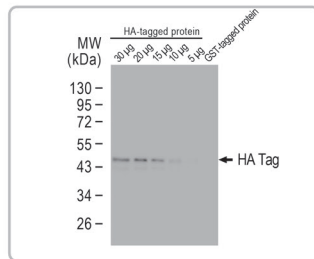
www.genetex.com




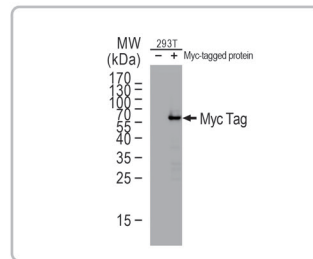
 Citation Support



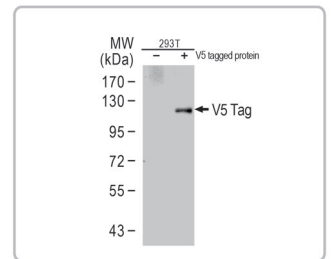
GST tag antibody [3G10]
(GTX70195) 




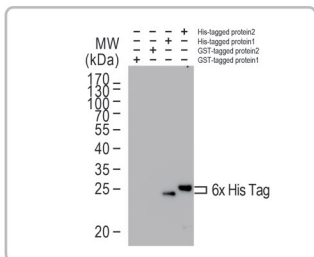
HA tag antibody [GT423]
(GTX628489) 




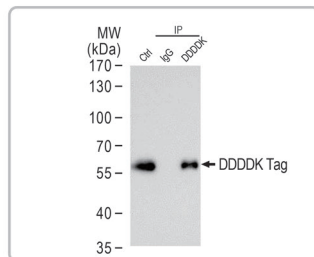
Myc tag antibody [GT0002]
(GTX628259) 



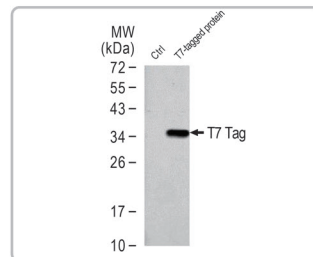
V5 tag antibody
(GTX117997) 



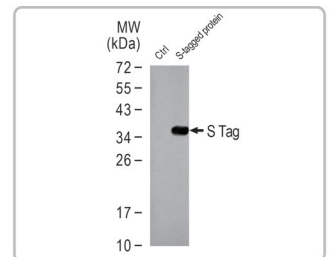
6X His tag antibody [GTX359]
(HRP) (GTX628914-01) 




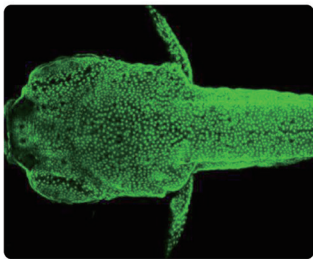
DDDDK tag antibody [GT231]
(GTX629631) 




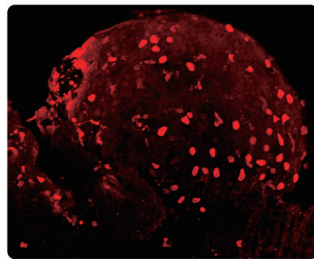
T7 tag antibody
(GTX128059)




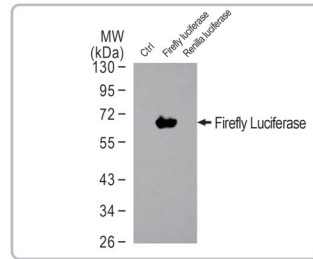
S Tag antibody [GT247]
(GTX628791) 



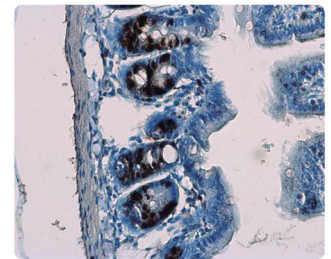
GFP antibody
(GTX113617) 




mCherry antibody
(GTX128508) 



Firefly Luciferase antibody
(GTX125849) 



BrdU antibody
(GTX128091) 

Representative Publications

GST tag antibody [3G10] (GTX70195)
J Biol Chem. 2017 Feb 10;292(6):2369-2378. (IP)
Nat Cell Biol. 2009 Aug;11(8):967-72. (IP)

HA tag antibody [GT423] (GTX628489)
Virology. 2016 Sep;496:116-26. (WB)
Sci Rep. 2015 Mar 5;5:8796. (WB)

Myc tag antibody [GT0002] (GTX628259)
EMBO Rep. 2016 May;17(5):695-707. (ICC/IF)

V5 tag antibody (GTX117997)
Mol Cell Biol. 2017 Apr 3. pii: MCB.00437-16. (WB)
Sci Rep. 2016 May 24;6:26618. (WB)

6X His tag antibody (HRP) (GTX628914-01)
Acta Crystallogr D Biol Crystallogr. 2015 Apr;
71(Pt 4):1006-21. (WB)















S Tag antibody [GT247] (GTX628791)
Mol Biol Cell. 2015 Feb 1;26(3):440-52. (WB)

GFP antibody (GTX113617)
Sci Rep. 2016 Apr 18;6:24023. (WB)
Circ Res. 2015 Feb 13;116(4):633-41. (IHC-P)


mCherry antibody (GTX128508)
Biochem J. 2015 Oct 15;471(2):199-209. (WB)
J Biomed Sci. 2015 Nov 17;22:102. (WB)










Tag Antibodies

 Citation Support


Cat. No.	Product Name	Host & Clonality	Application
 GTX628914	6X His tag antibody [GT359]	Ms mAb	ELISA, ICC/IF, IP, WB
 GTX628914-01	6X His tag antibody [GT359] (HRP)	Ms mAb	WB
 GTX115043	DDDDK tag antibody	Rb pAb	ELISA, FACS, ICC/IF, IP, WB
 GTX629631	DDDDK tag antibody [GT231]	Ms mAb	IP, WB
GTX21267	Glu-Glu tag antibody (HRP)	Gt pAb	ELISA, ICC/IF, IHC, WB
GTX30789	Glu-Glu tag antibody [Glu-Glu]	Ms mAb	ICC/IF, IHC, IP, WB
 GTX110736	GST antibody	Rb pAb	IP, WB
 GTX70195	GST tag antibody [3G10]	Ms mAb	IP, WB
 GTX115044	HA tag antibody	Rb pAb	ELISA, ICC/IF, IP, WB, IB
 GTX628489	HA tag antibody [GT423]	Ms mAb	ICC/IF, IP, WB
 GTX628259	Myc tag antibody [GT0002]	Ms mAb	ICC/IF, IP, WB
GTX628259-01	Myc tag antibody [GT0002] (HRP)	Ms mAb	WB
 GTX128060	S Tag antibody	Rb pAb	ICC/IF, IP, WB
 GTX628791	S Tag antibody [GT247]	Ms mAb	IP, WB
GTX128061	Strep Tag antibody	Rb pAb	WB
 GTX628900	Strep Tag antibody [GT661]	Ms mAb	ICC/IF, IP, WB
GTX128059	T7 tag antibody	Rb pAb	WB
 GTX117997	V5 tag antibody	Rb pAb	ICC/IF, IP, WB
 GTX628529	V5 tag antibody [GT1071]	Ms mAb	ICC/IF, IP, WB
GTX23863	VSV-G tag antibody (FITC)	Gt pAb	ICC/IF, IHC
GTX23862	VSV-G tag antibody (HRP)	Gt pAb	ELISA, ICC/IF, IHC, WB


Reporter Antibodies

 Citation Support

Cat. No.	Product Name	Host & Clonality	Application
GTX59680	BFP antibody	Rb pAb	WB
 GTX124262	Biotin antibody	Rb pAb	WB
 GTX128091	BrdU antibody	Rb pAb	FACS, ICC/IF, IHC, IHC-Fr, IHC-P
 GTX21893	BrdU antibody	Shp pAb	ELISA, ICC/IF, IHC, IHC-Fr, IHC-P, IP
 GTX26326	BrdU antibody [BU1/75 (ICR1)]	Rat mAb	FACS, ICC/IF, IHC-Fr, IHC-P
GTX59717	CFP antibody	Rb pAb	WB
 GTX125849	Firefly Luciferase antibody	Rb pAb	IHC-Fr, WB
 GTX19490	FITC antibody	Gt pAb	ELISA, ICC/IF, IHC, IHC-Fr, WB
 GTX113617	GFP antibody	Rb pAb	ELISA, ICC/IF, IHC, IHC-Fr, IHC-P, IP, WB, IHC-Wm
 GTX628528	GFP antibody [GT859]	Ms mAb	ELISA, ICC/IF, IHC-Fr, IHC-P, IP, WB, IHC-Wm
 GTX128508	mCherry antibody	Rb pAb	ICC/IF, IP, WB, IHC-Wm
GTX630144	mCherry antibody [GT235]	Ms mAb	WB
 GTX125851	Renilla Luciferase antibody	Rb pAb	WB
 GTX127897	RFP antibody	Rb pAb	ICC/IF, IP, WB
GTX628545	RFP antibody [GT1610]	Ms mAb	ICC/IF, IP, WB

Others

 Citation Support

Cat. No.	Product Name	Host & Clonality	Application
 GTX53807	Cas9 antibody [7A9]	Ms mAb	ICC/IF, IP, WB
GTX133299	CPF1 antibody	Rb pAb	ICC/IF, WB
GTX133296	CPF1 antibody	Rb pAb	ICC/IF, WB
GTX127271	Cre recombinase antibody	Rb pAb	IP, WB
GTX629479	Cre recombinase antibody [GT10212]	Ms mAb	IP, WB



 e: info@stratech.co.uk  w: stratech.co.uk/genetex  t: +44 (0) 1638 782600

GeneTex

International Tel: 886.3.6208988
USA Tel: 1.949.553.1900 Toll-free: 1.877.436.3839

www.genetex.com

PD-K001-190315