

Five Pillars of Ab Validation


Your Expertise

Our Antibodies

Accelerated Discovery

www.genetex.com

GeneTex understands the absolute necessity for reliable antibodies to achieve accurate and reproducible experimental results. To optimize the performance of our reagents, we employ various analytic validation strategies to ensure both consistent quality and specificity. These modalities are in line with guidelines described by the International Working Group on Antibody Validation (IWGAV) and have become fundamental components of our quality assurance process:



KO/KD Validation Knockout/Knockdown

Complete or significant reduction of signal following genome editing or RNA interference of target protein.




Comparable Abs Comparable Antibodies

Correlation between two antibodies against the same target with different epitopes across several samples, preferentially with different expression levels of the target protein.



IP/MS Analysis IP/MS

Mass spec analysis of target protein peptide sequences from samples immunoprecipitated by antibody from lysates.



Orthogonal Validation Biological and Orthogonal Characteristics

Change of antibody signal in accordance with defined biological characteristics of target protein following specific sample preparation parameters, including drug treatments, hypoxia conditions, or subcellular fractionation. Also, analysis of signals from various cell lines that either do or do not express the target in the context of protein or mRNA levels.



Protein Overexpression Protein Overexpression

To confirm the endogenous signals detected by the antibody are the target protein, transfected cells with cDNA encoding the target protein are used as a positive control and independently validated by western blot.

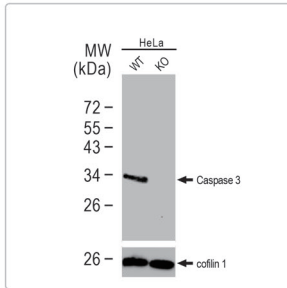
- To facilitate your search, antibodies that satisfied at least one of these validation methods are identified by the certification icons.
- **References:** *Nat Methods*. 2016 Oct;13(10):823-7.



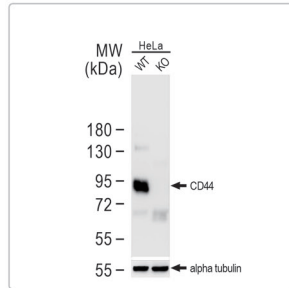
Five Pillars

Representative Products

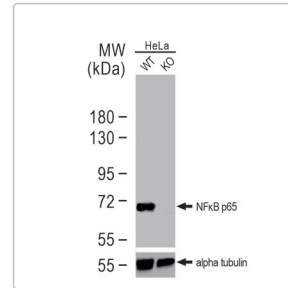
KO/KD Validation



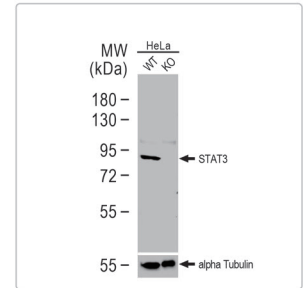
Caspase 3 antibody (GTX110543)



CD44 antibody (GTX102111)

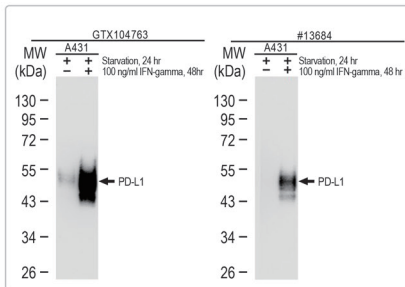


NfκB p65 antibody (GTX102090)

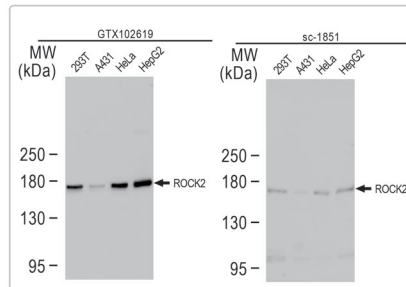


STAT3 antibody [C3], C-term (GTX104616)

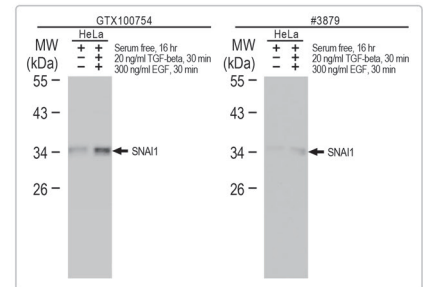
Comparative Abs



PD-L1 antibody (GTX104763)

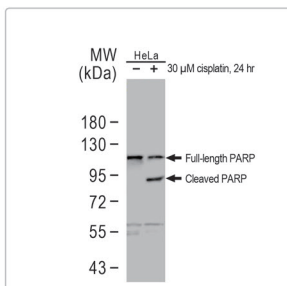


ROCK2 antibody (GTX102619)

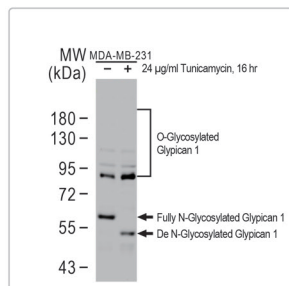


SNA11 antibody (GTX100754)

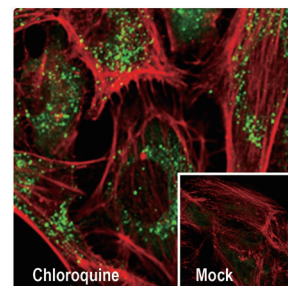
Orthogonal Validation



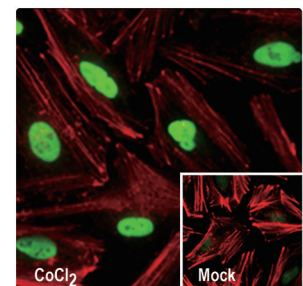
PARP antibody (GTX100573)



Glypican 1 antibody [N3C3] (GTX104557)

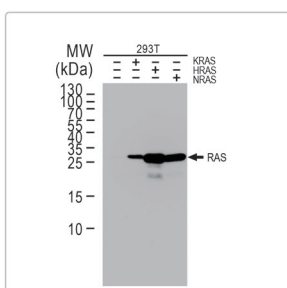


SQSTM1 antibody [N3C1], Internal (GTX100685)

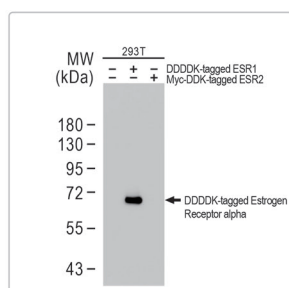


HIF1 alpha antibody (GTX127309)

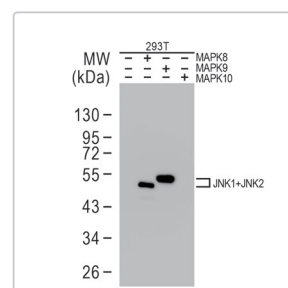
Protein Overexpression



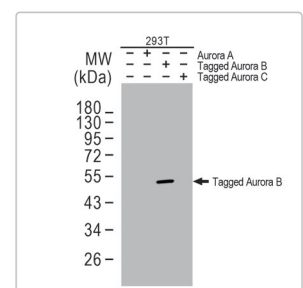
Ras antibody (GTX132480)



Estrogen Receptor alpha antibody [1F3] (GTX70171)



JNK1 + JNK2 antibody (GTX133806)



Aurora B antibody (GTX130211)