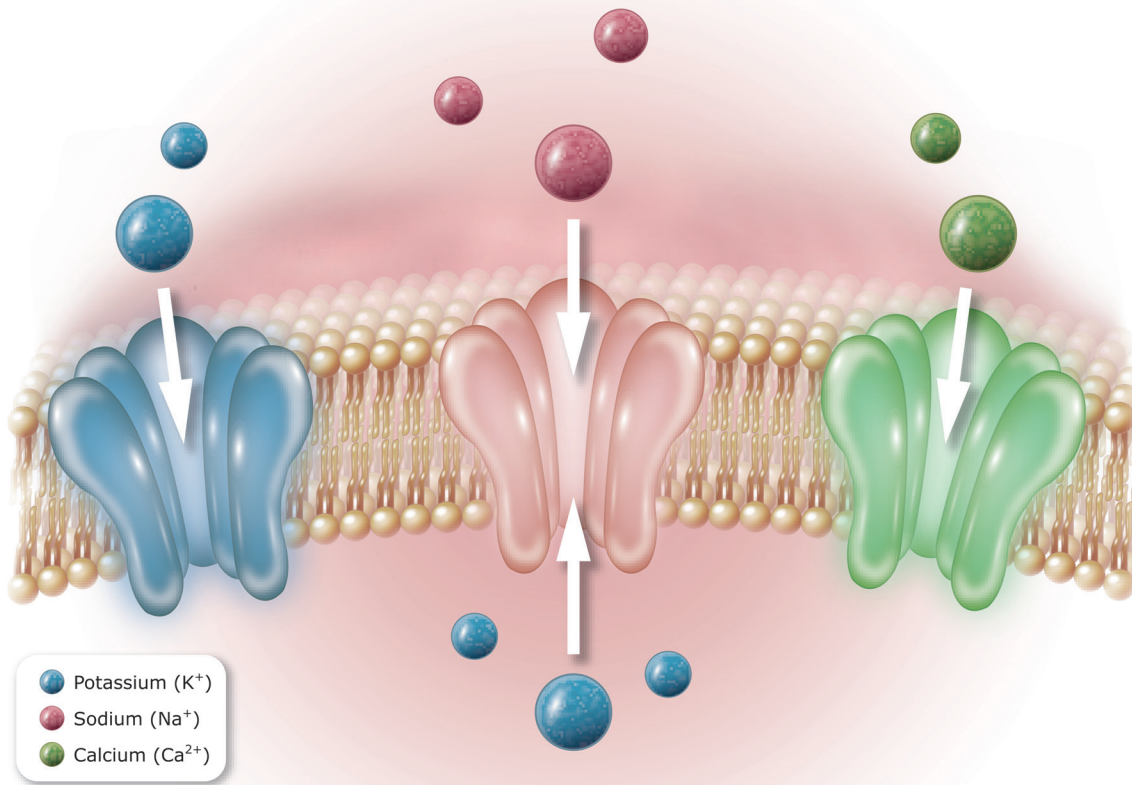


Ion Channels

www.genetex.com

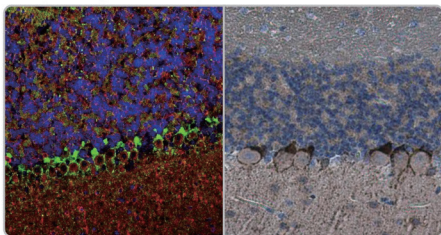
- Your Expertise
- Our Antibodies
- Accelerated Discovery



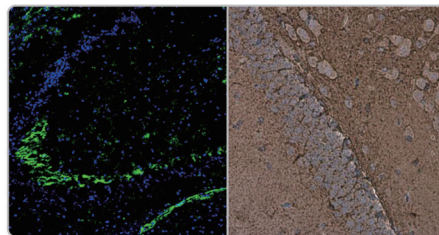
Ion channels are pore-forming, usually multimeric plasma membrane proteins that can open and close in response to chemical, temperature, or mechanical signals. An open channel allows specific ions to rapidly traverse the transmembrane passageway along an electrochemical gradient, generating an electrical signal that is propagated along excitable cells. Ion channels are of immense importance in clinical medicine as they are linked to a broad array of disorders and are targets of an ever-expanding, and commonly prescribed, armamentarium of pharmacologic agents. Nevertheless, there remains a great void in our understanding of ion channel biology, which limits our ability to develop more effective and more specific drugs.

GeneTex offers an outstanding selection of antibodies to support ion channel research. Please see the highlighted antibodies in this flyer or review our complete list of related products on the GeneTex website.

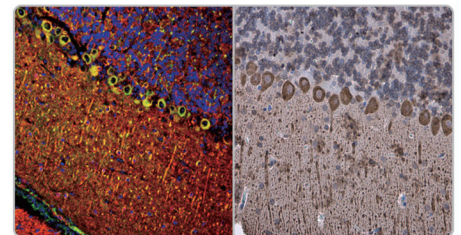
Highlighted products



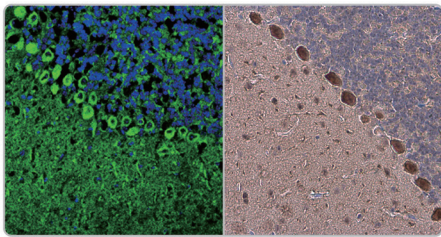
HCN1 antibody (GTX131334)



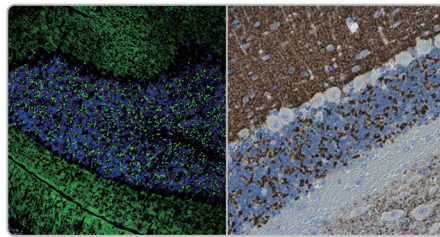
DPP6 antibody (GTX133338)



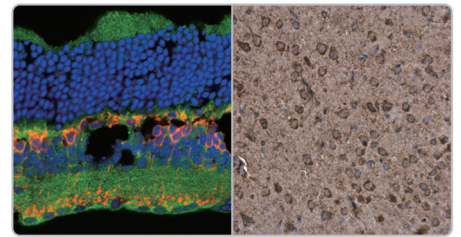
IP3 Receptor I antibody (GTX133104)



CACNB4 (GTX100202)



VGLUT1 antibody (GTX133148)

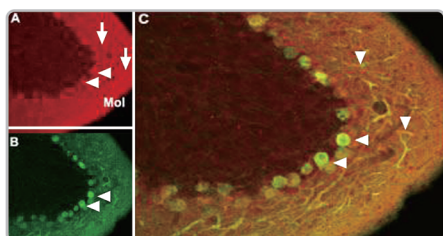


P2X7 antibody (GTX104288)

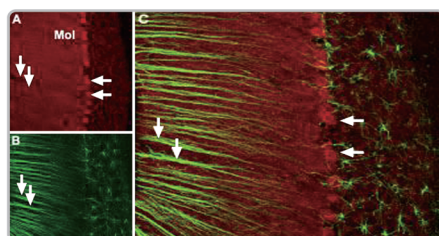
List of Representative Products



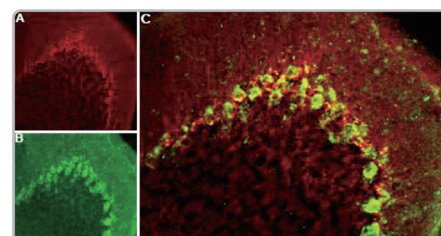
	Cat. No.	Product Name	Host & Clonality	Reactivity	Application
	GTX54770	Cav alpha 2/delta 2 antibody	Rb pAb	Hu, Ms, Rat	IHC, WB
	GTX108807	Cav beta 1 antibody [C1C3]	Rb pAb	Hu, Ms, Rat	ICC/IF, WB
	GTX54771	Cav beta 2 antibody	Rb pAb	Ms, Rat	WB
	GTX100202	Cav beta 4 antibody [C3], C-term	Rb pAb	Hu, Ms	ICC/IF, IHC-Fr, IHC-P, WB
	GTX102941	Cav1.1 antibody [N2N3]	Rb pAb	Hu	IHC-P, WB
	GTX54754	Cav1.2 antibody	Rb pAb	Hu, Ms, Rat	FACS, ICC/IF, IHC, IP, WB
	GTX54755	Cav1.3 antibody	Rb pAb	Hu, Ms, Rat	ICC/IF, IHC, IP, WB
	GTX54753	Cav2.1 antibody	Rb pAb	Hu, Ms, Rat	ICC/IF, IHC, WB
	GTX54812	Cav2.2 antibody	Rb pAb	Hu, Ms, Rat	ICC/IF, IHC, IP, WB
	GTX54756	Cav2.3 antibody	Rb pAb	Hu, Ms, Rat	ICC/IF, IHC, WB
	GTX54760	Cav3.1 / CACNA1G antibody	Rb pAb	Hu, Ms, Rat	ICC/IF, IHC, WB
	GTX54813	Cav3.2 antibody	Rb pAb	Hu, Ms, Rat	ICC/IF, IHC-Fr, IP, WB
	GTX16604	Cav3.3 antibody	Rb pAb	Hu, Ms, Rat	ICC/IF, IHC, WB
	GTX133149	IP3 Receptor I antibody	Rb pAb	Ms, Rat	IHC-Fr, IHC-P, WB
	GTX133104	IP3 Receptor I antibody	Rb pAb	Hu, Ms, Rat	ICC/IF, IHC-Fr, WB
	GTX16613	ORAI1 antibody	Rb pAb	Hu, Ms, Rat	FACS, ICC/IF, IHC, IHC-P, WB
	GTX120952	ORAI2 antibody	Rb pAb	Hu	IHC-P, WB
	GTX85442	ORAI3 antibody	Rb pAb	Hu, Ms, Rat	ELISA, ICC/IF, IHC-P, WB
	GTX54855	STIM1 antibody	Rb pAb	Hu, Ms, Rat	FACS, ICC/IF, IHC-P, IP, WB
	GTX85440	STIM2 antibody	Rb pAb	Hu, Ms, Rat	ELISA, IHC-P, WB
Calcium Channels	GTX54765	TRPA1 antibody	Rb pAb	Hu, Ms, Rat	ICC/IF, IHC, IP, WB
	GTX54859	TRPC1 antibody	Rb pAb	Hu, Ms, Rat	ICC/IF, IHC-Fr, IP, WB
	GTX54761	TRPC2 antibody	Rb pAb	Ms, Rat	WB
	GTX54860	TRPC3 antibody	Rb pAb	Hu, Ms, Rat	FACS, ICC/IF, IHC, IHC-Fr, IHC-P, IP, WB
	GTX54758	TRPC4 antibody	Rb pAb	Hu, Ms, Rat	ICC/IF, IHC-Fr, IP, WB
	GTX54861	TRPC5 antibody	Rb pAb	Hu, Ms, Rat	ICC/IF, IHC, WB
	GTX113858	TRPC6 antibody [N1N3]	Rb pAb	Hu, Rat	WB
	GTX42022	TRPC7 antibody [S64A-36]	Ms mAb	Hu, Ms, Rat	ICC/IF, IHC, IP, WB
	GTX112252	TRPM2 antibody [N1N2-2], N-term	Rb pAb	Hu, Rat	IHC-P, WB
	GTX16612	TRPM3 antibody	Rb pAb	Hu, Ms, Rat	WB
	GTX54863	TRPM4 antibody	Rb pAb	Hu, Ms, Rat	IHC-P, WB
	GTX54864	TRPM5 antibody	Rb pAb	Hu, Ms, Rat	IHC-P, WB
	GTX16611	TRPM6 antibody	Rb pAb	Ms, Rat	WB
	GTX41997	TRPM7 antibody [S74-25]	Ms mAb	Hu, Ms, Rat	ICC/IF, IHC, IP, WB
	GTX23243	TRPM8 antibody	Rb pAb	Hu, Ms	IHC-P, WB
	GTX54762	VR1/ TRPV1 antibody	Rb pAb	Hu, Ms, Rat	ICC/IF, IHC, WB
	GTX101868	VRL1 / TRPV2 antibody [C2C3], C-term	Rb pAb	Hu, Ms	IHC-P, WB
	GTX54763	TRPV3 antibody	Rb pAb	Hu, Ms, Rat	ICC/IF, IHC, WB
	GTX54764	TRPV4 antibody	Rb pAb	Hu, Ms, Rat	FACS, ICC/IF, IHC-Fr, IP, WB
	GTX54868	TRPV5 antibody	Rb pAb	Hu, Ms, Rat	ICC/IF, IHC-P, WB
	GTX54869	TRPV6 antibody	Rb pAb	Hu, Ms, Rat	ICC/IF, IHC-Fr, IHC-P, IP, WB
	Catalytic Receptors	GTX54856	TrkA antibody	Rb pAb	Hu, Ms, Rat
GTX54857		TrkB antibody	Rb pAb	Hu, Ms, Rat	FACS, ICC/IF, IHC, IHC-Fr, WB
GTX54858		TrkC antibody	Rb pAb	Hu, Ms, Rat	ICC/IF, IHC-Fr, WB
Transporters	GTX133148	VGLUT1 antibody	Rb pAb	Ms, Rat	ICC/IF, IHC-Fr, IHC-P, WB
	GTX133142	VGLUT2 antibody	Rb pAb	Ms, Rat	ICC/IF, IHC-Fr, WB
	GTX54872	VGLUT3 antibody	Rb pAb	Ms, Rat	IHC-Fr, WB



Cav1.2 antibody (GTX54754)



Cav2.1 antibody (GTX54753)



Cav3.2 antibody (GTX54813)

List of Representative Products

Citation Support Orthogonal Validation

	Cat. No.	Product Name	Host & Clonality	Reactivity	Application
Potassium Channels	GTX79456	CNG Channel antibody [CNC 9C1]	Ms mAb	Hu, Ms, Rat	ICC/IF, IHC, WB
	GTX112498	CNGA2 antibody [C1C3]	Rb pAb	Hu, Ms	ICC/IF, IHC-P, WB
	GTX54816	CNGA2 antibody	Rb pAb	Ms, Rat	ICC/IF, IHC, WB
	GTX105162	CNGA3 antibody [N3C3]	Rb pAb	Ms	IHC-P
	GTX133338	DPP6 antibody	Rb pAb	Ms, Rat	IHC-Fr, IHC-P, WB
	GTX131334	HCN1 antibody	Rb pAb	Hu, Ms, Rat	ICC/IF, IHC-Fr, IHC-P, WB
	GTX54824	HCN2 antibody	Rb pAb	Hu, Ms, Rat	ICC/IF, IHC, IHC-Fr, IP, WB
	GTX41987	HCN3 antibody [S141-28]	Ms mAb	Hu, Ms, Rat	ICC/IF, IHC, WB
	GTX42001	HCN4 antibody [S114-10]	Ms mAb	Hu, Ms, Rat	ICC/IF, IHC-Fr, WB
	GTX54811	KCNE1 antibody	Rb pAb	Ms, Rat	FACS, ICC/IF, IHC, IP, WB
	GTX54783	KCNE2 antibody	Rb pAb	Hu, Ms, Rat	ICC/IF, IHC-Fr, IP, WB
	GTX16690	KCNE3 antibody	Rb pAb	Hu, Ms, Rat	ICC/IF, IHC, WB
	GTX54775	KCNJ1 / ROMK antibody	Rb pAb	Hu, Ms, Rat	ICC/IF, IHC, IP, WB
	GTX47694	KCNN1 antibody, C-term	Rb pAb	Hu	WB
	GTX54829	KCNN2 antibody	Rb pAb	Hu, Ms, Rat	ICC/IF, IHC, IP, WB
	GTX54779	KCNN3 antibody	Rb pAb	Hu, Ms, Rat	ICC/IF, IHC, WB
	GTX130239	KCNN4 antibody	Rb pAb	Hu	WB
	GTX54786	KCNN4 antibody	Rb pAb	Hu, Ms, Rat	ICC/IF, IHC, IP, WB
	GTX54839	KCNQ1 antibody	Rb pAb	Hu, Ms, Rat	ICC/IF, IHC, IP, WB
	GTX54840	KCNQ2 antibody	Rb pAb	Hu, Ms, Rat	ICC/IF, IHC, WB
	GTX54782	KCNQ3/Kv7.3 antibody	Rb pAb	Ms, Rat	ICC/IF, IHC, IP, WB
	GTX41990	KCNQ4 antibody [S43-6]	Ms mAb	Hu, Ms, Rat	ICC/IF, IHC-Fr, IP, WB
	GTX54793	KCNQ5 antibody	Rb pAb	Hu, Ms, Rat	IHC-Fr, WB
	GTX54830	Kir2.1 antibody	Rb pAb	Hu, Ms, Rat	FACS, ICC/IF, IHC, IP, WB
	GTX41992	Kir2.2 antibody [S124B-38]	Ms mAb	Hu, Ms, Rat	ICC/IF, IHC, WB
	GTX16644	Kir2.3 antibody	Rb pAb	Hu, Ms, Rat	ICC/IF, IHC, WB
	GTX108745	Kir3.1/GIRK1 antibody [N3C3]	Rb pAb	Hu, Ms	IHC-P, WB
	GTX54832	Kir3.2/GIRK2 antibody	Rb pAb	Hu, Ms, Rat	ICC/IF, IHC-Fr, IP, WB
	GTX87115	Kir3.3/KCNJ9 antibody	Rb pAb	Hu, Ms, Rat	ELISA, WB
	GTX54780	Kir3.4 antibody	Rb pAb	Hu, Ms, Rat	ICC/IF, IHC, WB
	GTX54781	Kir4.1 antibody	Rb pAb	Hu, Ms, Rat	ICC/IF, IHC, IP, WB
	GTX54833	Kir6.1 antibody	Rb pAb	Hu, Ms, Rat	IHC, IP, WB
	GTX54777	Kir6.2 antibody	Rb pAb	Hu, Ms, Rat	ICC/IF, IHC, IP, WB
	GTX16698	Kir7.1 antibody	Rb pAb	Hu, Ms, Rat	FACS, IHC-P, WB
	GTX54834	Kv1.1 antibody	Rb pAb	Hu, Ms, Rat	ICC/IF, IHC, IP, WB
	GTX54835	Kv1.2 antibody	Rb pAb	Hu, Ms, Rat	ICC/IF, IHC-Fr, WB
	GTX16679	Kv1.3 antibody	Rb pAb	Hu, Ms, Rat	FACS, ICC/IF, IHC, WB
	GTX54836	Kv1.4 antibody	Rb pAb	Hu, Ms, Rat	ICC/IF, IHC, WB
	GTX54837	Kv1.5 antibody	Rb pAb	Hu, Ms, Rat	ICC/IF, IHC, IP, WB
	GTX16716	Kv1.5 antibody	Rb pAb	Hu, Rat	FACS, IHC, WB
	GTX54788	Kv10.1/KCNH1 antibody	Rb pAb	Hu, Ms, Rat	ICC/IF, IHC, WB
	GTX16654	Kv10.2/KCNH5 antibody	Rb pAb	Hu, Rat	IHC, WB
GTX54789	Kv11.1 antibody	Rb pAb	Hu, Rat	FACS, ICC/IF, IHC, IP, WB	
GTX16688	Kv11.2/KCNH6 antibody	Rb pAb	Hu, Ms, Rat	IHC, WB	
GTX16686	Kv11.3/KCNH7 antibody	Rb pAb	Hu, Ms, Rat	ICC/IF, IHC, WB	
GTX16687	Kv12.1 antibody	Rb pAb	Rat	WB	
GTX47445	Kv12.2/KCNH3 antibody, Internal	Rb pAb	Hu	WB	
GTX54790	Kv12.3 antibody	Rb pAb	Hu, Rat	IHC-P, WB	

	Cat. No.	Product Name	Host & Clonality	Reactivity	Application
Sodium Channels	GTX87930	Sodium Channel-pan antibody	Rb pAb	Hu, Ms, Rat	ELISA, IHC-P, WB
	GTX54804	ASIC1 antibody	Rb pAb	Hu, Ms, Rat	ICC/IF, IHC, IP, WB
	GTX80490	ASIC2/ACCN1 antibody, Internal	Rb pAb	Hu	FACS, IHC-P, WB
	C GTX54807	ASIC3 antibody	Rb pAb	Hu, Ms, Rat	ICC/IF, IHC-Fr, WB
	GTX116235	ASIC4/ACCN4 antibody [N1N3]	Rb pAb	Hu	WB
	GTX110436	ENaC Alpha antibody [N3C2], Internal	Rb pAb	Hu, Ms	IHC-P, WB
	GTX41971	ENaC Beta antibody	Rb pAb	Hu, Ms, Rat	ICC/IF, IHC, WB
	GTX49367	ENaC Gamma antibody [11-35-1]	Ms mAb	Hu	ELISA, ICC/IF, IHC-F, IHC-P, WB
	GTX54841	Nav1.1 antibody	Rb pAb	Hu, Ms, Rat	ICC/IF, IHC, IP, WB
	GTX54797	Nav1.2 antibody	Rb pAb	Hu, Ms, Rat	ICC/IF, IHC, IP, WB
	GTX16937	Nav1.3/SCN3A antibody	Rb pAb	Hu, Ms, Rat	ICC/IF, IHC-Fr, IP, WB
	GTX16970	Nav1.4/SCN4A antibody	Rb pAb	Hu, Ms, Rat	ICC/IF, WB
	GTX54798	Nav1.5 antibody	Rb pAb	Hu, Ms, Rat	ICC/IF, IHC-P, IP, WB
	GTX54842	Nav1.6 antibody	Rb pAb	Hu, Ms, Rat	ICC/IF, IHC, WB
	GTX54800	Nav1.7 antibody	Rb pAb	Hu, Ms, Rat	ICC/IF, IHC, WB
	GTX54806	SCN11A antibody	Rb pAb	Hu, Rat	ICC/IF, IHC-Fr, WB
	GTX87701	SCN7A antibody	Rb pAb	Hu	ELISA, ICC/IF
	GTX16973	SCN1B antibody	Rb pAb	Ms, Rat	ICC/IF, IHC, WB
	GTX54799	SCN2B/Nav beta 2 antibody	Rb pAb	Hu, Ms, Rat	IHC, WB
	C GTX104440	SCN3B antibody [N1C3]	Rb pAb	Hu	WB
GTX54810	SCN4B antibody	Rb pAb	Hu, Ms, Rat	ICC/IF, IHC, WB	
Chloride Channels	GTX100217	CLCA1 antibody [C1C2], Internal	Rb pAb	Hu	ICC/IF, IHC-P, WB
	GTX32527	CLCN1 antibody	Rb pAb	Hu, Ms	WB
	GTX54814	CLCN2 antibody	Rb pAb	Ms, Rat	IHC, WB
	GTX54815	CLCN3 antibody	Rb pAb	Hu, Rat	ICC/IF, IHC, IP, WB
	GTX53531	CLCN4 antibody	Rb pAb	Hu, Chk	ICC/IF, IHC-Fr, WB
	GTX53963	CLCN5 antibody	Rb pAb	Hu, Ms	WB
	GTX34317	CLCN6 antibody	Rb pAb	Hu, Ms, Mk, Rat	ELISA, WB
	GTX55139	CLCN7 antibody	Rb pAb	Hu, Ms, Rat	ICC/IF, WB
	GTX55140	CLCNKA antibody	Rb pAb	Hu, Rat	WB
	C GTX47709	CLCNKB antibody, N-term	Rb pAb	Hu, Ms	IHC, WB
P2XY Receptors	GTX16925	P2X1 antibody	Rb pAb	Hu, Ms, Rat	FACS, ICC/IF, IHC, WB
	GTX108534	P2X2 antibody [C3], C-term	Rb pAb	Hu, Ms	ICC/IF, IHC-P, WB
	C GTX117217	P2X3 antibody [N3C3]	Rb pAb	Hu	ICC/IF, IHC-P, WB
	GTX54851	P2X4 antibody	Rb pAb	Hu, Ms, Rat	FACS, ICC/IF, IHC, IP, WB
	GTX108504	P2X5 antibody [C3], C-term	Rb pAb	Hu	ICC/IF, IHC-P, WB
	GTX16843	P2X6 antibody	Rb pAb	Hu, Ms, Rat	FACS, ICC/IF, IHC, WB
	GTX104288	P2X7 antibody	Rb pAb	Hu, Ms, Rat	IHC-Fr, IHC-P
	GTX16924	P2Y1 antibody	Rb pAb	Hu, Ms, Rat	FACS, ICC/IF, IHC, WB
	GTX114609	P2Y2 antibody [N3C3]	Rb pAb	Hu, Ms, Rat	ICC/IF, IP, WB
	GTX16815	P2Y4 antibody	Rb pAb	Hu, Ms, Rat	FACS, ICC/IF, IHC, IP, WB
	GTX16829	P2Y6 antibody	Rb pAb	Hu, Ms, Rat	FACS, ICC/IF, IHC, IP, WB
	C GTX108169	P2Y7/Leukotriene B4 Receptor antibody [N1], N-term	Rb pAb	Hu	WB
	C GTX108241	P2Y11 antibody [C2C3], C-term	Rb pAb	Hu, Ms	IHC-Fr, WB
GTX108143	P2Y12 antibody [N1], N-term	Rb pAb	Hu	WB	