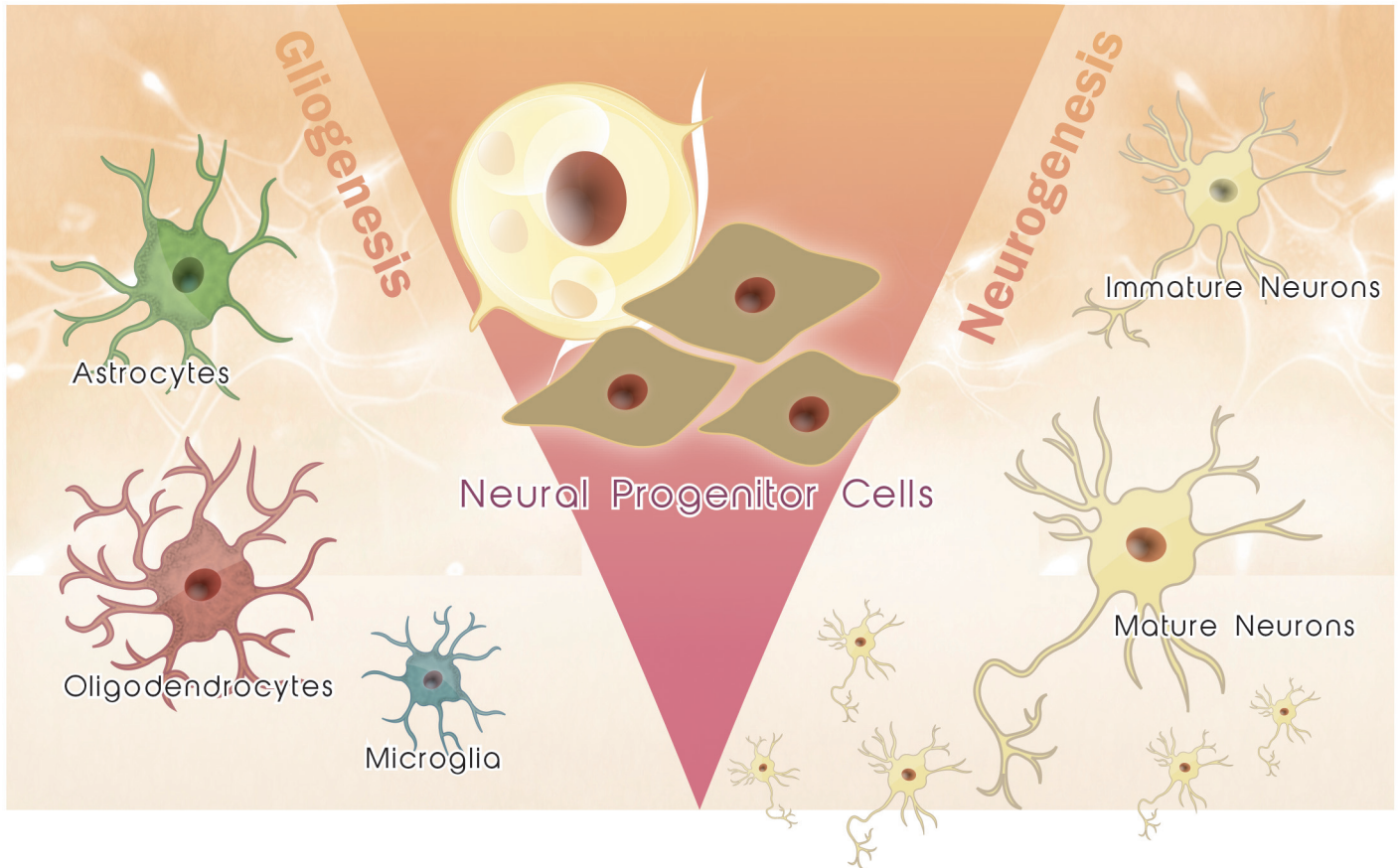


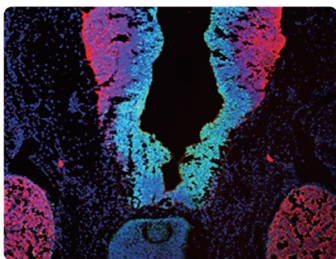
Neural Markers

www.genetex.com

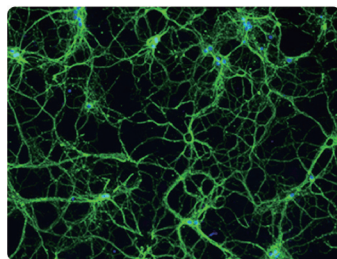
- Your Expertise
- Our Antibodies
- Accelerated Discovery



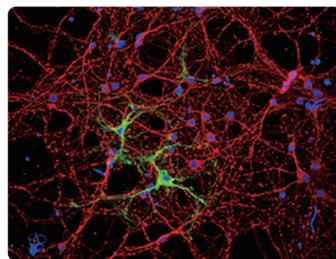
C Citation Support
K KO/KD Validation
A Comparable Abs



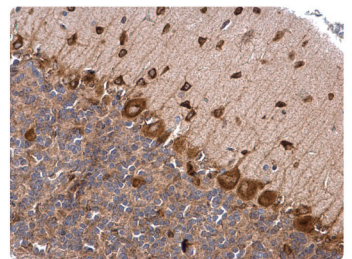
SOX2 antibody [N1C3] (GTX101507) CKA



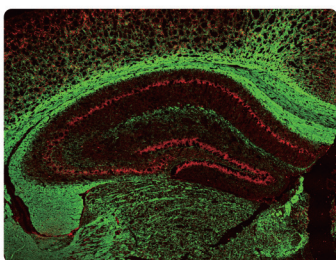
beta Tubulin 3/ Tuj1 antibody [GT11710] (GTX631836) CK



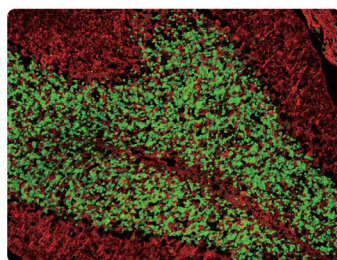
Glutamine synthetase antibody (GTX109121) CK



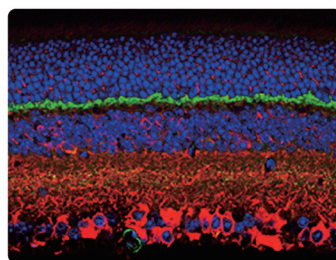
Musashi 2 antibody [N1C1] (GTX117808) CK



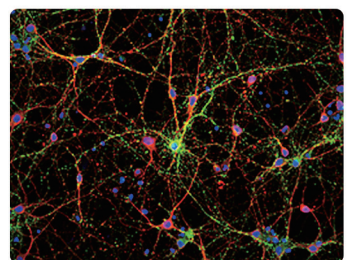
Myelin Basic Protein antibody (GTX133108) C



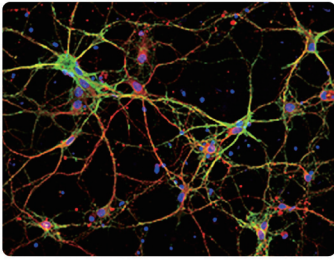
NeuN antibody (GTX132974) C



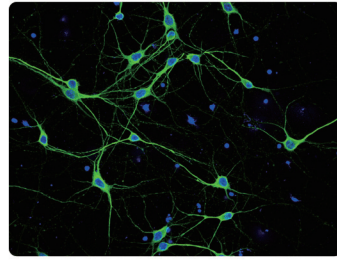
PSD95 antibody (GTX133091) C



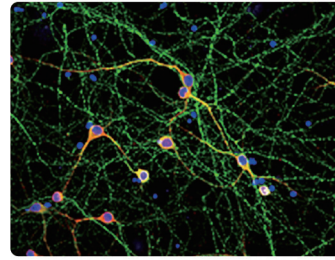
Synaptophysin antibody (GTX100865) C



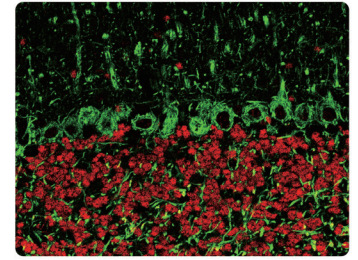
NCAM antibody (GTX133217)



MAP2 antibody (GTX133109)



Tau antibody (GTX112981)



NF-H antibody [GT114] (GTX634289)

Citation Support

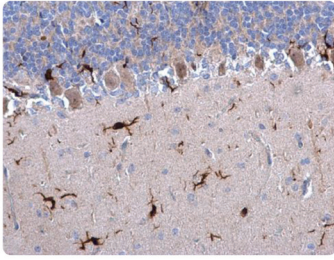
KO/KD Validation

Comparable Abs

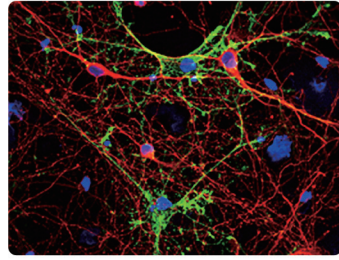
Orthogonal Validation

Protein Overexpression

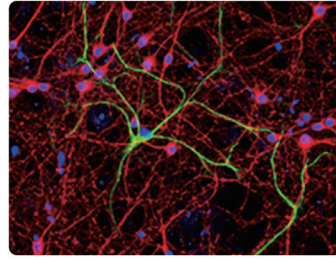
	Cat. No.	Product Name	Host & Clonality	Reactivity	Application
Neural Progenitor	GTX129189	ASCL1 antibody	Rb pAb	Hu, Rat	ICC/IF, IHC-P, WB
	GTX121467	FABP7 antibody [N1C3]	Rb pAb	Hu, Ms, Rat	IHC-Fr, WB
	GTX633391	BRG1 antibody [GT2712]	Ms mAb	Hu, Ms, Rat	ICC/IF, IHC-Fr, IHC-P, WB
	GTX114650	Brn2 antibody	Rb pAb	Hu, Ms, Rat	ICC/IF, IHC, IHC-Fr, IHC-P, IP, WB, ChIP assay
	GTX133272	CASPR antibody	Rb pAb	Ms, Rat	IHC-P, WB
	GTX101540	Musashi 1 antibody [N3C3]	Rb pAb	Hu, Ms	ICC/IF, IHC-Fr, IP, WB
	GTX117808	Musashi 2 antibody [N1C1]	Rb pAb	Hu, Ms, Rat	ICC/IF, IHC-Fr, IHC-P, IP, WB
	GTX127345	N-Cadherin antibody	Rb pAb	Hu, Ms, Rat	ICC/IF, IHC-Fr, IHC-P, WB
	GTX82992	N-Cadherin antibody [5D5]	Ms mAb	Hu, Ms, Rat	ELISA, FACS, ICC/IF, IHC-P, WB
	GTX116066	Nestin antibody	Rb pAb	Hu, Rb	WB
	GTX630201	Nestin antibody [GT623]	Ms mAb	Hu, Ms	ICC/IF, IHC-P, WB
	GTX114949	Occludin antibody	Rb pAb	Hu, Rat	ICC/IF, IHC-Fr, IHC-P, WB
	GTX634389	PAX3 antibody [GT2411]	Ms mAb	Hu	WB
	GTX113241	PAX6 antibody	Rb pAb	Hu, Ms, Rat	ICC/IF, IHC-Fr, IHC-P, IP, WB
	GTX62974	SOX1 antibody [EPR4766]	Rb mAb	Hu, Ms	FACS, ICC/IF, IHC-P, WB
	GTX627404	SOX2 antibody [GT1876]	Ms mAb	Hu, Ms, Rat, Zfsh	FACS, IHC-Fr, IP, WB
	GTX101507	SOX2 antibody [N1C3]	Rb pAb	Hu, Ms, Rat	FACS, ICC/IF, IHC-Fr, IHC-P, IP, WB
Immature Neuron	GTX134052	Doublecortin antibody	Rb pAb	Ms, Rat	ICC/IF, IHC-Fr, IHC-P, WB
	GTX133217	NCAM antibody	Rb pAb	Ms, Rat	ICC/IF, IHC-P, WB
	GTX134069	NeuroD1 antibody	Rb pAb	Hu, Ms, Rat	ICC/IF, IHC-P, WB
	GTX101553	NSE antibody [N1C1]	Rb pAb	Hu, Ms, Rat	IHC-Fr, IHC-P, WB
	GTX133249	NSE antibody	Rb pAb	Ms, Rat	ICC/IF, IHC-Fr, IHC-P, WB
	GTX104707	Stathmin 1 antibody	Rb pAb	Hu, Ms, Rat	ICC/IF, IHC-Fr, IHC-P, WB
	GTX133228	TBR1 antibody	Rb pAb	Ms, Rat	ICC/IF, IHC-P, WB
Mature Neuron	GTX130053	alpha Internexin antibody	Rb pAb	Hu, Ms, Rat	ICC/IF, IP, WB
	GTX133356	alpha Internexin antibody	Rb pAb	Ms, Rat	ICC/IF, IHC-Fr, IHC-P, WB
	GTX631836	beta Tubulin 3/ Tuj1 antibody [GT11710]	Ms mAb	Hu, Ms, Rat	ICC/IF, IHC-Fr, IHC-P, IP, WB
	GTX130245	beta Tubulin 3/ Tuj1 antibody	Rb pAb	Hu, Ms, Rat	ICC/IF, IHC-Fr, IHC-P, IP, WB
	GTX127937	GAP43 antibody	Rb pAb	Hu, Ms, Rat	ICC/IF, IHC-Fr, IHC-P, WB
	GTX11267	MAP2 antibody [HM-2]	Ms mAb	Hu, Ms, Chk, Rat, Ql, Bov	ICC/IF, IHC, IHC-Fr, IHC-P, WB
	GTX634471	MAP2 antibody [GT378]	Ms mAb	Ms, Rat	ICC/IF, IHC-P, WB
	GTX133109	MAP2 antibody	Rb pAb	Ms, Rat	ICC/IF, IHC-Fr, IHC-P, WB
	GTX30773	NeuN antibody [2Q158]	Ms mAb	Hu, Ms, Rat, Frt, Slm	ICC/IF, IHC-Fr, IHC-P, WB
	GTX132974	NeuN antibody	Rb pAb	Ms, Rat	ICC/IF, IHC-Fr, WB
	GTX133127	NeuN antibody	Rb pAb	Hu, Ms, Rat	ICC/IF, IHC-Fr, IHC-P, WB
	GTX134075	NF-L antibody	Rb pAb	Ms, Rat	IHC-Fr, IHC-P, WB
	GTX133218	NF-M antibody	Rb pAb	Ms, Rat	ICC/IF, IHC-Fr, WB
	GTX634483	NF-M antibody [GT883]	Ms mAb	Ms, Rat	IHC-Fr, IHC-P, WB
	GTX85461	NF-M antibody	Chk pAb	Hu, Ms, Rat	ICC/IF, IHC, WB
	GTX110065	NF-H antibody	Rb pAb	Hu, Ms, Rat	ICC/IF, IHC-Fr, IHC-P, WB
	GTX634289	NF-H antibody [GT114]	Ms mAb	Hu, Ms, Rat	ICC/IF, IHC-Fr, IHC-P, WB
	GTX133091	PSD95 antibody	Rb pAb	Hu, Ms, Rat	ICC/IF, IHC-Fr, IHC-P, WB
	GTX133255	PSD95 antibody	Rb pAb	Ms, Rat	ICC/IF, IHC-Fr, IHC-P, WB
	GTX80682	PSD95 antibody [7E3-1B8]	Ms mAb	Hu, Ms, Chk, Rat, Zfsh, Mrsp, NHuPrm, Rb, XI, INVT	Blocking, FACS, ICC/IF, IHC, IHC-Fr, IP, WB, ChIP assay
	GTX100865	Synaptophysin antibody	Rb pAb	Hu, Ms, Rat	ICC/IF, IHC-P, WB
	GTX633821	Synaptophysin antibody [GT1825]	Ms mAb	Ms, Rat	IHC-Fr, IHC-P, WB
	GTX112981	Tau antibody	Rb pAb	Hu, Ms, Rat	ICC/IF, IHC-Fr, IHC-P, WB
GTX100866	Tau antibody	Rb pAb	Hu, Ms	IHC-P, WB	
GTX49353	Tau antibody	Chk pAb	Hu, Ms, Rat	ICC/IF, IHC-Fr, WB	
GTX130456	Tau (phospho Ser198) antibody	Rb pAb	Hu, Ms, Rat	WB	



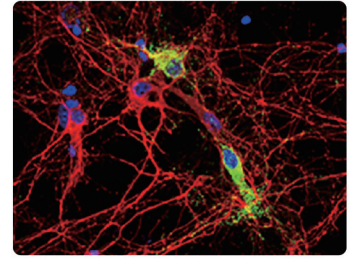
Iba1 antibody (GTX100042)



Aquaporin 4 antibody (GTX133151)



GFAP antibody (GTX108711)



MOG antibody [C2C3], C-term (GTX106283)

Citation Support

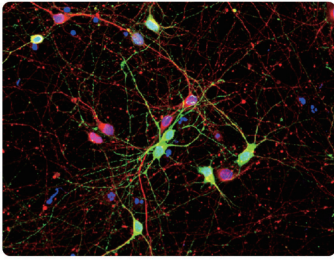
KO/KD Validation

Comparable Abs

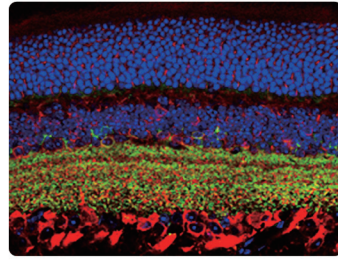
Orthogonal Validation

Protein Overexpression

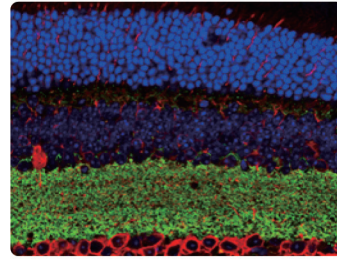
	Cat. No.	Product Name	Host & Clonality	Reactivity	Application
Interneuron	GTX130856	Calbindin antibody	Rb pAb	Ms, Rat	ICC/IF, IHC-Fr, IHC-P, WB
	GTX103261	Calretinin antibody	Rb pAb	Hu, Ms, Rat	ICC/IF, IHC-Fr, IHC-P, WB
	GTX134110	Parvalbumin antibody	Rb pAb	Ms, Rat	IHC-Fr, WB
	GTX11427	Parvalbumin antibody	Rb pAb	Hu, Ms, Rat, Zfsh, S urc	ELISA, ICC/IF, IHC, IHC-P, IP, WB, IHC-Wm
	GTX133119	Somatostatin antibody	Rb pAb	Ms, Rat	IHC-Fr, IHC-P
	GTX71935	Somatostatin antibody [SOM-018]	Ms mAb	Hu, Ms, Rat	ICC/IF, IHC, IHC-Fr, IHC-P
	GTX133138	Neuropeptide Y antibody	Rb pAb	Ms, Rat	IHC-Fr, IHC-P
	GTX10980	Neuropeptide Y antibody	Rb pAb	Hu, Ms, Pig, Rat, Shp	IHC-Fr
	GTX133219	Nkx2.2 antibody	Rb pAb	Hu, Rat	ICC/IF, IHC-Fr, WB
	GTX129461	VIP antibody	Rb pAb	Hu, Ms, Rat	IHC-P, WB
Microglia	GTX76060	CD11b antibody [OX-42]	Ms mAb	Rat	FACS, ICC/IF, IHC-Fr, IP
	GTX134007	C1qA antibody	Rb pAb	Ms, Rat	IHC-P, WB
	GTX628507	CD45 antibody [GT0014]	Ms mAb	Hu, Ms, Rat	FACS, ICC/IF, WB
	GTX116018	CD45 antibody	Rb pAb	Hu, Ms, Rat, Rb	FACS, ICC/IF, WB
	GTX26640	F4/80 antibody [CI:A3-1]	Rat mAb	Hu, Ms	EM, FACS, ICC/IF, IHC, IHC-Fr, IHC-P, IP, RIA, WB, IHC-R
	GTX101895	F4/80 antibody [C2C3], C-term	Rb pAb	Hu, Ms, Rat	IHC-P, WB
	GTX100042	Iba1 antibody	Rb pAb	Hu, Ms, Rat	FACS, ICC/IF, IHC, IHC-Fr, IHC-P, WB
	GTX101495	Iba1 antibody	Rb pAb	Hu, Ms, Rat	FACS, ICC/IF, IHC, IHC-Fr, IHC-P, IP, WB
	GTX632426	Iba1 antibody [GT10312]	Ms mAb	Hu, Ms, Rat	ICC/IF, IHC-Fr, IHC-P, WB
	GTX130246	iNOS antibody	Rb pAb	Ms, Rat	ICC/IF, IHC-P, WB
GTX60599	iNOS antibody [4E5]	Ms mAb	Hu, Ms, Rat	ELISA, FACS, IHC-P, WB	
Oligodendrocyte	GTX103954	CNPase antibody	Rb pAb	Hu, Ms, Rat	IHC-Fr, IHC-P, WB
	GTX72341	CNPase antibody [11-5B]	Ms mAb	Hu, Ms, Dog, Mk, Pig, Rat, Cat, Goat, Rb, Shp, Bov	ICC/IF, IHC, IHC-P, WB
	GTX114542	MAG antibody	Rb pAb	Hu, Ms, Rat	IHC-Fr, IHC-P, WB
	GTX133108	Myelin basic Protein antibody	Rb pAb	Hu, Ms, Rat	IHC, IHC-Fr, IHC-P, WB
	GTX634292	Myelin basic Protein antibody [GT3412]	Ms mAb	Ms, Rat	IHC-Fr, IHC-P, WB
	GTX106283	MOG antibody [C2C3], C-term	Rb pAb	Ms, Rat	ICC/IF, IHC-Fr, WB
	GTX104823	OLIG1 antibody [C2C3], C-term	Rb pAb	Hu, Ms, Rat	ICC/IF, IHC-Fr, WB
	GTX132732	OLIG2 antibody	Rb pAb	Hu, Ms, Pig, Rat	ICC/IF, IHC-Fr, IHC-P, WB
Astrocyte	GTX114599	OMG antibody	Rb pAb	Hu, Ms, Rat	IHC-P, WB
	GTX131047	ALDH1L1 antibody	Rb pAb	Ms, Rat	IHC-Fr, WB
	GTX102284	Aldolase C antibody [N1C1]	Rb pAb	Hu, Ms, Rat	IHC-Fr, WB
	GTX133151	Aquaporin 4 antibody	Rb pAb	Ms, Rat	ICC/IF, IHC-Fr, IHC-P, WB
	GTX106424	Coronin 1A antibody [C3], C-term	Rb pAb	Hu, Ms, Rat	ICC/IF, IHC-Fr, IHC-P, WB
	GTX115727	Coronin 1C antibody [C1C3]	Rb pAb	Hu, Ms	ICC/IF, IHC-P, WB
	GTX134059	EAAT1 antibody	Rb pAb	Hu, Ms, Rat	IHC-Fr, IHC-P, WB
	GTX134060	EAAT1 antibody	Rb pAb	Ms, Rat	ICC/IF, IHC-Fr, IHC-P, WB
	GTX134062	EAAT2 antibody	Rb pAb	Ms, Rat	IHC-P, WB
	GTX100850	GFAP antibody	Rb pAb	Hu, Ms, Rat	ICC/IF, IHC-Fr, IHC-P, WB
	GTX108711	GFAP antibody	Rb pAb	Hu, Ms, Rat	ICC/IF, IHC-Fr, IHC-P, WB
	GTX109121	Glutamine synthetase antibody	Rb pAb	Hu, Ms, Rat	ICC/IF, IHC-Fr, IHC-P, IP, WB
	GTX630654	Glutamine synthetase antibody [GT1055]	Ms mAb	Hu, Ms, Rat	ICC/IF, IHC-Fr, IHC-P, WB
	GTX630657	Glutamine synthetase antibody [GT7711]	Ms mAb	Hu, Ms, Rat	ICC/IF, IHC-Fr, WB
	GTX100454	IGFBP3 antibody [N2C3]	Rb pAb	Hu, Ms, Rat	IHC-Fr, WB
GTX129573	S100 beta antibody	Rb pAb	Hu, Ms, Rat, Squirrel	ICC/IF, IHC-Fr, IHC-P, WB	
GTX11179	S100 beta antibody [SH-B4]	Ms mAb	Hu, Dog, Pig, Rat, Cat, Goat, Rb, Shp, Bov	ELISA, ICC/IF, IHC-Fr, IHC-P	



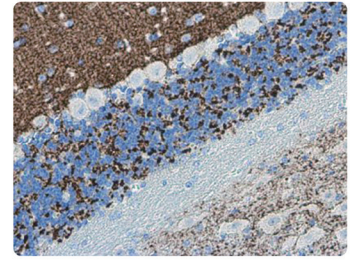
GABA antibody (GTX125988)



GAD65 antibody (GTX133156)



VGAT antibody [N1N2], N-term (GTX101908)



VGLuT1 antibody (GTX133148)

Citation Support

KO/KD Validation

Comparable Abs

Protein Overexpression

	Cat. No.	Product Name	Host & Clonality	Reactivity	Application
Cholinergic Neuron	GTX113164	Choline Acetyltransferase antibody [N1N3]	Rb pAb	Hu, Ms, Rat	ICC/IF, IHC-Fr, IHC-P, WB
	GTX101648	AChE antibody	Rb pAb	Hu, Ms, Rat	ICC/IF, IHC-Fr, IHC-P, WB
	GTX133251	Vesicular Acetylcholine Transporter antibody	Rb pAb	Ms	IHC-Fr, IHC-P, WB
Dopaminergic Neuron	GTX133350	DARPP-32 antibody	Rb pAb	Ms, Rat	ICC/IF, IHC-Fr, IHC-P, WB
	GTX133336	DARPP-32 antibody	Rb pAb	Ms, Rat	ICC/IF, IHC-Fr, WB
	GTX133152	Dopamine Transporter antibody	Rb pAb	Ms, Rat	ICC/IF, IHC-P, WB
	GTX101616	Dopamine beta Hydroxylase antibody	Rb pAb	Hu, Ms, Rat	IHC-P, WB
	GTX100309	FOXA2 antibody	Rb pAb	Hu, Ms	ICC/IF, IHC-Fr, WB
	GTX129831	LMX1B antibody	Rb pAb	Ms, Rat	IHC-Fr, WB
	GTX133225	Nurr1 antibody	Rb pAb	Ms, Rat	WB
	GTX102424	Tyrosine Hydroxylase antibody [N1C1]	Rb pAb	Hu, Ms, Rat, Zfsh	ICC/IF, IHC-Fr, IHC-P, WB, IHC-Wm
GABAergic Neuron	GTX113016	Tyrosine Hydroxylase antibody	Rb pAb	Hu, Ms, Rat, Vole	ICC/IF, IHC-Fr, IHC-P, WB
	GTX634481	Tyrosine Hydroxylase antibody [GT234]	Ms mAb	Ms, Rat	IHC-P, WB
	GTX125988	GABA antibody	Rb pAb	Hu, Ms, Dm, Rat	Dot, ICC/IF, IHC, IHC-Fr, IHC-P
	GTX133150	GABA Transporter 1 / GAT1 antibody	Rb pAb	Ms, Rat	ICC/IF, IHC-Fr, IHC-P, WB
	GTX100281	GAD65 antibody [C2C3], C-term	Rb pAb	Hu, Ms, Rat	ICC/IF, IHC-Fr, IHC-P, WB
	GTX133096	GAD65 antibody	Rb pAb	Hu, Rat	IHC-Fr, WB
	GTX133156	GAD65 antibody	Rb pAb	Hu, Ms, Rat	IHC-P, WB
	GTX101881	GAD67 antibody	Rb pAb	Hu, Ms, Rat	ICC/IF, IHC-Fr, IHC-P, WB
Glutamatergic Neuron	GTX633816	GAD67 antibody [GT1982]	Ms mAb	Ms	WB
	GTX101908	VGAT antibody [N1N2], N-term	Rb pAb	Hu, Ms, Rat	ICC/IF, IHC-Fr, IHC-P, WB
	GTX131263	Glutaminase C antibody	Rb pAb	Hu, Ms	ICC/IF, IHC-P, IP, WB
	GTX632317	Glutaminase C antibody [GT3211]	Ms mAb	Hu, Ms	ICC/IF, IHC-P, WB
	GTX109121	Glutamine synthetase antibody	Rb pAb	Hu, Ms, Rat	ICC/IF, IHC-Fr, IHC-P, IP, WB
	GTX630654	Glutamine synthetase antibody [GT1055]	Ms mAb	Hu, Ms, Rat	ICC/IF, IHC-Fr, IHC-P, WB
	GTX630657	Glutamine synthetase antibody [GT7711]	Ms mAb	Hu, Ms, Rat	ICC/IF, IHC-Fr, WB
	GTX133148	vGluT1 antibody	Rb pAb	Ms, Rat	ICC/IF, IHC-Fr, IHC-P, WB
	GTX133142	vGluT2 antibody	Rb pAb	Ms, Rat	ICC/IF, IHC-Fr, WB
	GTX134103	vGluT3 antibody	Rb pAb	Ms	WB
	GTX133097	NMDAR1 antibody	Rb pAb	Ms, Rat	ICC/IF, IHC-Fr, IHC-P, WB
	GTX103558	NMDAR2A antibody	Rb pAb	Hu, Ms, Rat	ICC/IF, IHC-P, WB
GTX109713	NMDAR2B antibody [C2C3], C-term	Rb pAb	Hu, Ms, Rat	ICC/IF, WB	
GTX130184	NMDAR2B antibody	Rb pAb	Ms, Rat	ICC/IF, IHC-P, WB	
GTX130183	NMDAR2B (phospho Tyr1472) antibody	Rb pAb	Ms, Rat	WB	
Serotonergic Neuron	GTX31099	Serotonin antibody [5-HT-H209]	Ms mAb	Hu, Ms, Chk, Dm, Pig, Rat, RMK	ICC/IF, IHC, IHC-Fr, IHC-P
	GTX133101	Serotonin Transporter antibody	Rb pAb	Rat	ICC/IF, WB
	GTX31103	Serotonin Transporter antibody, Internal	Gt pAb	Hu, Rat	ICC/IF, WB
	GTX109027	TPH1 antibody	Rb pAb	Hu	ICC/IF, WB
	GTX101962	TPH2 antibody [N3C3]	Rb pAb	Hu, Ms	WB