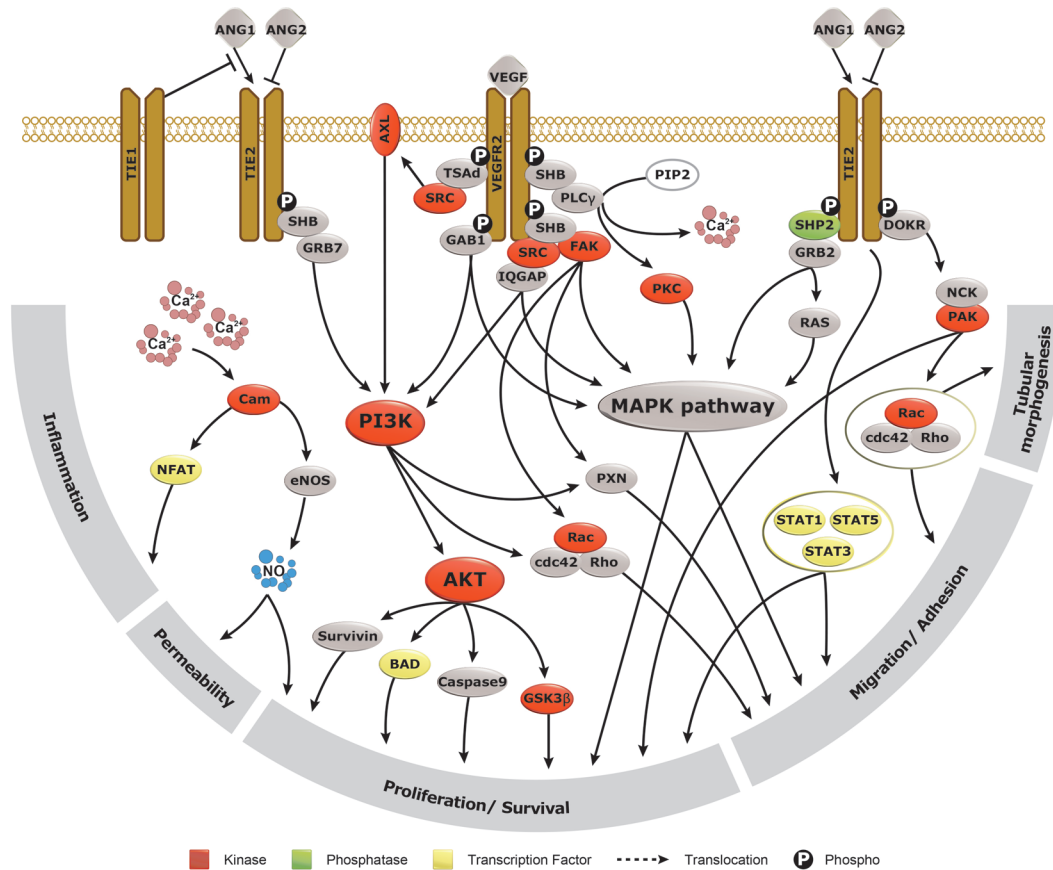


VEGF/ ANG Pathway

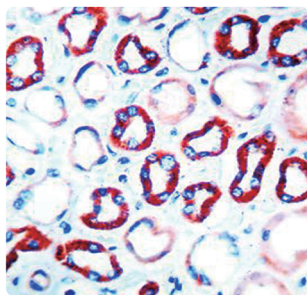
- Your Expertise
- Our Antibodies
- Accelerated Discovery

www.genetex.com

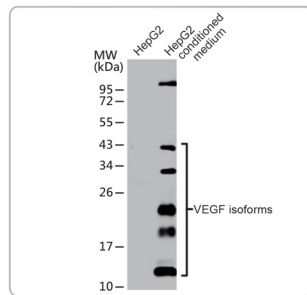


Angiogenesis entails the generation of new blood vessels from pre-existing vasculature. It is an intricate process tightly regulated by input from pro- and anti-angiogenic factors. In the normal adult, the balance between these inducers and inhibitors maintains a quiescent state that nevertheless is capable of rapid changes in response to microenvironmental disruptions secondary to wounds, hypoxia, or inflammation. Perturbations of this balance in various chronic pathological conditions and tumors can lead to inappropriate angiogenesis or neovascularization. The mechanistic features underlying angiogenesis are complex, but the clinical importance of being able to modulate this process means that this will remain a compelling and dynamic field of research.

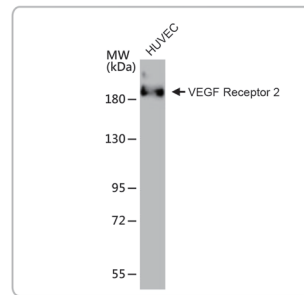
Citation Support



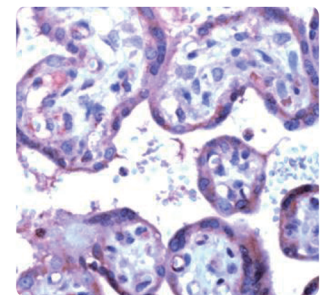
VEGF antibody (GTX102643) ©



VEGF antibody [VG1] (GTX21316) ©



VEGF Receptor 2 antibody (GTX129943) ©



VEGF Receptor 2 antibody (GTX15291) ©

Hot Product

 Citation Support
  KO/KD Validation
  Comparable Abs
  IP/MS Analysis
  Orthogonal Validation
  Protein Overexpression

Cat. No.	Product Name	Host & Clonality	Reactivity	Application
 GTX102643	VEGF antibody	Rb pAb	Hu, Ms, Rat	IHC-P, WB
 GTX21316	VEGF antibody [VG1]	Ms mAb	Hu, Ms, Rat	ELISA, ICC/IF, IHC-Fr, IHC-P, WB
 GTX128969	VEGF Receptor 1 antibody	Rb pAb	Hu	WB
 GTX22350	VEGF Receptor 1 antibody	Rb pAb	Hu, Ms, Rat	IHC, IHC-Fr, IHC-P
 GTX129943	VEGF Receptor 2 antibody	Rb pAb	Hu	WB
 GTX50432	VEGF Receptor 2 antibody	Rb pAb	Hu, Ms, Rat	ICC/IF, IHC-P, WB
 GTX50153	VEGF Receptor 2 (phospho Tyr951) antibody	Rb pAb	Hu, Ms, Rat	ICC/IF, IHC-P, WB
 GTX100807	VEGF Receptor 3 antibody	Rb pAb	Hu, Ms	WB
  GTX113574	VEGFC antibody	Rb pAb	Hu, Ms, Rat	IHC-P, WB
 GTX100805	VEGFD antibody [N3C3]	Rb pAb	Hu	IHC-P, WB
  GTX107818	TIE1 antibody	Rb pAb	Hu, Ms	IHC-P, WB
 GTX107505	TIE2 antibody	Rb pAb	Hu	IHC-P, WB
  GTX121937	AKT antibody [N3C2], Internal	Rb pAb	Hu, Ms, Rat	ICC/IF, IHC, IHC-Fr, IHC-P, IP, WB
  GTX128414	AKT (phospho Ser473) antibody	Rb pAb	Hu, Ms	IP, WB
 GTX28451	Angiopoietin 1 antibody	Rb pAb	Hu, Ms	ELISA, IHC-P, WB
 GTX100991	Angiopoietin 2 antibody	Rb pAb	Hu	ICC/IF, IHC-P, WB
 GTX100928	Angiopoietin 2 antibody	Rb pAb	Hu, Ms	IHC-P, WB
  GTX129407	AXL antibody	Rb pAb	Hu, Ms	ELISA, IHC-P, WB
 GTX632645	CD31 antibody [GT0010]	Hamster mAb	Ms, Rat	FACS, IHC-P
 GTX110602	CD31 antibody [N3C2], Internal	Rb pAb	Hu	IHC-P, WB
 GTX20218	CD31 antibody [WM59]	Ms mAb	Hu, Ms, Chk, RMK, CIMK	FACS, ICC/IF, IHC, IHC-P, IP
 GTX100904	CDC42 antibody	Rb pAb	Ms, Rat	IHC-P, WB
  GTX100656	COX2 antibody [C3], C-term	Rb pAb	Hu, Ms, Rat	IHC-P, WB
 GTX129843	eNOS antibody	Rb pAb	Hu	ICC/IF, WB
 GTX83305	eNOS antibody [6H2]	Ms mAb	Hu	ELISA, IHC, IHC-P
  GTX129058	eNOS (phospho Ser1177) antibody	Rb pAb	Hu	ICC/IF, WB
   GTX113094	ERK2 antibody [N2C3]	Rb pAb	Hu, Ms, Pig, Rat	IHC-P, IP, WB
  GTX132140	FAK (phospho Tyr576) antibody	Rb pAb	Hu	ICC/IF, WB
 GTX12474	FGF1 antibody (Biotin)	Rb pAb	Hu	ELISA, WB
 GTX12476	FGF2 antibody (Biotin)	Rb pAb	Hu	ELISA, WB
 GTX111253	GAB1 antibody	Rb pAb	Hu, Ms	IHC-P, WB
 GTX114226	GAB2 antibody [N1C1]	Rb pAb	Hu	WB
 GTX39987	Integrin alpha V + beta 5 antibody [P1F6]	Ms mAb	Hu, Chk	ELISA, FACS, ICC/IF, IHC-Fr, IP
   GTX100789	Integrin alpha V antibody [C2C3], C-term	Rb pAb	Hu, Ms	ELISA, IHC-P, WB
 GTX111672	Integrin beta 3 antibody [N2C1], Internal	Rb pAb	Hu	WB
  GTX104577	MMP2 antibody	Rb pAb	Hu, Ms	ICC/IF, IHC-P, IP, WB
 GTX100706	MMP3 antibody [N1], N-term	Rb pAb	Hu	ICC/IF, IHC-P
  GTX100458	MMP9 antibody [N2C1], Internal	Rb pAb	Hu, Bov	ICC/IF, IHC-P, WB
  GTX127932	NFAT1 antibody	Rb pAb	Hu, Ms	ICC/IF, IP, WB
  GTX22722	NFAT1 antibody [25A10.D6.D2]	Ms mAb	Hu, Ms, Rat	FACS, GSA, ICC/IF, IHC, IHC-F, IHC-Fr, IHC-P, IP, WB, ChIP assay
 GTX28925	NOTCH1 antibody	Rb pAb	Hu, Ms, Rat	ELISA, ICC/IF, IHC-P, Neut, WB
 GTX101593	NOTCH2 antibody [C2], C-term	Rb pAb	Hu, Ms	WB, ChIP-seq
 GTX127947	Neuropilin 1 antibody	Rb pAb	Ms, Rat	IHC-P, WB
 GTX102397	Neuropilin 2 antibody [N2N3]	Rb pAb	Hu	WB
  GTX110720	p38 MAPK antibody [N1C3-2]	Rb pAb	Hu, Ms, Rat	ICC/IF, IHC-P, WB
   GTX125891	Paxillin antibody	Rb pAb	Hu, Ms, Rat	ICC/IF, IHC-P, IP, WB
   GTX132152	Paxillin (phospho Tyr118) antibody	Rb pAb	Hu	ICC/IF, WB
   GTX132154	Paxillin (phospho Tyr31) antibody	Rb pAb	Hu	ICC/IF, WB
 GTX107903	PDGF Receptor alpha antibody [N2C2], Internal	Rb pAb	Hu, Ms, Rat	WB
 GTX100683	PDGFB antibody	Rb pAb	Hu	IHC-P, WB
 GTX100462	PI3K p110 alpha antibody	Rb pAb	Hu, Ms	ICC/IF, IHC-P, WB
 GTX111173	PI3K p110 beta antibody [N3C2], Internal	Rb pAb	Hu, Ms, Rat	ICC/IF, IHC-P, WB
 GTX74710	PI3K p85 beta antibody [T15]	Ms mAb	Hu, Mk, Bov	IHC-Fr, IP, WB
 GTX50858	PI3K p85/p55 (phospho Tyr467/199) antibody	Rb pAb	Hu, Ms, Rat	WB
  GTX108953	PI3-Kinase p150 antibody [C1C3]	Rb pAb	Hu	IP, WB
 GTX111293	PLCG2 antibody [N1N2], N-term	Rb pAb	Hu, Ms	ICC/IF, IHC-P, WB
 GTX50225	PLCG2 (phospho Tyr753) antibody	Rb pAb	Hu, Ms, Rat	ICC/IF, WB
 GTX37550	Semaphorin 3A antibody	Rb pAb	Hu, Ms, Rat	IHC, IHC-P, WB
  GTX129909	TGF beta Receptor 2 antibody	Rb pAb	Hu	WB


 e: info@stratech.co.uk
 w: stratech.co.uk/genetex
 t: +44 (0) 1638 782600

GeneTex

International
USA

Tel: 886.3.6208988
Tel: 1.949.553.1900

Toll-free: 1.877.436.3839

www.genetex.com

PD-V002-190225