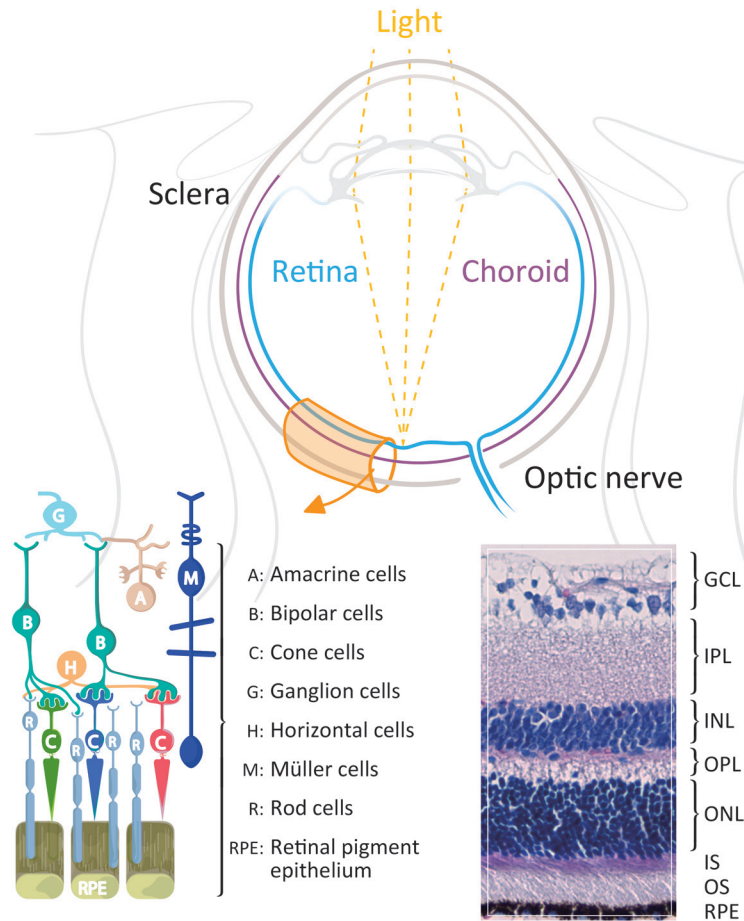


Vision and Retina

www.genetex.com

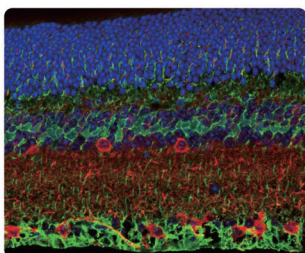
- Your Expertise
- Our Antibodies
- Accelerated Discovery





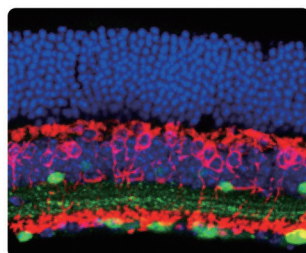
The retina is a light-sensitive layer of tissue on the back of the eye situated around the optic nerve. Light focused by the lens onto the retina initiates a cascade of signals that are relayed to the brain via the optic nerve to allow visual perception. Structurally, the retina consists of three layers of nerve cell bodies (including photoreceptor cells, bipolar cells, amacrine cells, horizontal cells, and ganglion cells), two layers of synapses, and the layer of pigmented epithelial cells.



GeneTex is proud to offer an outstanding selection of antibodies for vision and retina research. We offer reliable IHC-validated and/or ICC/IF-validated antibodies to facilitate your research efforts in this exciting field. Please see the highlighted antibodies below.

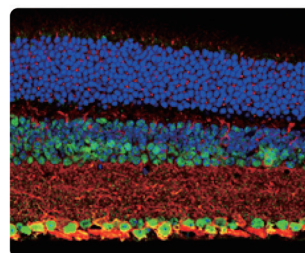
 Citation Support  KO/KD Validation  Protein Overexpression




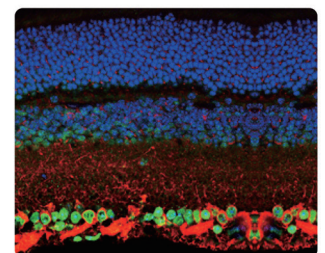
Glutamine synthetase antibody (GTX109121)  




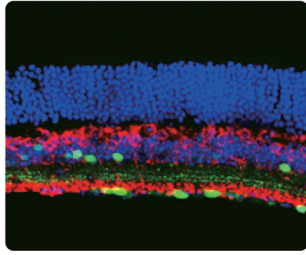
Calretinin antibody (GTX103261)  



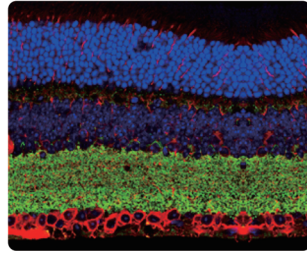
NeuN antibody (GTX133127) 



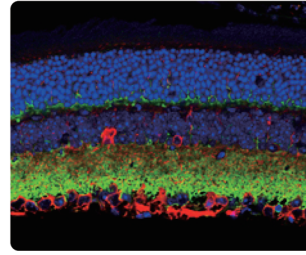
OTX2 antibody (GTX133210) 



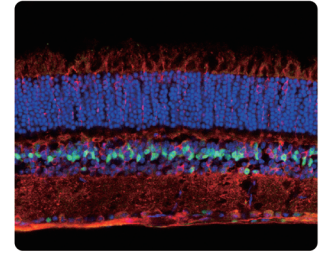
Choline Acetyltransferase antibody [N1N3] (GTX113164)



VGAT antibody [N1N2], N-term (GTX101908)

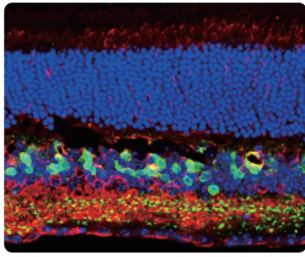


VAMP2 antibody (GTX133241)

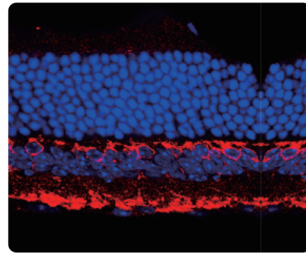


LHX2 antibody (GTX129241)

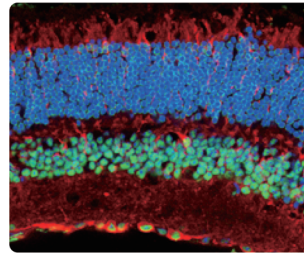
| Cat. No. | Product Name | Host & Clonality | Reactivity | Application |
|-----------|---|------------------|-------------------------|--|
| GTX100479 | ABAT antibody | Rb pAb | Hu, Ms, Rat | ICC/IF, IHC-Fr, IHC-P, WB |
| GTX82741 | ABCA4 (Rim Protein) antibody [3F4] | Ms mAb | Hu, Ms, XI, Bov | IHC, WB |
| GTX107815 | Activin Receptor Type IA antibody | Rb pAb | Ms, Rat | IHC-Fr, WB |
| GTX112391 | ALDH3A1 antibody [N1C2] | Rb pAb | Hu, Ms, Bov | IHC-Fr, WB |
| GTX88085 | ALDH3A1 antibody, C-term | Gt pAb | Hu, Ms | IHC-P, WB |
| GTX50077 | alpha A Crystallin antibody [c9F2] | Ms mAb | Hu, Ms, Rat | ELISA, WB |
| GTX32168 | alpha B Crystallin (phospho Ser19) antibody | Rb pAb | Hu, Ms, Rat | WB |
| GTX88907 | alpha B Crystallin antibody, Internal | Gt pAb | Ms, Rat | WB |
| GTX628802 | alpha Tubulin antibody [GT114] | Ms mAb | Hu, Ms, Dm, Rat, Zfsh | ICC/IF, IHC-Fr, IHC-P, WB |
| GTX113564 | AP2 alpha antibody | Rb pAb | Hu, Ms, Rat | IP, WB |
| GTX54297 | Aquaporin 0 antibody | Rb pAb | Hu, Ms, Rat | IHC-P, WB |
| GTX129391 | ATOH7 antibody | Rb pAb | Hu, Ms | IHC-P, WB |
| GTX101741 | ATP5A1 antibody [C2C3], C-term | Rb pAb | Hu, Ms, Rat | ICC/IF, IHC-Fr, IHC-P, WB |
| GTX30087 | BCL2L2 antibody | Rb pAb | Hu, Ms | IHC-P, WB |
| GTX132621 | BDNF antibody | Rb pAb | Hu, Ms, Rat | IHC-P, WB |
| GTX109207 | beta A3 Crystallin antibody [N1C3] | Rb pAb | Ms | WB |
| GTX32540 | Beta crystallin S antibody | Rb pAb | Ms, Rat | WB |
| GTX631836 | beta Tubulin 3/ Tuj1 antibody [GT11710] | Ms mAb | Hu, Ms, Rat | ICC/IF, IHC-Fr, IHC-P, IP, WB |
| GTX102453 | BMPR1B antibody [N3C3] | Rb pAb | Hu, Ms, Rat, Bov | IHC-Fr, IHC-P, WB |
| GTX130856 | Calbindin antibody | Rb pAb | Ms, Rat | ICC/IF, IHC-Fr, IHC-P, WB |
| GTX103261 | Calretinin antibody | Rb pAb | Hu, Ms, Rat | ICC/IF, IHC-Fr, IHC-P, WB |
| GTX130072 | CD90 antibody | Rb pAb | Hu, Ms | IHC-Fr, WB |
| GTX113164 | Choline Acetyltransferase antibody [N1N3] | Rb pAb | Hu, Ms, Rat | ICC/IF, IHC-Fr, IHC-P, WB |
| GTX16141 | CHX10 antibody | Shp pAb | Hu, Ms, Rat, Bov | WB |
| GTX53531 | CLCN4 antibody | Rb pAb | Hu, Chk | ICC/IF, IHC-Fr, WB |
| GTX53514 | COL9A1 antibody | Rb pAb | Hu, Ms, Rat | IHC-P, WB |
| GTX101735 | Contactin 1 antibody | Rb pAb | Ms | IHC-Fr |
| GTX133205 | Contactin 1 antibody | Rb pAb | Ms, Rat | IHC-Fr, WB |
| GTX133206 | Contactin 1 antibody | Rb pAb | Ms, Rat | IHC-Fr, WB |
| GTX124188 | CORD2 antibody | Rb pAb | Hu, Ms | IHC-P, WB |
| GTX33111 | CORD2 antibody | Rb pAb | Ms | WB |
| GTX85889 | CRABP1 antibody [AT1A1] | Ms mAb | Hu, Ms | ELISA, IHC-P, WB |
| GTX50013 | CRABP1 antibody [AT1A1] | Ms mAb | Hu, Ms | ELISA, FACS, ICC/IF, WB |
| GTX101551 | CRABP2 antibody [N1C3] | Rb pAb | Hu, Ms, Rat | ICC/IF, IHC-P, WB |
| GTX15051 | CRALBP antibody [B2] | Ms mAb | Hu, Ms, Rat, NHuPm, Bov | ELISA, FACS, ICC/IF, IHC, IHC-Fr, IP, WB |
| GTX113541 | CRALBP antibody [N2C3] | Rb pAb | Hu, Ms | ICC/IF, WB |
| GTX112846 | CREB antibody | Rb pAb | Hu, Ms, Rat | ICC/IF, IHC-Fr, IHC-P, WB |
| GTX118270 | CRYZ antibody [N1C1] | Rb pAb | Hu, Ms | ICC/IF, IHC-P, WB |
| GTX108804 | DLX1 antibody [N1C3-2] | Rb pAb | Hu, Ms, Rat | IHC-Fr, WB |
| GTX100200 | FOXL2 antibody [C3], C-term | Rb pAb | Ms | WB |
| GTX133095 | GAD65 antibody | Rb pAb | Ms | IHC-Fr |
| GTX133156 | GAD65 antibody | Rb pAb | Hu, Ms, Rat | IHC-P, WB |
| GTX100281 | GAD65 antibody [C2C3], C-term | Rb pAb | Hu, Ms, Rat | ICC/IF, IHC-Fr, IHC-P, WB |
| GTX101881 | GAD67 antibody | Rb pAb | Hu, Ms, Rat | ICC/IF, IHC-Fr, IHC-P, WB |
| GTX113190 | GAD67 antibody | Rb pAb | Hu, Ms, Rat | ICC/IF, IHC-P, WB |
| GTX633816 | GAD67 antibody [GT1982] | Ms mAb | Ms | WB |
| GTX100850 | GFAP antibody | Rb pAb | Hu, Ms, Rat | ICC/IF, IHC-Fr, IHC-P, WB |



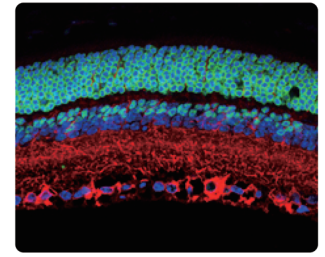
SCGN antibody [N2C3] (GTX115443)



PKC alpha antibody (GTX130453)

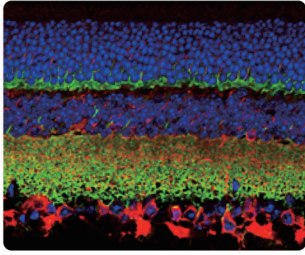


CREB antibody (GTX112846)

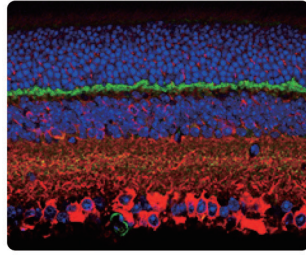


OTX3/CORD2 antibody (GTX124188)

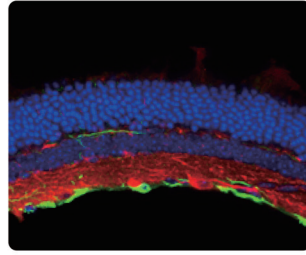
| Cat. No. | Product Name | Host & Clonality | Reactivity | Application |
|-----------|--|------------------|-------------------------------------|-------------------------------|
| GTX108711 | GFAP antibody | Rb pAb | Hu, Ms, Rat | ICC/IF, IHC-Fr, IHC-P, WB |
| GTX109121 | Glutamine synthetase antibody | Rb pAb | Hu, Ms, Rat | ICC/IF, IHC-Fr, IHC-P, IP, WB |
| GTX630654 | Glutamine synthetase antibody [GT1055] | Ms mAb | Hu, Ms, Rat | ICC/IF, IHC-Fr, IHC-P, WB |
| GTX630657 | Glutamine synthetase antibody [GT7711] | Ms mAb | Hu, Ms, Rat | ICC/IF, IHC-Fr, WB |
| GTX105960 | GNAT1 antibody [N1C3] | Rb pAb | Hu, Ms | IHC-Fr, WB |
| GTX114440 | GNAT2 antibody [N3C3] | Rb pAb | Ms | IHC-Fr |
| GTX23433 | GNB1 antibody | Rb pAb | Ms, Dm, Shp, Bov | WB |
| GTX114442 | GNB1 antibody | Rb pAb | Hu, Ms, Rat | ICC/IF, IHC-P, IP, WB |
| GTX22776 | GRK1 antibody [D11] | Ms mAb | Hu, Ms, Bov | ICC/IF, IHC-Fr, IP, WB |
| GTX22775 | GRK1 antibody [G8] | Ms mAb | Hu, Ms, Chk, Dog, Rat, Bov | ICC/IF, IHC, IP, WB |
| GTX32674 | IL17A antibody | Rb pAb | Hu, Ms, Mk, Rat | IHC-Fr, WB |
| GTX102807 | Islet 1 antibody | Rb pAb | Hu, Ms, Rat | ICC/IF, IHC-Fr, IHC-P, WB |
| GTX133130 | KCC2 antibody | Rb pAb | Hu, Ms, Rat | ICC/IF, IHC-P, WB |
| GTX129241 | LHX2 antibody | Rb pAb | Hu, Ms, Rat | IHC-Fr, WB |
| GTX129215 | LIM1 antibody | Rb pAb | Ms, Rat | IHC-Fr, IHC-P, WB |
| GTX120233 | MEGF11 antibody | Rb pAb | Ms | WB |
| GTX19383 | Melanopsin antibody | Rb pAb | Hu, Ms, Rat | ICC/IF, IHC-Fr, WB |
| GTX101540 | Musashi 1 antibody [N3C3] | Rb pAb | Hu, Ms | ICC/IF, IHC-Fr, IP, WB |
| GTX117808 | Musashi 2 antibody [N1C1] | Rb pAb | Hu, Ms, Rat | ICC/IF, IHC-Fr, IHC-P, IP, WB |
| GTX121928 | Nesprin 2 antibody [C3], C-term | Rb pAb | Hu, Ms | ICC/IF, IHC-Fr, IHC-P, WB |
| GTX132974 | NeuN antibody | Rb pAb | Ms, Rat | ICC/IF, IHC-Fr, WB |
| GTX133214 | NeuroD1 antibody | Rb pAb | Hu, Ms, Rat | WB |
| GTX133207 | NeuroD1 antibody | Rb pAb | Hu, Rat | IHC-Fr, WB |
| GTX110065 | NF-H antibody | Rb pAb | Hu, Ms, Rat | ICC/IF, IHC-Fr, IHC-P, WB |
| GTX114580 | NFIA antibody | Rb pAb | Hu, Ms, Rat | ICC/IF, IHC-Fr, IHC-P, WB |
| GTX41979 | Nitrotyrosine antibody [39B6] | Ms mAb | Hu, Ms, Dog, Rat | ELISA, ICC/IF, IHC-P, IP, WB |
| GTX30730 | Nitrotyrosine antibody [39B6] | Ms mAb | Hu, Ms, Dog, Rat | IHC, IHC-P, IP, WB |
| GTX133097 | NMDAR1 antibody | Rb pAb | Ms, Rat | ICC/IF, IHC-Fr, IHC-P, WB |
| GTX103558 | NMDAR2A antibody | Rb pAb | Hu, Ms, Rat | ICC/IF, IHC-P, WB |
| GTX82636 | NMDAR2A antibody | Rb pAb | Hu, Ms, Rat | IHC-Fr, IP, WB |
| GTX105741 | NPAS2 antibody [C1C3] | Rb pAb | Hu, Ms, Rat | ICC/IF, IHC-Fr, IHC-P, WB |
| GTX129917 | OPA1 antibody | Rb pAb | Hu | WB |
| GTX48589 | OPA1 antibody | Rb pAb | Hu, Ms, Chk, Pig, Rat, Zfsh, NHuPrm | IHC-P, WB |
| GTX32767 | OPA3 antibody | Rb pAb | Hu, Ms, Rat | IHC-P, WB |
| GTX108155 | Opsin 3 antibody [N1], N-term | Rb pAb | Hu, Ms | IHC-Fr, IHC-P, WB |
| GTX100173 | Opsin 5 antibody [N2C1], Internal | Rb pAb | Hu, Ms | IHC-Fr, WB |
| GTX133210 | OTX2 antibody | Rb pAb | Hu, Ms, Rat | IHC-Fr, IHC-P, WB |
| GTX133210 | OTX2 antibody | Rb pAb | Hu, Ms, Rat | IHC-Fr, IHC-P, WB |
| GTX100446 | p27 Kip1 antibody | Rb pAb | Hu, Ms | ICC/IF, IHC-Fr, IHC-P, IP, WB |
| GTX104288 | P2X7 antibody | Rb pAb | Hu, Ms, Rat | IHC-Fr, IHC-P |
| GTX133116 | PAX2 antibody | Rb pAb | Hu | WB |
| GTX113241 | PAX6 antibody | Rb pAb | Hu, Ms, Rat | ICC/IF, IHC-Fr, IHC-P, IP, WB |
| GTX89029 | PAX6 antibody, Internal | Gt pAb | Ms | WB |
| GTX113242 | PBX1 antibody | Rb pAb | Hu | IP, WB |
| GTX105260 | PBX1 antibody [N2C3] | Rb pAb | Hu | ICC/IF |
| GTX88088 | PBX1 antibody, Internal | Gt pAb | Hu, Ms, Rat | WB |
| GTX25659 | PDE6A antibody | Rb pAb | Ms, Shp, Bov | ICC/IF, IHC, WB |



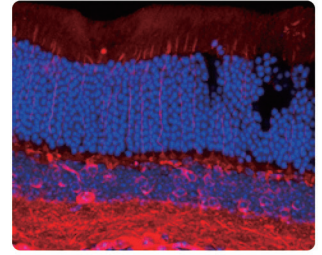
Synaptophysin antibody (GTX100865) C



PSD95 antibody (GTX133091) C



GFAP antibody (GTX108711) C P



beta Tubulin 3/ TUJ1 antibody [GT11710] (GTX631836) C K

| Cat. No. | Product Name | Host & Clonality | Reactivity | Application |
|---|---|------------------|--|--|
| GTX25663 | PDE6B antibody | Rb pAb | Hu, Ms, Bov | ICC/IF, IHC, IP, WB |
| GTX109240 | PDE6D antibody [N1C3] | Rb pAb | Hu, Ms | ICC/IF, IHC-P, WB |
| GTX114097 | PDFE antibody [N1C2] | Rb pAb | Hu, Ms | IHC-P, WB |
| C GTX128974 | PER1 antibody | Rb pAb | Hu, Rat | WB |
| GTX129688 | PER2 antibody | Rb pAb | Hu, Ms | IHC-P, WB |
| GTX631397 | PER2 antibody [GT5310] | Ms mAb | Hu | ICC/IF, WB |
| GTX131327 | Phosducin / PDC antibody | Rb pAb | Ms | IHC-P, WB |
| K GTX133936 | PKC alpha (phospho Ser657) antibody | Rb pAb | Hu, Rat | WB |
| K GTX130433 | PKC alpha (phospho Thr497) antibody | Rb pAb | Hu | WB |
| C GTX130453 | PKC alpha antibody | Rb pAb | Hu, Ms, Rat | ICC/IF, IHC-Fr, WB |
| C GTX11723 | PKC alpha antibody [133] | Ms mAb | Ms, Mamm | IHC-Fr, WB |
| K GTX130858 | PMCA1 antibody | Rb pAb | Hu, Ms, Rat | IHC-Fr, IHC-P, WB |
| K GTX130748 | POU4F3 antibody | Rb pAb | Hu, Ms | IHC-P, WB |
| GTX88096 | POU6F2 antibody, N-term | Gt pAb | Ms | WB |
| K GTX129143 | PROX1 antibody | Rb pAb | Hu, Ms, Rat | ICC/IF, WB |
| C GTX133091 | PSD95 antibody | Rb pAb | Hu, Ms, Rat | ICC/IF, IHC-Fr, IHC-P, WB |
| GTX116704 | PTBP2 antibody | Rb pAb | Hu, Ms, Rat | ICC/IF, IHC-P, WB |
| GTX88658 | RAB23 antibody, C-term | Gt pAb | Ms | WB |
| GTX22938 | RANBP2 antibody | Rb pAb | Hu, Bov | ICC/IF, IHC, WB |
| GTX114714 | RBP3 antibody [C2C3], C-term | Rb pAb | Hu, Ms | ICC/IF, IHC-P |
| C GTX118619 | RBPMS antibody | Rb pAb | Hu, Ms, Mk, Rat | ICC/IF, IHC, IHC-Fr, IHC-P, WB, IHC-Wm |
| GTX129910 | Rhodopsin antibody | Rb pAb | Hu, Ms | IHC-Fr, IHC-P, WB |
| K C GTX13826 | RPE65 antibody [401.8B11.3D9] | Ms mAb | Hu, Ms, Chk, Dog, Pig, Rat, Bov, Xenopus | FACS, ICC/IF, IHC-Fr, IHC-P, WB, MS |
| C GTX103472 | RPE65 antibody [N1C3] | Rb pAb | Hu, Ms | ICC/IF, WB |
| P C GTX129573 | S100 beta antibody | Rb pAb | Hu, Ms, Rat, Squirrel | ICC/IF, IHC-Fr, IHC-P, WB |
| GTX15617 | S-arrestin antibody [PDS1] | Ms mAb | Hu, Pig, Rat, Goat, Shp, Bov | ELISA, IHC, IHC-P, IP, WB |
| GTX115443 | SCGN antibody [N2C3] | Rb pAb | Hu, Ms, Rat | ICC/IF, IHC-Fr, IHC-P, WB |
| GTX107701 | SHANK1 antibody [C3], C-term | Rb pAb | Hu, Ms, Rat | ICC/IF, IHC-Fr, IHC-P, WB |
| GTX89312 | SLC24A5 antibody, Internal | Gt pAb | Ms, Rat | WB |
| K C GTX627404 | SOX2 antibody [GT1876] | Ms mAb | Hu, Ms, Rat, Zfsh | FACS, IHC-Fr, IP, WB |
| K C GTX101507 | SOX2 antibody [N1C3] | Rb pAb | Hu, Ms, Rat | FACS, ICC/IF, IHC-Fr, IHC-P, IP, WB |
| C GTX100865 | Synaptophysin antibody | Rb pAb | Hu, Ms, Rat | ICC/IF, IHC-P, WB |
| GTX45560 | SYT9 antibody, Internal | Rb pAb | Hu, Ms | IHC-P, WB |
| C GTX113016 | Tyrosine Hydroxylase antibody | Rb pAb | Hu, Ms, Rat, Vole | ICC/IF, IHC-Fr, IHC-P, WB |
| C GTX82570 | Tyrosine Hydroxylase antibody | Shp pAb | Rat, Mamm | ICC/IF, IHC, WB |
| C GTX10372 | Tyrosine Hydroxylase antibody [185] | Ms mAb | Hu, Ms, Rat | ICC/IF, IHC-Fr, IHC-P, WB |
| C GTX16557 | Tyrosine Hydroxylase (phospho Ser40) antibody | Rb pAb | Ms, Rat, Bird | ICC/IF, IHC, IHC-Fr, WB |
| GTX133241 | VAMP2 antibody | Rb pAb | Ms, Rat | ICC/IF, IHC-Fr, IHC-P, WB |
| GTX133251 | Vesicular Acetylcholine Transporter antibody | Rb pAb | Ms | IHC-Fr, IHC-P, WB |
| GTX116240 | Vezeatin antibody | Rb pAb | Hu, Ms, Rat | IHC-P, WB |