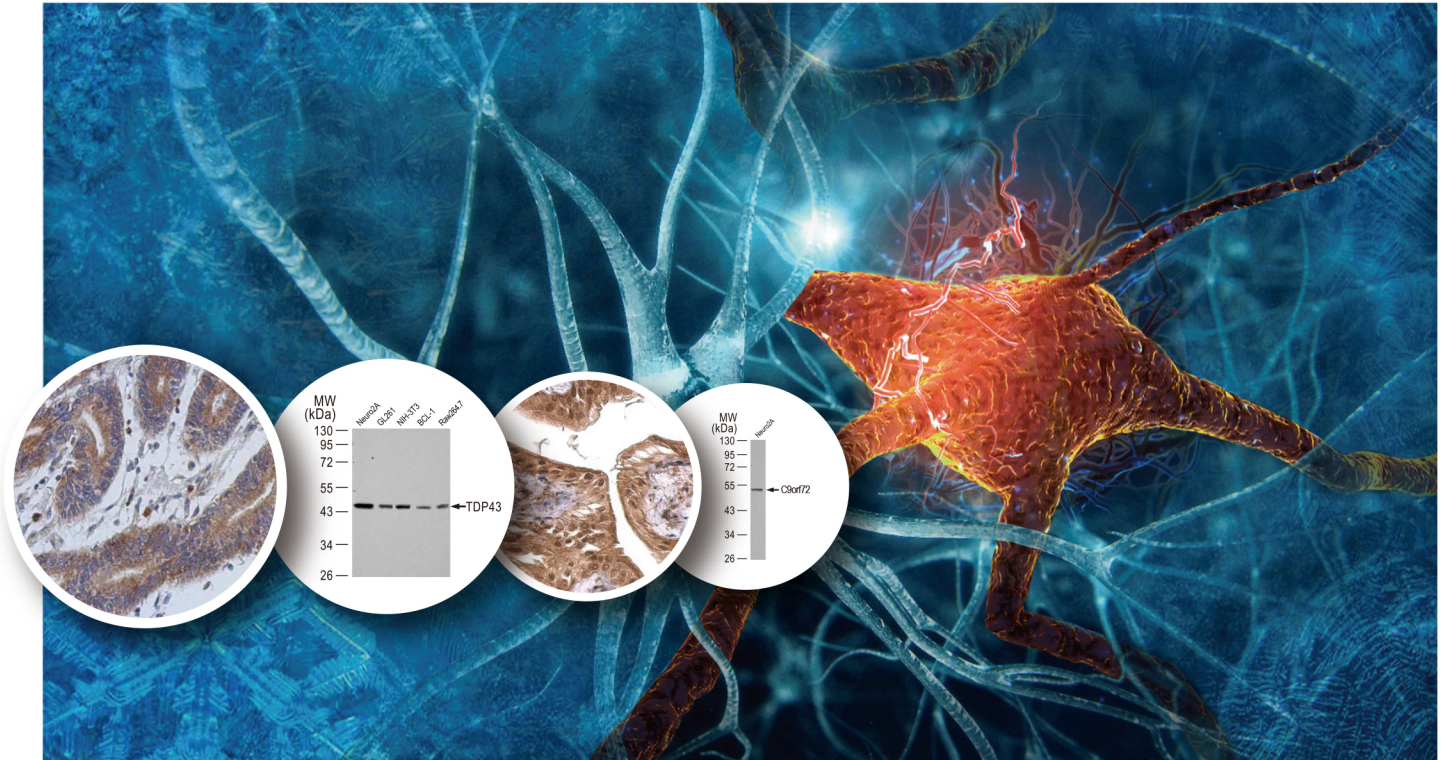


Amyotrophic Lateral Sclerosis

- Your Expertise
- Our Antibodies
- Accelerated Discovery

www.genetex.com

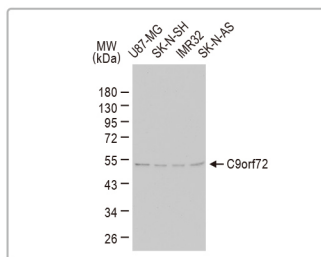



Amyotrophic lateral sclerosis (ALS) is an invariably fatal adult-onset neurodegenerative disorder characterized by the progressive loss of both upper and lower motor neurons. The major clinical presentation of ALS is muscle weakness and atrophy affecting speech, swallowing, and movement, with respiratory failure being the most common reason for death usually within 3-5 years of diagnosis. Though the cause is unknown, recent studies have identified several genes associated with the disease including *SOD1*, *VCP*, *TARDBP*, *FUS*, *C9orf72*, *C21orf2*, and most recently *NEK1*.

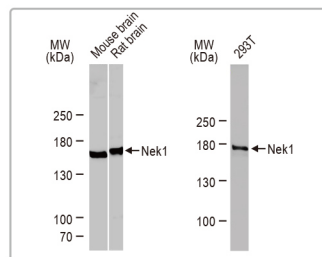
GeneTex is proud to offer exceptional antibodies against these targets relevant to ALS. Please see the examples highlighted below and the accompanying table to find the reagent that facilitates your ALS research.

Highlighted Products

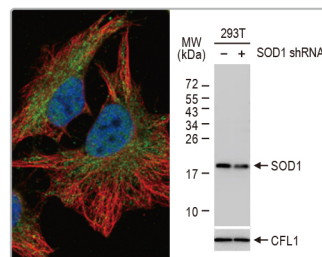
-  Citation Support
-  KO/KD Validation
-  Protein Overexpression





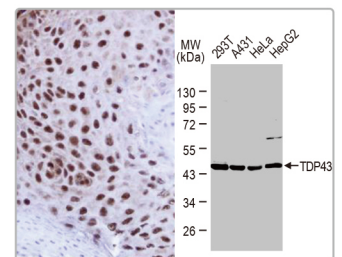
C9orf72 antibody [GT1553] (GTX634482)  





Nek1 antibody (GTX130828)



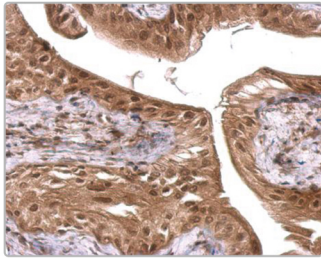
SOD1 antibody (GTX100659)  



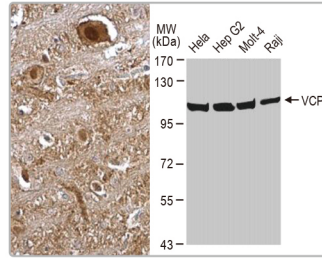
TDP43 antibody (GTX114210)  

Highlighted Products

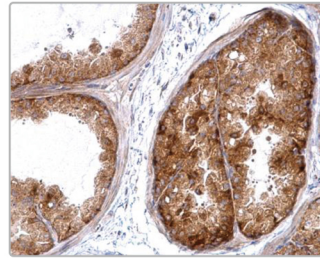
Citation Support



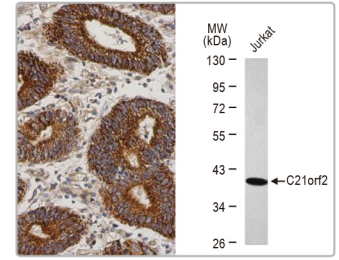
FUS antibody [C1C3]
(GTX101810)



VCP antibody [N1N2], N-term
(GTX113030)



HSC70 antibody [N2C1],
Internal (GTX111069)



C21orf2 antibody [N1C2]
(GTX119046)

Selected Products

Citation Support

KO/KD Validation

Orthogonal Validation

Protein Overexpression

Cat. No.	Product Name	Host & Clonality	Reactivity	Application	
GTX112141	alpha Tubulin 4a antibody	Rb pAb	Hu, Ms, Chk, Dm, Rat	ICC/IF, IHC-P, WB	
GTX113098	alpha Tubulin 4a antibody	Rb pAb	Hu, Ms	ICC/IF, IHC-P, WB	
GTX120076	ALS2CR12 antibody	Rb pAb	Hu	ICC/IF, IHC-P, WB	
GTX130329	ATXN2 antibody	Rb pAb	Hu, Ms	IHC-P, WB	
GTX130331	ATXN2 antibody	Rb pAb	Hu	ICC/IF, WB	
GTX119046	C21orf2 antibody [N1C2]	Ms mAb	Hu	ICC/IF, IHC-P, WB	
GTX634482	C9orf72 antibody [GT1553]	Ms mAb	Hu, Ms	WB	
GTX632041	C9orf72 antibody [GT779]	Rb pAb	Hu, Ms, Rat	IHC-P, IP, WB	
GTX100231	DCTN1 antibody [C3], C-term	Rb pAb	Hu, Ms, Rat	ICC/IF, IHC-P, WB	
GTX110048	FIG4 antibody	Rb pAb	Hu	ICC/IF, IHC-P, WB	
GTX101810	FUS antibody [C1C3]	Rb pAb	Hu, Ms	IHC-P, WB	
GTX113486	Galectin 3 antibody	Rb pAb	Hu, Rat	ICC/IF, IHC-P, WB	
GTX125897	Galectin 3 antibody	Rb pAb	Hu, Ms, Rat	ELISA, IHC-P, WB	
GTX114078	Gelsolin antibody	Rb pAb	Hu, Ms, Rat	ICC/IF, IHC-P, WB	
GTX101185	Gelsolin antibody [C2C3], C-term	Ms mAb	Hu, Ms, Rat	ICC/IF, IHC-P, WB	
GTX633690	Gelsolin antibody [GT1656]	Rb pAb	Hu, Ms, Rat	IHC-P, WB	
GTX130498	Gemin 5 antibody	Rb pAb	Hu, Ms	ICC/IF, IHC-P, IP, WB	
GTX101277	HMGB1 antibody	Rb pAb	Hu, Ms, Pig, Rat	ICC/IF, IHC, IHC-P, WB	
GTX127344	HMGB1 antibody	Ms mAb	Hu, Ms, Rat	ICC/IF, IHC-Fr, IHC-P, IP, WB	
GTX628835	HMGB1 antibody [GT348]	Ms mAb	Hu, Ms, Rat	ICC/IF, IHC-Fr, IHC-P, WB	
GTX628834	HMGB1 antibody [GT383]	Rb pAb	Hu, Ms, Rat	ICC/IF, IHC-Fr, IHC-P, WB	
GTX101144	HSC70 antibody	Rb pAb	Hu, Ms, Rat	ICC/IF, IHC-P, WB	
GTX111069	HSC70 antibody [N2C1], Internal	Rb pAb	Hu, Ms	ICC/IF, IHC-P, WB	
GTX108338	NAK antibody [C3], C-term	Rb pAb	Hu	ICC/IF	
GTX113057	NAK antibody [N2C1], Internal	Ms mAb	Hu, Ms	ICC/IF, IHC-P, WB	
GTX30202	NAK ATPase alpha 1 antibody [464.6(6H)]	Rb pAb	Hu, Ms, Dog, Dm, Pig, Rat, Yeast, Gpig, NHuPrm, Rb, Bov, Xenopus	ICC/IF, IHC-Fr, IHC-P, IP, WB	
GTX130828	Nek1 antibody	Rb pAb	Hu, Ms	ICC/IF, WB	
GTX105447	Optineurin antibody	Rb pAb	Hu	ICC/IF, IHC-P, IP, WB	
GTX132575	Optineurin antibody	Rb pAb	Hu, Ms	ICC/IF, IHC-P, WB	
GTX102005	Peripherin antibody	Rb pAb	Hu	IHC-P, WB	
GTX120605	SCFD1 antibody [N2C1], Internal	Rb pAb	Hu	IHC-P, WB	
GTX101047	SMN1 antibody	Rb pAb	Hu	ICC/IF, WB	
GTX118263	SMNDC1 antibody [N1C3-2]	Rb pAb	Hu, Ms	ICC/IF, IHC-P, WB	
GTX100554	SOD1 antibody	Rb pAb	Hu, Ms, Rat, Bird	ELISA, ICC/IF, IHC-P, WB	
GTX100659	SOD1 antibody	Rb pAb	Hu, Ms, Rat	ICC/IF, IHC-Fr, IHC-P, WB	
GTX133943	SQSTM1 / P62 (phospho Ser272) antibody	Rb pAb	Hu	WB	
GTX134001	SQSTM1 / P62 (phospho Ser349) antibody	Rb pAb	Hu	WB	
GTX128171	SQSTM1 / P62 (phospho Ser403) antibody	Ms mAb	Hu, Ms, Rat	FACS, IHC-P, WB	
GTX629890	SQSTM1 / P62 antibody [GT1478]	Ms mAb	Hu, Ms	FACS, ICC/IF, IHC-Fr, WB	
GTX629888	SQSTM1 / P62 antibody [GT239]	Rb pAb	Hu, Rat	ICC/IF, WB	
GTX100685	SQSTM1 / P62 antibody [N3C1], Internal	Rb pAb	Hu, Ms, Rat, Zfsh, Bov, Honeybee	FACS, ICC/IF, IHC-P, IP, WB	
GTX114210	TDP43 antibody	Ms mAb	Hu, Ms, Rat	ICC/IF, IHC-P, IP, WB, ChIP-seq	
GTX633973	TDP43 antibody [GT6310]	Ms mAb	Hu, Ms, Rat	IHC-Fr, IHC-P, WB	
GTX630197	TDP43 antibody [GT733]	Rb pAb	Hu, Ms, Rat	ICC/IF, IHC-P, WB	
GTX101089	VCP antibody	Rb pAb	Hu, Ms, Rat	ICC/IF, IHC-Fr, IHC-P, IP, WB	
GTX113030	VCP antibody [N1N2], N-term	Rb pAb	Hu, Ms, Dog, Rat	ICC/IF, IHC-P, IP, WB	

GeneTex
International

Tel 886.3.6208988
Fax 886.3.6208989

Stratech

Address 6F-2, No.89, Dongmei Rd., Hsinchu 300, Taiwan (R.O.C.)
E-mail international@genetex.com

✉ e: info@stratech.co.uk

USA

Toll-free 1.877.GeneTex(1.877.436.3839)
Fax 1.949.309.2888

🌐 w: stratech.co.uk/genetex

📞 t: +44 (0) 1638 782600

Address 2456 Alton Parkway, Irvine, CA 92606 USA
E-mail info@genetex.com

www.genetex.com

PD-A006-190215