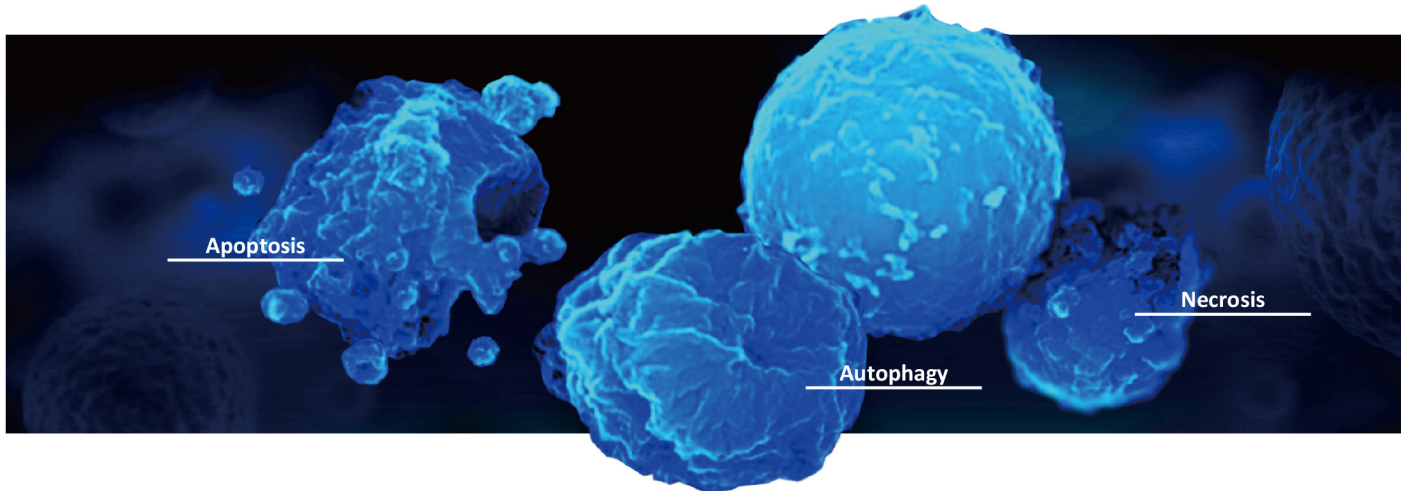


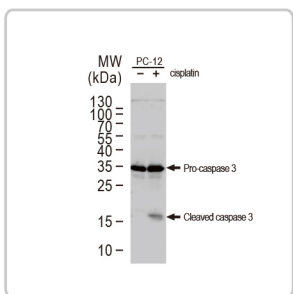
# Cell Death



- Your Expertise
- Our Antibodies
- Accelerated Discovery

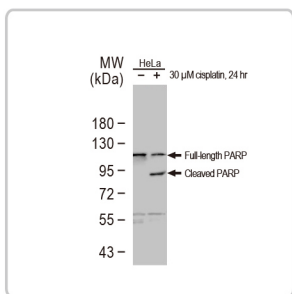
[www.genetex.com](http://www.genetex.com)





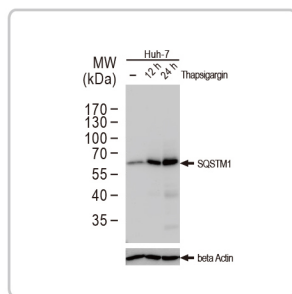
-  Citation Support
-  KO/KD Validation
-  Comparable Abs
-  Orthogonal Validation



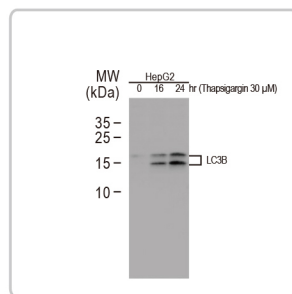
Caspase 3 antibody  
(GTX110543)   



PARP antibody (GTX100573)  
   



SQSTM1 antibody [GT1478]  
(GTX629890)   













LC3B antibody (GTX127375)  

## Antibody Panels for Cell Death Research

-  KO/KD Validation
-  Citation Support










### Bcl-2 Family Antibody Panel

Cat. No. GTX300026 

Content	Reactivity	Application	
Anti-Rabbit IgG antibody (HRP)	Rb	IHC-P, Dot, ELISA, WB	
Bad antibody	Hu	WB	 
BAK antibody [N1N2], N-term	Hu	IHC-P, WB	
Bax antibody [N1N2], N-term	Hu, Rat	ICC/IF, IHC-P, IP, WB	
Bcl-2 antibody [N1N2], N-term	Hu, Ms, Rat	IHC-P, WB	
Bcl-X antibody	Hu, Ms, Rat	ICC/IF, IHC-P, IP, WB	
MCL1 antibody	Hu	ICC/IF, IHC-P, WB	
PUMA antibody [C2C3], C-term	Hu	IHC-P, IP, WB	 







### Caspase Antibody Panel 1

Cat. No. GTX300110

Content	Reactivity	Application	
Anti-Rabbit IgG antibody (HRP)	Rb	IHC-P, Dot, ELISA, WB	
Caspase 3 antibody	Hu, Ms, Rat	ICC/IF, IHC-P, IHC-Fr, IP, WB	 
Caspase 8 antibody	Hu, Ms, Rat	ICC/IF, IHC-P, WB	 
Caspase 9 antibody	Hu, Rat	IHC-P, IP, WB	 
PARP antibody	Hu, Ms	ICC/IF, IHC-P, IP, WB, ChIP assay	 










### IAPs Family Antibody Panel

Cat. No. GTX300097

Content	Reactivity	Application	
Anti-Rabbit IgG antibody (HRP)	Rb	Dot, ELISA, IHC-P, WB	
clAP1 antibody	Hu, Ms, Rat	IHC-P, WB	
clAP2 antibody	Hu	IHC-P, WB	
Survivin antibody	Hu, Ms	ICC/IF, IHC-P, IP, WB	
XIAP antibody	Hu	ICC/IF, IHC-P, WB	 

### Autophagosome Marker Antibody Panel

Cat. No. GTX300079

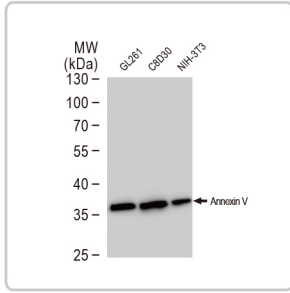
Content	Reactivity	Application	
Anti-Rabbit IgG antibody (HRP)	Rb	Dot, ELISA, IHC-P, WB	
Atg5 antibody	Hu	ICC/IF, IHC-P, WB	 
Atg12 antibody	Hu, Ms, Rat	IHC-P, IP, WB	 
SQSTM1 antibody	Hu, Ms, Rat, Zfsh,	FACS, ICC/IF,	 
[N3C1], Internal	Bovine, Honeybee	IHC-P, IP, WB	
LC3B antibody	Hu, Ms, Rat, Pig	FACS, ICC/IF, IHC-P, IP, WB	 

# Apoptosis

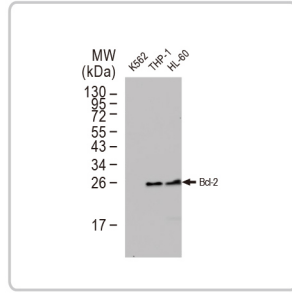
Citation Support

KO/KD Validated

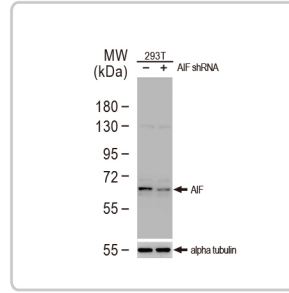
Orthogonal Validation



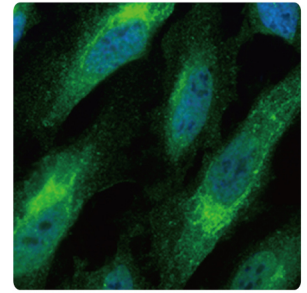
Annexin V antibody (GTX103250)



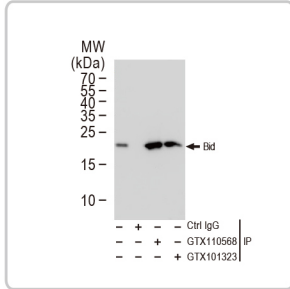
Bcl-2 antibody [N1N2], N-term (GTX100064)



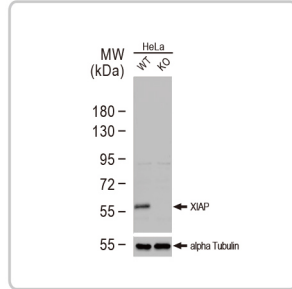
AIF antibody [N1C1] (GTX113306)



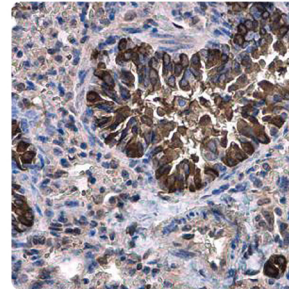
Bax antibody [N1N2], N-term (GTX109683)



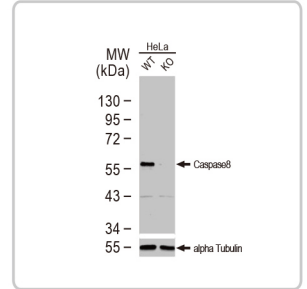
Bid antibody [N1C3-2] (GTX110568)



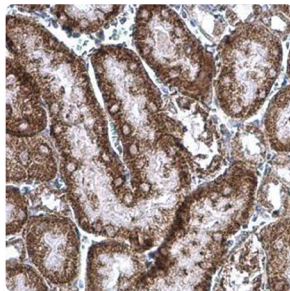
XIAP antibody [N1C1] (GTX113130)



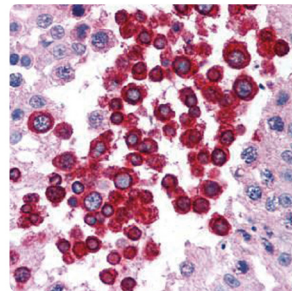
Calpain 1 antibody (GTX102340)



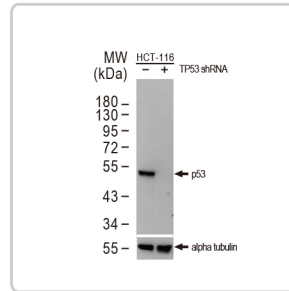
Caspase 8 antibody (GTX110723)



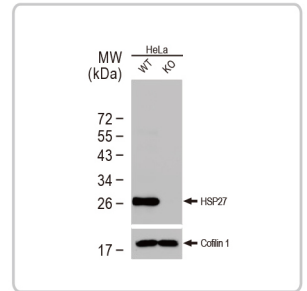
cIAP1 antibody (GTX110087)



ATM antibody [2C1] (GTX70103)



p53 antibody [D01] (GTX70214)



HSP27 antibody (GTX101145)

## Apoptosis Selected Products

Citation Support

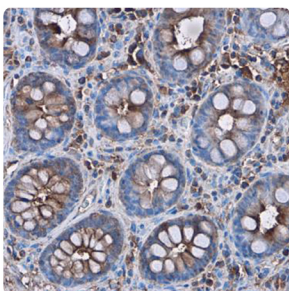
KO/KD Validation

Orthogonal Validation

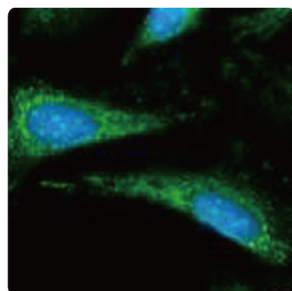
Cat. No.	Product Name	Host & Clonality	Reactivity	Application	
GTX113329	Annexin A1 antibody	Rb pAb	Hu, Ms	ICC/IF, IHC-P, WB	
GTX103250	Annexin V antibody	Rb pAb	Hu, Ms, Rat	WB	
GTX101067	APAF1 antibody [C3], C-term	Rb pAb	Hu, Ms, Rat	IHC-P	
GTX107921	ASK1 antibody [C2C3-2], C-term	Rb pAb	Hu, Ms	IHC-P, WB	
GTX70103	ATM antibody [2C1]	Ms mAb	Hu, Ms, Mk, Rat	ELISA, FACS, ICC/IF, IHC-P, IP, WB, IHC-R, ChIP assay	
GTX70109	ATR antibody [2B5]	Ms mAb	Hu, Ms	ICC/IF, IP, WB, Functional Assay	
GTX130108	Bad antibody	Rb pAb	Hu	WB	
GTX59560	Bad (phospho Ser112) antibody	Rb pAb	Hu, Ms, Rat	IHC, IP, WB	
GTX38680	Bad (phospho Ser136) antibody	Rb pAb	Hu, Ms, Rat	IHC-P, WB	
GTX100063	BAK antibody [N1N2], N-term	Rb pAb	Hu	IHC-P, WB	
GTX23191	Bax antibody [5B7]	Ms mAb	Ms	ICC/IF, WB	
GTX109683	Bax antibody [N1N2], N-term	Rb pAb	Hu, Rat	ICC/IF, IHC-P, IP, WB	
GTX100064	Bcl-2 antibody [N1N2], N-term	Rb pAb	Hu, Ms, Rat	IHC-P, WB	
GTX111872	BCL2L10 antibody [N2C2], Internal	Rb pAb	Hu	ICC/IF, IHC-P, WB	
GTX112088	BCL2L12 antibody	Rb pAb	Hu	IHC-P, WB	
GTX110988	BCL2L15 antibody	Rb pAb	Hu	ICC/IF, IHC-P, WB	
GTX105661	Bcl-X antibody	Rb pAb	Hu, Ms, Rat	ICC/IF, IHC-P, IP, WB	
GTX84834	Bcl-XL antibody [4A9]	Ms mAb	Hu	ICC/IF, WB	
GTX124266	Bcl-XS antibody	Rb pAb	Hu, Rat	IHC-P, WB	
GTX110568	Bid antibody [N1C3-2]	Rb pAb	Hu, Ms, Rat	ICC/IF, IHC-P, IP, WB	
GTX102350	Calpain 1 antibody	Rb pAb	Hu	FACS, ICC/IF, IHC-P, WB	
GTX102499	Calpain 2 antibody [N2C1], Internal	Rb pAb	Hu, Ms	FACS, ICC/IF, IHC-P, WB	
GTX101322	Caspase 1 antibody [N1N3]	Rb pAb	Hu	ICC/IF, IHC-P, WB	
GTX14367	Caspase 1 antibody [14F468]	Ms mAb	Hu, Ms, Rat	FACS, IHC-P, WB	
GTX123675	Caspase 1 p10 subunit antibody	Rb pAb	Hu, Ms	IHC-P	
GTX133447	Caspase 1 (cleaved Asp297) antibody	Rb pAb	Hu	WB	
GTX110542	Caspase 2 antibody	Rb pAb	Hu	WB	
GTX22302	Caspase 3 (active) antibody	Rb pAb	Hu, Ms, Rat, Frt	ICC/IF, IHC, IHC-Fr, IHC-P, WB	
GTX86952	Caspase 3 (cleaved Asp175) antibody	Rb pAb	Hu, Ms, Rat	ELISA, IHC-P, WB	
GTX110543	Caspase 3 antibody	Rb pAb	Hu, Ms, Rat	ICC/IF, IHC-Fr, IHC-P, IP, WB	
GTX86890	Caspase 4 (cleaved Gln81) antibody	Rb pAb	Hu	ELISA, WB	

Cat. No.	Product Name	Host & Clonality	Reactivity	Application	
GTX113639	Caspase 4 antibody	Rb pAb	Hu	IHC-P, WB	Ⓟ
GTX86923	Caspase 5 (cleaved Asp121) antibody	Rb pAb	Hu	ELISA, WB	
GTX86899	Caspase 5 (cleaved Ser331) antibody	Rb pAb	Hu	ELISA, WB	
GTX59707	Caspase 5 antibody	Rb pAb	Hu, Ms, Mk, Rat, Hm, Bov	WB	
GTX59553	Caspase 6 (active) antibody	Rb pAb	Hu, Ms, Rat	WB	
GTX102355	Caspase 6 antibody	Rb pAb	Hu	IHC-P, WB	Ⓞ
GTX22323	Caspase 7 (active) antibody	Rb pAb	Hu, Ms, Rat	ICC/IF, IHC, IP, WB	Ⓞ
GTX123679	Caspase 7 antibody	Rb pAb	Hu	IHC-P, WB	Ⓞ
GTX59607	Caspase 8 (active) antibody	Rb pAb	Ms, Rat	WB	
GTX110723	Caspase 8 antibody	Rb pAb	Hu, Ms, Rat	ICC/IF, IHC-P, WB	Ⓞ
GTX22324	Caspase 9 (active) antibody	Rb pAb	Hu	ICC/IF, IP, WB	Ⓞ
GTX112888	Caspase 9 antibody [N2C3]	Rb pAb	Hu, Rat	IHC-P, IP, WB	Ⓞ
GTX132331	Caspase 9 (cleaved Asp330) antibody	Rb pAb	Hu	WB	Ⓞ
GTX113148	Caspase 10 antibody	Rb pAb	Hu	ICC/IF, IHC-P, WB	
GTX10454	Caspase 11 antibody [17D9]	Rat mAb	Ms	IHC-Fr, IP, WB	
GTX74429	Caspase 12 antibody, N-term	Rb pAb	Hu, Ms, Rat	IHC-P, WB	Ⓞ
GTX85523	Caspase 13 antibody	Rb pAb	Hu, Ms, Rat	IHC-P, WB	
GTX111888	Caspase 14 antibody	Rb pAb	Hu	WB	
GTX110087	clAP1 antibody	Rb pAb	Hu, Ms, Rat	IHC-P, WB	Ⓞ
GTX113128	clAP2 antibody [C1C3]	Rb pAb	Hu	IHC-P, WB	Ⓞ
GTX108585	Cytochrome C antibody	Rb pAb	Hu, Ms, Rat	IHC-Fr, IHC-P, WB	Ⓞ
GTX633691	Cytochrome C antibody [GT577]	Ms mAb	Hu, Ms, Rat	IHC-P, WB	
GTX113864	DAP3 antibody [N1C2-2]	Rb pAb	Hu	ICC/IF, IHC-P, WB	Ⓞ
GTX112908	Daxx antibody [N1N3]	Rb pAb	Hu	ICC/IF, IHC-P, WB	
GTX106746	Diablo antibody [N1C3]	Rb pAb	Hu, Ms	IHC-P, WB	
GTX105713	DR3 antibody	Rb pAb	Hu	IHC-P, WB	
GTX114385	EndoG antibody [N1C3]	Rb pAb	Hu, Ms	ICC/IF, WB	Ⓞ
GTX13550	Fas antibody	Rb pAb	Hu, Ms, Dog, Rat	FACS, IHC, WB	Ⓞ
GTX116024	Fas antibody [N3C2], Internal	Rb pAb	Hu	WB	Ⓞ
GTX31191	Fas Ligand antibody	Gt pAb	Hu, Ms	ELISA, IHC-P, Neut, WB	Ⓞ
GTX113047	FLIP antibody [N1C1]	Rb pAb	Hu	IHC-P, WB	Ⓞ
GTX101145	HSP27 antibody	Rb pAb	Hu, Ms, Rat	FACS, ICC/IF, IHC-P, IP, WB	Ⓞ
GTX112964	HSP27 antibody	Rb pAb	Hu	ICC/IF, IHC-P, IP, WB	Ⓞ
GTX111088	HSPA1A antibody	Rb pAb	Hu, Ms, Rat	ICC/IF, IHC-P, IP, WB	Ⓞ
GTX106148	HSPA1B antibody	Rb pAb	Hu, Rat	ICC/IF, IHC-P, WB	
GTX109753	Hsp90 alpha antibody	Rb pAb	Hu, Ms, Rat	ICC/IF, IHC-P, IP, WB	Ⓞ
GTX101448	HSP90 beta antibody	Rb pAb	Hu, Ms, Rat	ICC/IF, IHC-P, IP, WB, ELISA-Ag	Ⓞ
GTX628789	Histone H2A.XS139ph (phospho Ser139) antibody [GT2311]	Ms mAb	Hu, Ms, Rat	ICC/IF, IHC-P, IP, WB	Ⓞ
GTX132328	ICAD (cleaved Asp224) antibody	Rb pAb	Hu	WB	Ⓞ
GTX103668	ICAD antibody [N1C3]	Rb pAb	Hu, Ms, Rat	WB	Ⓞ
GTX130387	IRE1 alpha antibody	Rb pAb	Hu	WB	Ⓞ
GTX132808	IRE1 alpha (phospho Ser724) antibody	Rb pAb	Hu, Ms, Rat	WB	Ⓞ
GTX101127	Lamin A + C antibody	Rb pAb	Hu, Ms, Rat	ICC/IF, IHC-P, IP, WB	Ⓞ
GTX102026	MCL1 antibody	Rb pAb	Hu, Ms	ICC/IF, IHC, IHC-P, WB	Ⓞ
GTX70220	Nuclear Matrix Protein p84 antibody [5E10]	Ms mAb	Hu, Ms, Mk, Rat, Hm	ICC/IF, IHC, IP, WB, CHIP assay	Ⓞ
GTX70214	p53 antibody [D01]	Ms mAb	Hu	ELISA, FACS, ICC/IF, IHC-Fr, IHC-P, IP, WB	Ⓞ
GTX132995	p53 (phospho Ser15) antibody	Rb pAb	Hu	ICC/IF, WB	Ⓞ
GTX133902	p53 (phospho Ser33) antibody	Rb pAb	Hu	WB	Ⓞ
GTX634168	p53 (phospho Ser46) antibody [GT1018]	Ms mAb	Hu	ICC/IF, WB	Ⓞ
GTX100573	PARP antibody	Rb pAb	Hu, Ms, Rat	ICC/IF, IHC-Fr, IHC-P, IP, WB, in vitro, CHIP assay	Ⓞ
GTX628836	PARP antibody [GT6212]	Ms mAb	Hu, Rat	IHC-P, WB	Ⓞ
GTX112864	PARP antibody [N2C1], Internal	Rb pAb	Hu, Ms, Rat	ICC/IF, IHC-P, IP, WB, CHIP assay	Ⓞ
GTX109675	PUMA antibody [C2C3], C-term	Rb pAb	Hu	IHC-P, IP, WB	Ⓞ
GTX100052	Survivin antibody	Rb pAb	Hu	ICC/IF, IHC-P, IP, WB	Ⓞ
GTX113043	TRAIL antibody	Rb pAb	Hu	WB	Ⓞ
GTX111702	Transglutaminase 2 antibody [N3C3]	Rb pAb	Hu, Ms	ICC/IF, IHC-P, WB	Ⓞ
GTX100496	XIAP antibody [C1C3]	Rb pAb	Hu, Ms	ICC/IF, IHC-P, WB	Ⓞ

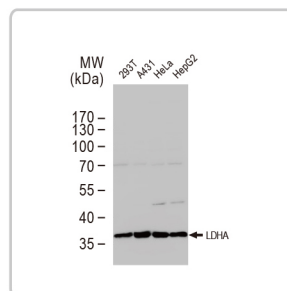
## Necrosis



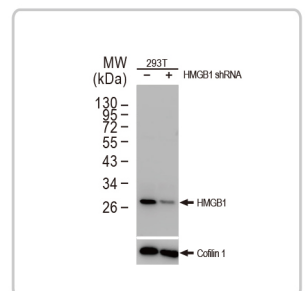
C-Reactive Protein antibody [N1C3] (GTX101262)



Cyclophilin A antibody [C1C3] (GTX104698) Ⓞ



LDHA antibody (GTX101416) Ⓞ



HMGB1 antibody (GTX101277) Ⓞ

# Necrosis Selected Products

Citation Support

KO/KD Validation

Orthogonal Validation

Cat. No.	Product Name	Host & Clonality	Reactivity	Application
GTX101262	C Reactive Protein antibody [N1C3]	Rb pAb	Hu, Rat	IHC-P, WB
GTX104698	Cyclophilin A antibody [C1C3]	Rb pAb	Hu, Ms	ICC/IF, IHC-P, WB
GTX113520	Cyclophilin A antibody [N1C3]	Rb pAb	Hu, Ms	IHC-P, WB
GTX104038	Cyclophilin 40 antibody	Rb pAb	Hu, Ms	ICC/IF, IHC-P, WB
GTX101277	HMGB1 antibody	Rb pAb	Hu, Ms, Pig, Rat	ICC/IF, IHC, IHC-P, WB
GTX101416	LDHA antibody	Rb pAb	Hu, Ms, Rat	ICC/IF, IHC-P, WB
GTX107574	RIP3 antibody	Rb pAb	Hu, Ms	IHC-Fr, IHC-P, IP, WB

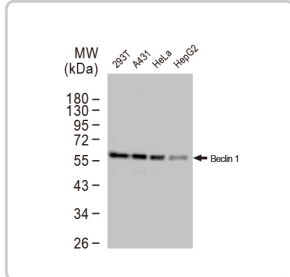
# Autophagy

Citation Support

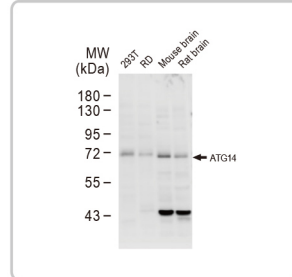
KO/KD Validation

Comparable Abs

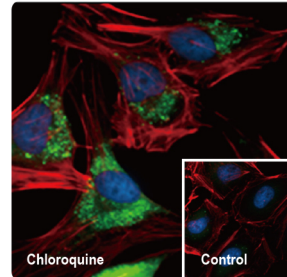
Orthogonal Validation



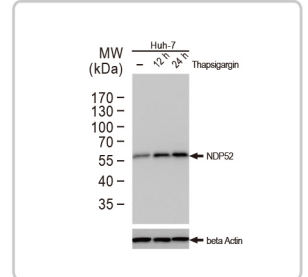
Beclin 1 antibody (GTX133555)



ATG14 antibody (GTX132468)



GABARAPL1 antibody (GTX132664)



NDP52 antibody [GT422] (GTX630396)

# Autophagy Selected Products

Citation Support

KO/KD Validation

Comparable Abs

Orthogonal Validation

Protein Overexpression

Cat. No.	Product Name	Host & Clonality	Reactivity	Application
GTX128065	ATG3 antibody	Rb pAb	Hu, Ms, Rat	WB
GTX115678	ATG4B antibody	Rb pAb	Hu	IHC-P, WB
GTX129488	ATG4C antibody	Rb pAb	Hu	IP, WB
GTX133617	ATG4D antibody	Rb pAb	Hu	WB
GTX113309	ATG5 antibody	Rb pAb	Hu, Ms	ICC/IF, IHC-P, WB
GTX113613	ATG7 antibody [N3C2], Internal	Rb pAb	Hu, Ms	WB
GTX128427	ATG9A antibody	Rb pAb	Hu, Ms, Rat	ICC/IF, IHC-P, IP, WB
GTX132439	ATG9B antibody	Rb pAb	Hu	ICC/IF, WB
GTX132449	ATG10 antibody	Rb pAb	Hu	IHC-P, WB
GTX124181	ATG12 antibody	Rb pAb	Hu, Ms, Rat	IHC-P, IP, WB
GTX629815	ATG12 antibody [GT166]	Ms mAb	Hu, Ms	ICC/IF, WB
GTX123970	ATG13 antibody	Rb pAb	Hu, Ms	IHC-P, WB
GTX132468	ATG14 antibody	Rb pAb	Hu, Ms, Rat	WB
GTX129098	ATG16L1 antibody	Rb pAb	Hu, Ms	ICC/IF, IHC-P, WB
GTX132583	ATG16L2 antibody	Rb pAb	Ms	WB
GTX132435	ATG101 antibody	Rb pAb	Hu	IHC-P, WB
GTX112943	Ferritin Light Chain antibody [N1C3-3]	Rb pAb	Hu, Ms	ELISA, IHC-P, WB
GTX129093	FIP200 antibody	Rb pAb	Hu	ICC/IF, IHC-P, WB
GTX113047	FLIP antibody [N1C1]	Rb pAb	Hu	IHC-P, WB
GTX133555	Beclin 1 antibody	Rb pAb	Hu	WB
GTX10433	BNIP3 antibody [ANa40]	Ms mAb	Hu	ELISA, ICC/IF, IHC, IP, WB
GTX111876	BNIP3L antibody	Rb pAb	Hu, Ms, Rat, Bov	ICC/IF, IHC-P, WB
GTX111010	FIS1 antibody	Rb pAb	Hu, Ms, Rat	ICC/IF, IHC-P, WB
GTX132664	GABARAPL1 antibody	Rb pAb	Hu, Ms, Rat	ICC/IF, WB
GTX102006	GABARAPL2 antibody	Rb pAb	Hu, Ms, Rat	IHC-P, WB
GTX112959	HMGB1 antibody	Rb pAb	Hu, Ms, Rat	ICC/IF, IHC-P, WB
GTX628834	HMGB1 antibody [GT383]	Ms mAb	Hu, Ms, Rat	ICC/IF, IHC-Fr, IHC-P, WB
GTX132889	LC3A antibody	Rb pAb	Hu, Ms	WB
GTX127375	LC3B antibody	Rb pAb	Hu, Ms, Pig, Rat	FACS, ICC/IF, IHC-P, IP, WB
GTX101557	mTOR antibody [C3], C-term	Rb pAb	Hu, Ms, Rat	ICC/IF, IHC-P, IP, WB, ChIP assay
GTX114539	NBR1 antibody	Rb pAb	Hu, Ms	IHC-P, WB
GTX115378	NDP52 antibody	Rb pAb	Hu, Ms	ICC/IF, IHC-P, IP, WB
GTX630396	NDP52 antibody [GT422]	Ms mAb	Hu	ICC/IF, IP, WB
GTX108811	NOD1 antibody [C2C3], C-term	Rb pAb	Hu	ICC/IF, WB
GTX105447	Optineurin antibody	Rb pAb	Hu	ICC/IF, IHC-P, IP, WB
GTX107851	PINK1 antibody [N3C3]	Rb pAb	Hu, Ms	ICC/IF, WB
GTX629890	SQSTM1 / P62 antibody [GT1478]	Ms mAb	Hu, Ms	FACS, ICC/IF, IHC-Fr, WB
GTX100685	SQSTM1 / P62 antibody [N3C1], Internal	Rb pAb	Hu, Ms, Rat, Zfsh, Bov, Honeybee	FACS, ICC/IF, IHC-P, IP, WB
GTX128171	SQSTM1 / P62 (phospho Ser403) antibody	Rb pAb	Hu, Ms, Rat	FACS, IHC-P, WB
GTX129279	WIPI1 antibody	Rb pAb	Hu	WB
GTX132453	WIPI2 antibody	Rb pAb	Hu, Rat	ICC/IF, IHC-P, WB
GTX132669	ULK1 antibody	Rb pAb	Hu	WB
GTX111476	ULK2 antibody [C2C3], C-term	Rb pAb	Hu, Ms	ICC/IF, IHC-P, WB

GeneTex International

Stratech

e: info@stratech.co.uk w: stratech.co.uk/genetex t: +44 (0) 1638 782600

Tel 886.3.6208988  
Fax 886.3.6208989

Address 6F-2, No.89, Dongmei Rd., Hsinchu 300, Taiwan (R.O.C.)  
E-mail international@genetex.com

USA

Toll-free 1.877.GeneTex(1.877.436.3839)  
Fax 1.949.309.2888

Address 2456 Alton Parkway, Irvine, CA 92606 USA  
E-mail info@genetex.com

www.genetex.com

PD-C007-190215