

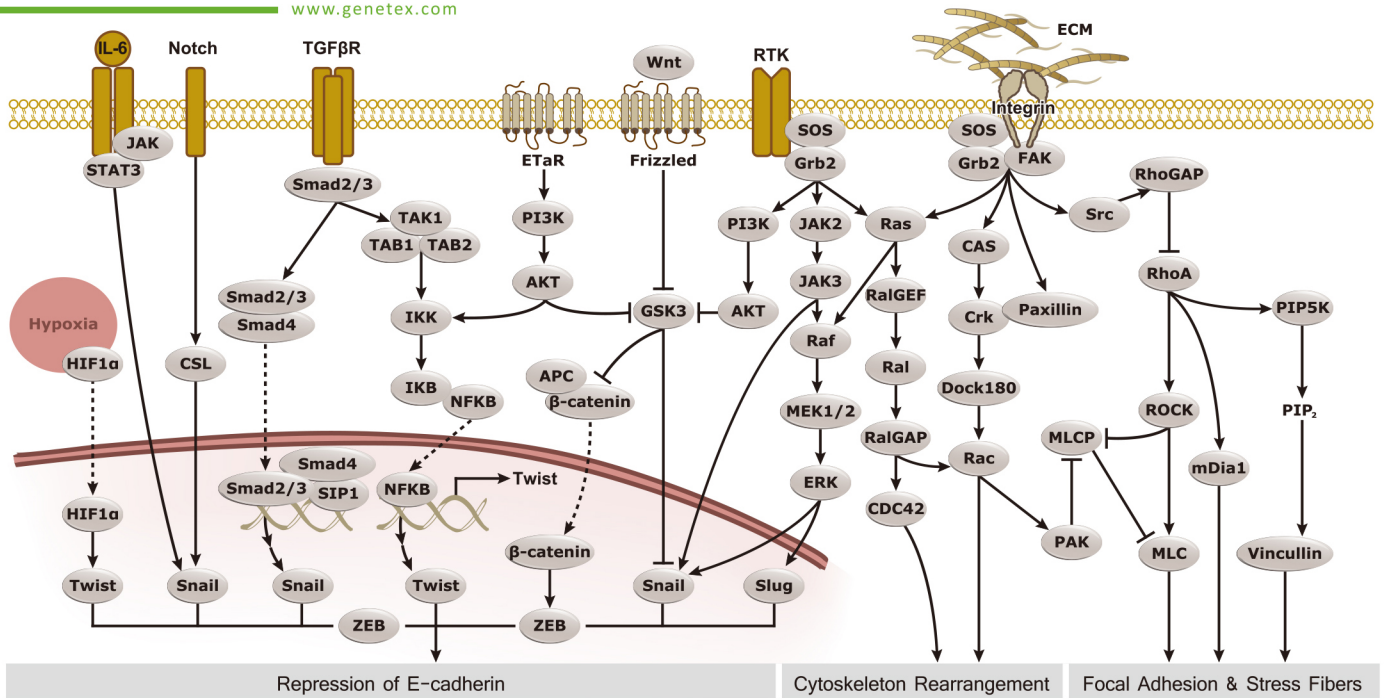
Epithelial-Mesenchymal Transition

Your Expertise

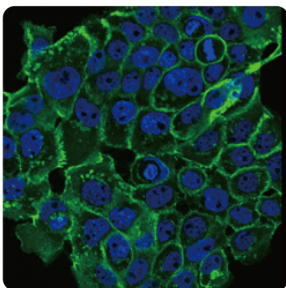
Our Antibodies

Accelerated Discovery

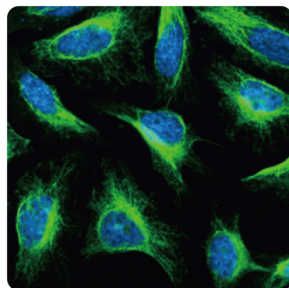
www.genetex.com



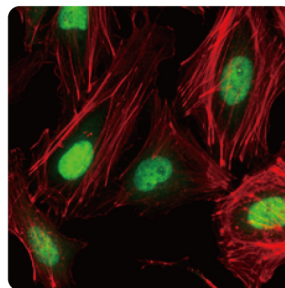
- Citation Support
- KO/KD Validation
- Orthogonal Validation
- Comparable Abs



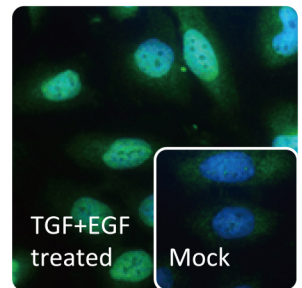
E-Cadherin antibody (GTX100443)



Vimentin antibody (GTX100619)



ZEB1 antibody (GTX105278)



SNAI1 antibody (GTX125918)

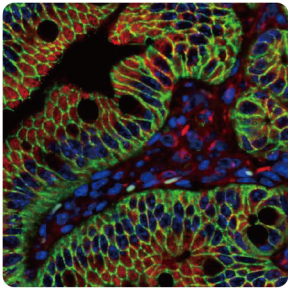
EMT Antibody Panel



- Citation Support
- KO/KD Validation
- Orthogonal Validation
- Comparable Abs
- Protein Overexpression

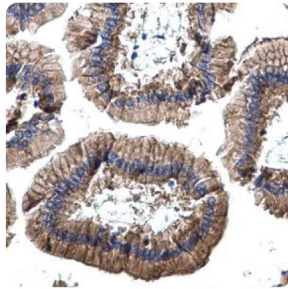
Cat. No.	Product Name	Antibody	Clonality	Reactivity	Application	Validation
GTX300096	EMT Markers Antibody Panel	Vimentin antibody	Rb pAb	Hu, Ms, Rat	ICC/IF, IHC-Fr, IHC-P, IP, WB	KO/KD
		Fibronectin antibody [N1N2], N-term	Rb pAb	Hu, Ms	ICC/IF, IHC-P, IP, WB	Orthogonal
		Twist1/2 antibody	Rb pAb	Hu, Ms, Rat	IHC-P, WB	Protein Overexpression
		E-Cadherin antibody	Rb pAb	Hu, Ms, Rat	ICC/IF, IHC-P, IP, WB	KO/KD
		EpCAM antibody [N3C3]	Rb pAb	Hu, Ms	IHC-P, WB	
		Rabbit IgG antibody (HRP)	Gt pAb	Rb	Dot, ELISA, IHC-P, WB, ICC/IF	

Citation Support

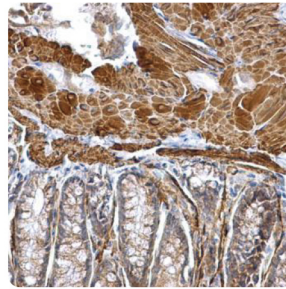
KO/KD Validation





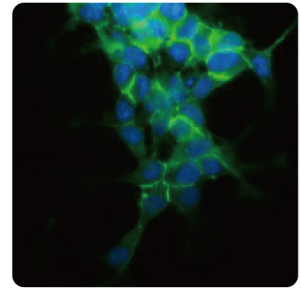
beta Catenin antibody [N1N2-2], N-term (GTX101435)  




EpCAM antibody [N3C3], (GTX113091) 



alpha Smooth Muscle Actin antibody (GTX100034)  



N-Cadherin antibody (GTX127345) 

EMT-inducing transcription factors





















Citation Support

KO/KD Validation

Orthogonal Validation

Comparable Abs

Protein Overexpression

Cat. No.	Product Name	Application	Validation
 GTX101435	beta Catenin antibody [N1N2-2], N-term	FACS, ICC/IF, IHC-P, IP, WB, ChIP assay	
GTX25060	FOXC2 antibody, C-term	IHC-P, WB	
GTX84408	GSC antibody [1D7]	FACS, ICC/IF, IHC-P, WB	
 GTX100754	SNAI1 antibody	ICC/IF, WB	 
 GTX125918	SNAI1 antibody	ICC/IF, IHC, IHC-P, WB	 
 GTX128796	SLUG antibody	IHC-P, WB	
 GTX121924	SLUG antibody	IHC, IHC-P, WB	
GTX129237	TCF3 antibody	ICC/IF, IP, WB	
GTX116056	TCF7L2 antibody	ICC/IF, WB	
 GTX127310	Twist1/2 antibody	IHC-P, WB	
 GTX105278	ZEB1 antibody [N2C1], Internal	ICC/IF, IP, WB, ChIP assay	
 GTX129243	ZEB2 antibody	ICC/IF, WB	
 GTX129186	LEF1 antibody	WB	
GTX100639	ETS1 antibody	WB	 

Epithelial markers














Citation Support

KO/KD Validation

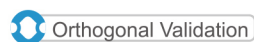
Orthogonal Validation

Comparable Abs

Protein Overexpression

Cat. No.	Product Name	Application	Validation
 GTX100443	E-Cadherin antibody	ICC/IF, IHC-P, IP, WB	 
GTX629691	E-Cadherin antibody [GT477]	ICC/IF, IHC-P, IP, WB	 
 GTX124178	E-Cadherin antibody [N3C2], Internal	ICC/IF, IP, WB	
GTX130427	E-Cadherin (phospho Ser838/840) antibody	IP, WB	
 GTX54539	Claudin 1 antibody	ELISA, ICC/IF, IHC, WB	
 GTX81901	Claudin 2 antibody, N-term	IHC-P, WB	
 GTX15102	Claudin 3 antibody	ICC/IF, IHC, IHC-Fr, IHC-P	
 GTX15102	Claudin 3 antibody	ICC/IF, IHC, IHC-Fr, IHC-P	
 GTX15104	Claudin 4 antibody	ICC/IF, IHC, IHC-P	

Epithelial markers



Cat. No.	Product Name	Application	Validation
GTX49371	Claudin 5 antibody	ICC/IF, IHC-P, WB	
GTX77832	Claudin 8 antibody, C-term	ICC/IF, IHC, IHC-P, WB	
GTX26311	Collagen IV antibody [COL-94]	Dot, EM, ELISA, ICC/IF, IHC-Fr, IHC-P, WB	
GTX26401	pan Cytokeratin antibody [PCK-26]	Blocking, Dot, FACS, ICC/IF, IHC, IHC-Fr, IHC-P, WB	
GTX110311	Cytokeratin 8 antibody	ICC/IF, IHC-P, WB	
GTX112975	Cytokeratin 8 antibody [N1C1]	ICC/IF, IHC-P, WB	
GTX105624	Cytokeratin 18 antibody [N2C2], Internal	ICC/IF, IHC-P, IP, WB	
GTX112977	Cytokeratin 18 antibody [N1N3]	ICC/IF, IHC-P, WB	
GTX112826	Cytokeratin 19 antibody [N1C1]	ICC/IF, IHC-P, WB	
GTX112666	Cytokeratin 19 antibody [N2C3]	ICC/IF, IHC-P, WB	
GTX129931	Desmoglein 3 antibody	IP, WB	
GTX32557	Desmoplakin antibody	IHC-P, WB	
GTX27463	Laminin Antibody	ICC/IF, IHC-Fr, IHC-P, WB, Functional Assay, IHC-FrFI	
GTX11574	Laminin antibody [LAM-89]	ELISA, IHC, IHC-P, WB	
GTX100459	MUC1 antibody	ICC/IF, IHC-P, IP, WB	
GTX15481	MUC1 antibody	IHC-P, WB	
GTX114949	Occludin antibody	ICC/IF, IHC-Fr, IHC-P, WB	
GTX110201	Plakophilin 1 antibody [N2C1], Internal	IHC-P, WB	
GTX108592	ZO-1 antibody	IHC-P, WB	
GTX108613	ZO-1 antibody [N1N2], N-term	ICC/IF, IHC-P, IP, WB	

Mesenchymal markers



Cat. No.	Product Name	Application	Validation
GTX100034	alpha Smooth Muscle Actin antibody	ICC/IF, IHC-Fr, IHC-P, WB	
GTX629702	alpha Smooth Muscle Actin antibody [GT445]	ICC/IF, WB	
GTX112731	COL1A1 antibody [N1N2], N-term	ICC/IF, IHC-P, IP, WB	
GTX102996	COL1A2 antibody [C2C3], C-term	ICC/IF, WB	
GTX20292	Collagen I antibody	ELISA, IHC-P, IP, WB	
GTX26308	Collagen I antibody [COL-1]	Dot, ELISA, ICC/IF, IHC, IHC-Fr, IHC-P, WB	
GTX102997	Collagen III antibody [C2C3], C-term	IHC-P, WB	
GTX111643	Collagen III antibody [C2C3-2], C-term	ICC/IF, IHC-P, WB	
GTX108435	CXCL1 / GRO alpha antibody [N3C3]	WB	
GTX102526	DDR2 antibody [N2N3]	FACS, IHC, IHC-P, WB	
GTX81891	FGF1 antibody, N-term	ICC/IF, IHC-P, WB	
GTX84502	FGF2 antibody [3D9]	ICC/IF, IHC-P, WB	
GTX52744	FGF8 antibody [8D24]	IHC, Neut, WB	
GTX60570	Fibronectin antibody [2F4]	ELISA, FACS, IHC-P, WB	
GTX112794	Fibronectin antibody [N1N2], N-term	ICC/IF, IHC-P, IP, WB	
GTX130705	Integrin alpha 5 antibody	WB	

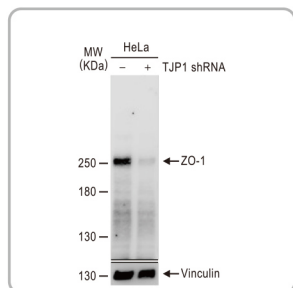
Citation Support

KO/KD Validation

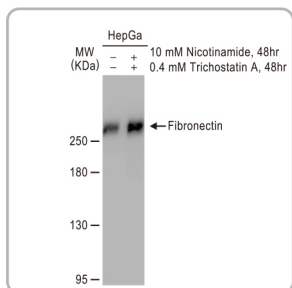
Orthogonal Validation

Comparable Abs

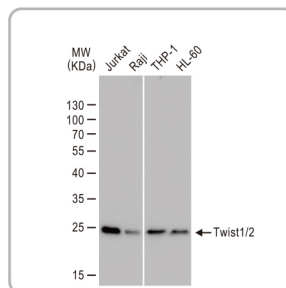
Protein Overexpression



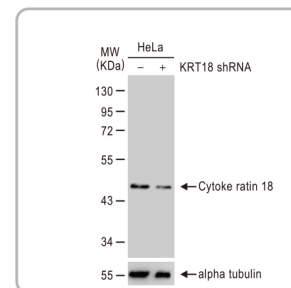
ZO-1 antibody [N1N2]
(GTX108613)



Fibronectin antibody
[N1N2], (GTX112794)



Twist1/2 antibody
(GTX127310)



Cytokeratin 18 antibody
[N2C2], Internal
(GTX105624)

Mesenchymal markers

Citation Support

KO/KD Validation

Orthogonal Validation

Comparable Abs

Protein Overexpression

Cat. No.	Product Name	Application	Validation
GTX128839	Integrin beta 1 / CD29 antibody	IHC-P, IP, WB	
GTX112971	Integrin beta 1 / CD29 antibody	ICC/IF, IHC-P, WB	
GTX104577	MMP2 antibody	ICC/IF, IHC-P, IP, WB	
GTX30147	MMP2 antibody [8B4]	ELISA, ICC/IF, IHC-Fr, IHC-P, IP, WB	
GTX103647	MMP3 antibody [N1C1]	IHC-P, WB	
GTX100723	MMP3 antibody [N3C1], Internal	ICC/IF, IHC-P, WB	
GTX100458	MMP9 antibody [N2C1], Internal	ICC/IF, IHC-P, WB	
GTX127345	N-Cadherin antibody	ICC/IF, IHC-Fr, IHC-P, WB	
GTX112734	N-Cadherin antibody [N1N3]	ICC/IF, IHC-P, WB	
GTX112733	N-Cadherin antibody [N2C1], Internal	IHC, IHC-Fr, IHC-P, WB	
GTX100550	PAI-1 antibody [N1C2]	IHC-P, WB	
GTX132646	pan Cadherin antibody	ICC/IF, WB	
GTX26528	pan Cadherin antibody [CH-19]	ICC/IF, IHC-P, WB	
GTX633689	pan Cadherin antibody [GT2610]	WB	
GTX104753	PATJ antibody [N1], N-term	IHC-P, WB	
GTX32855	S100A4 antibody	IHC-P, WB	
GTX89197	S100A4 antibody, C-term	IHC, IHC-P, WB	
GTX133747	SPARC antibody	IHC-P, WB	
GTX54537	Syndecan-1 / CD138 antibody	ELISA, FACS, IHC-P, WB	
GTX130023	TGF beta 1 antibody	WB	
GTX112661	Vimentin antibody	ICC/IF, IHC-Fr, IHC-P, WB	
GTX100619	Vimentin antibody	ICC/IF, IHC-Fr, IHC-P, IP, WB	
GTX629744	Vimentin antibody [GT812]	FACS, ICC/IF, IHC-Fr, IHC-P, WB	
GTX132607	Vimentin (phospho Ser56) antibody	WB	
GTX103475	Vitronectin antibody	ELISA, IHC-P, WB	