



COVID-19 IgG/IgM Rapid Test Kit

For suspicious patients with symptoms, mild symptoms, or even without symptoms

COVID-19(Corona Virus Disease) is an infectious disease caused by the most recently discovered coronavirus. This highly contagious new virus and disease were unknown before the outbreak began in Wuhan, China which spread all over the world very quickly. COVID-19 IgG/IgM Rapid Test (Whole Blood/ Serum/Plasma) is a rapid chromatographic immunoassay for the **qualitative detection of IgG and IgM antibodies to COVID-19 in human whole blood, serum or plasma** as an aid in the diagnosis of primary and secondary COVID-19 infections.

➡ Product Information

Catalog No.:	UNCOV-40	Principle:	GICA
Specimen:	Human Serum, Plasma or Whole Blood	Format:	Cassette
Reading Time:	10 minutes	Package:	40T/kit
Reagents :	Test Cassette, Buffer, Dropper, Desiccant.		

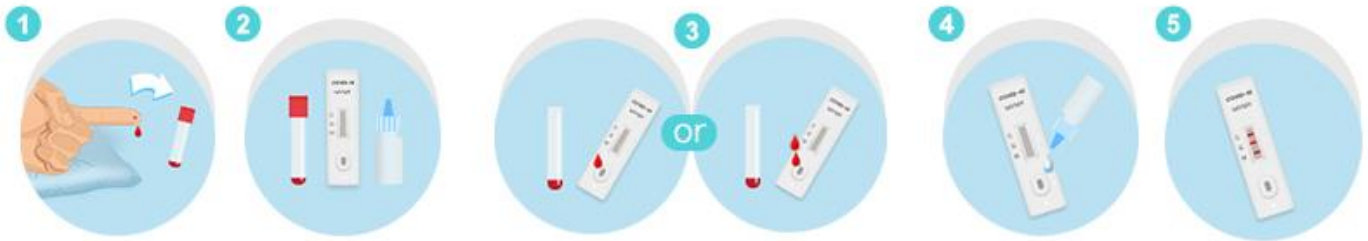
➡ Product Advantages

- ✓ **Easier:** No special equipment needed, Intuitive visual interpretation.
- ✓ **Rapid:** Quick sampling by fingertip blood, Result in 10-15min.
- ✓ **Accurate:** Results with IgG and IgM respectively, validated using PCR and CT.
- ✓ **Application:** For suspicious patients with symptoms, mild symptoms, or even without symptoms, also for testing people with close contact of infected patients and people under quarantine control.

➡ Product Performances

- ✓ **Sensitivity:** 98.511% (95% CI: 96.788%, 99.452%)
- ✓ **Specificity:** 88.208% (95% CI: 83.086%, 92.221%)

➡ Test Procedures



20 µL or 1 drop of
serum/plasma

40 µL or 2 drops
of whole blood

2~3 drops of buffer

1. Sample collection and preparation.
2. Keep the kit and sample to room temperature prior to testing.
3. Add sample to the sample well using a micropipette.
4. Add buffer to the sample well.
5. Wait for the colored line(s) to appear and read the result at 10 minutes .

➡ Interpretations of Results



IgM Positive



IgG and IgM Positive



IgG Positive



Negative



Invalid



Invalid



Invalid



Invalid

- ✓ **IgM Positive:** indicated of primary COVID-19 infection.
- ✓ **IgG and IgM Positive:** indicated of secondary COVID-19 infection.
- ✓ **IgG Positive:** indicated of past COVID-19 infection.
- ✓ **Negative:** indicated of no previous infection.
- ✓ **Invalid:** indicating that the experiment is failed.