



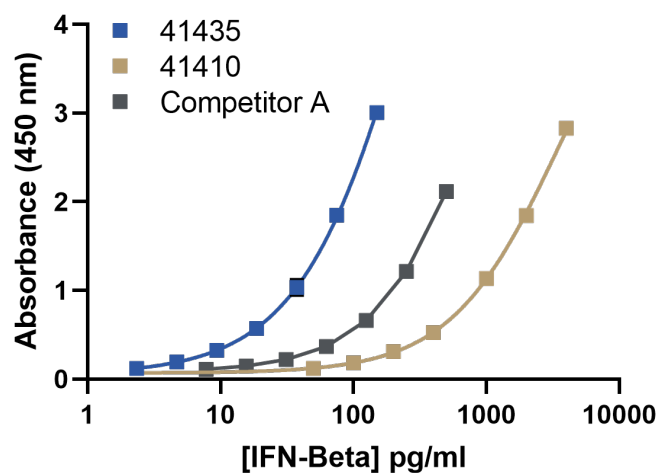
Human IFN-Beta **TCM** ELISA Kit, High Sensitivity

for Tissue Culture Media (TCM)

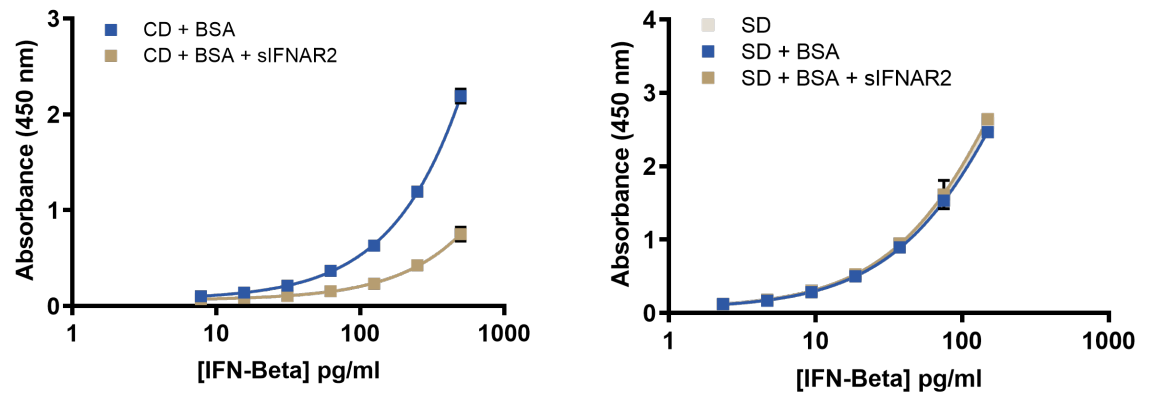
- Highly sensitive (**LLOQ 2.34 pg/ml**) and cost-effective ELISA for accurate IFN-Beta detection in tissue culture media (TCM)
- Reproducible results with $\leq 8\%$ inter- and $\leq 10\%$ intra-assay CVs
- Measures **total IFN-Beta** levels with no interference from soluble IFN-Alpha/Beta Receptor 2 (sIFNAR2)

PBL's VeriKine-HS Human Interferon Beta TCM ELISA (**Catalog No. 41435-1**) features highly sensitive detection and quantification of human interferon beta and provides robust results in tissue culture media (TCM). Internal comparative studies have assessed features ranging from assay sensitivity to the ability to detect IFN-Beta in the presence of soluble Interferon Alpha/Beta Receptor 2 (sIFNAR2) between the market's current offerings.

Figure 1. Comparative Standard Curves for Human IFN-Beta ELISAs



Figures 2 & 3. sIFNAR2 Receptor Interference using Competitor A's (left) and PBL's (right) Human IFN-Beta TCM ELISAs



- Active sIFNAR2 inhibited IFN-Beta detection in Competitor A's ELISA, while detection was not inhibited in PBL's 41435-1 ELISA
- PBL's ELISA detects free IFN-Beta as well as IFN-Beta bound to soluble IFNAR2 receptors

Product Information

Product No.	41435-1
Description	Human IFN-Beta TCM ELISA, High Sensitivity
Size	1 x 96-well plate
Compatibility	Tissue Culture Media (TCM)
Assay Range	2.34 - 150 pg/ml
Assay Time	3 hours

No cross-reactivity detected with:

- Human IFN- α , γ , λ ; IL-6
- Mouse IFN- α , β
- Rat IFN- β

Phone: +44 (0) 1638 782600
E-mail: info@stratech.co.uk
Web: www.stratech.co.uk/pbl