



# Human IL-22 ELISA Kit, High Sensitivity

for Serum, Plasma and Tissue Culture Media (TCM)

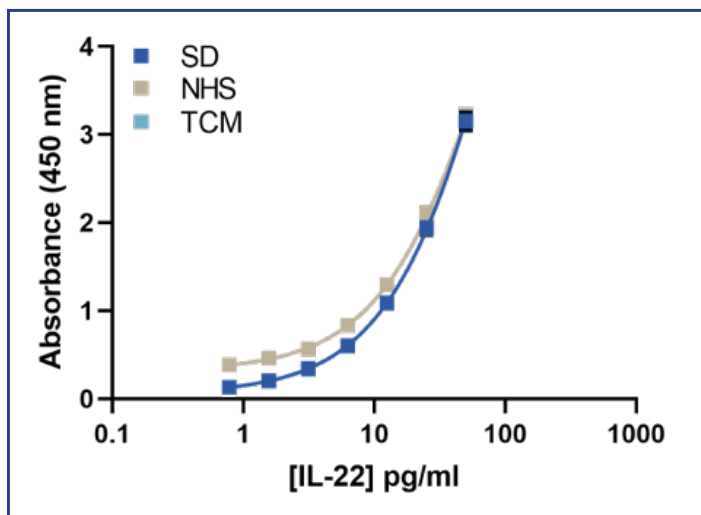
Assay Range: 0.78 - 50 pg/ml

Catalog No. 41701-1

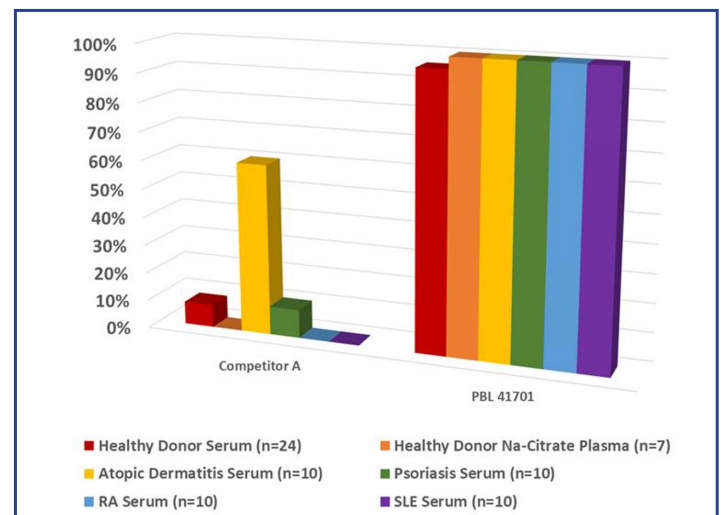
- Best-in-class low picogram (**0.78 pg/ml**) LLOQ provides exquisitely sensitive IL-22 quantification
- Robust matrix tolerance with serum and plasma allows scientists to assess endogenous IL-22 in **healthy and disease sera**
- Highly reproducible results in all tested matrices with inter-and intra-assay CVs < 10%

PBL's VeriKine-HS Human Interleukin 22 ELISA Kit features highly sensitive detection and robust serum/plasma matrix tolerance. Internal comparative studies have assessed features ranging from assay sensitivity to the ability to measure endogenous IL-22 in serum and plasma samples.

**Figure 1.** Representative Standard Curves for Human IL-22 ELISA in Standard Diluent (SD), Normal Human Serum (NHS) and Tissue Culture Media (TCM)



**Figure 2.** Readability Comparison in Healthy Serum & Plasma and Disease State Serum (Competitor A vs PBL 41701)



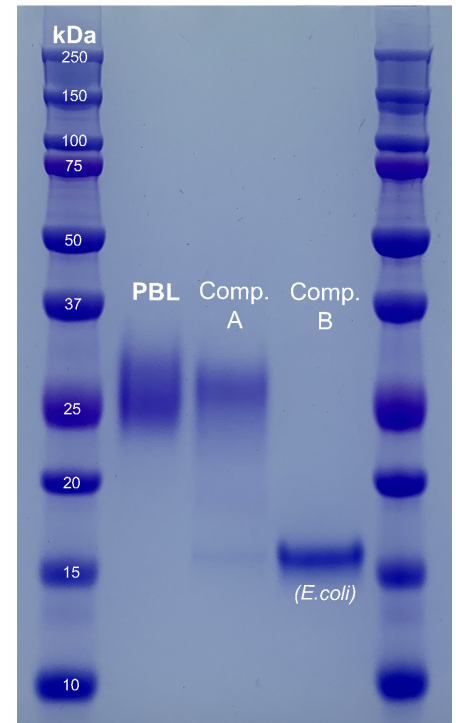
# Human IL-22 Recombinant Protein

Human Cell-Expressed (HCE)

Catalog No. 11701

- Authentic human cell origin
- Exhibits a **high level of purity** with no additional bands or smudges on SDS-PAGE beyond the expected main band
- Tested applications: Direct Binding ELISA, Western Blot, IL-10 Secretion Bioassay

**Figure 4.** SDS-PAGE Comparison of PBL's IL-22 Protein vs Competitor A and B. PBL and Competitor A proteins are human cell-expressed, whereas the Competitor B protein is *E.coli*-expressed.



## Product Information

Catalog No.	Description	Pack Size	Additional Information
41701-1	VeriKine-HS Human Interleukin-22 ELISA Kit	1 x 96-well plate	0.78 - 50 pg/ml Serum, Plasma, TCM
11701-1	Human Interleukin-22 (Human Cell-Expressed)	10 µg	> 95% Purity Endotoxin < 1 EU/µg
11701-2		50 µg	

