

Authenticated Cell Lines For: Cell & Gene Therapy And Contract Research

Cell and Gene Therapy (CGT) developmental programs are poised to revolutionize the treatment of devastating diseases (McKinsey & Co. Global Publishing March 2022). Contract Research Organizations (CROs) that are tasked with specialized research projects perform technically challenging research activities repeatedly at high scale and lower costs.

CH3 BioSystems is your reliable biotechnology partner for acquiring authenticated cell lines that can be used in large-scale commercial research and bio-production.

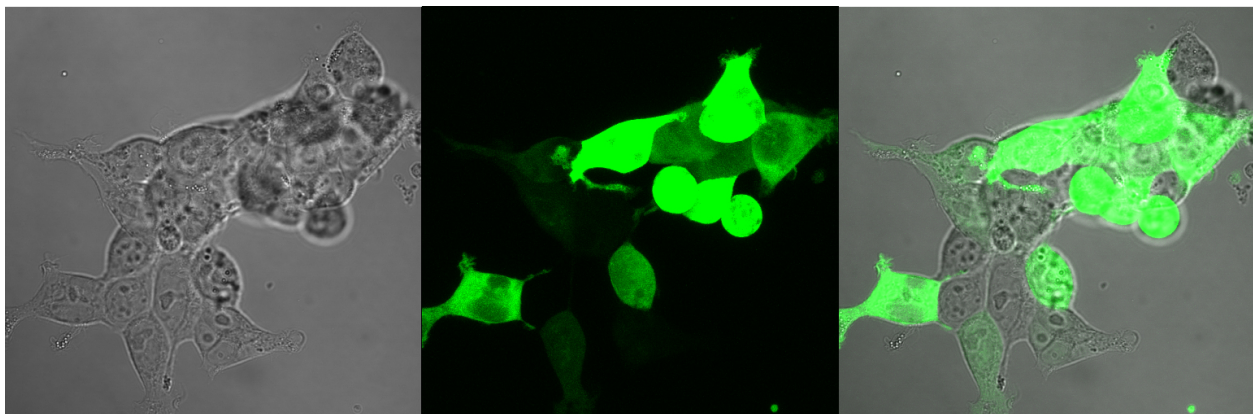
- Before assuming the challenges of CGT development, current Good Manufacturing Practice requires source material from a supplier with ownership of the commercial rights to these unique biological materials.
- CROs can also find the right cell line for their clients' projects at CH3 BioSystems.

Who is CH3 BioSystems?

- Founded in 2007, CH3 BioSystems is celebrating 15 years of service to the life sciences.
- Direct sales worldwide, as well as, through distribution in UK, Europe, Japan and Korea.
- Our market focus is upstream support of cellular and molecular biotechnology.
- Our authenticated, pathogen-tested clonal cell lines are currently used widely to accelerate academic and corporate research.

Why source cells through CH3 BioSystems?

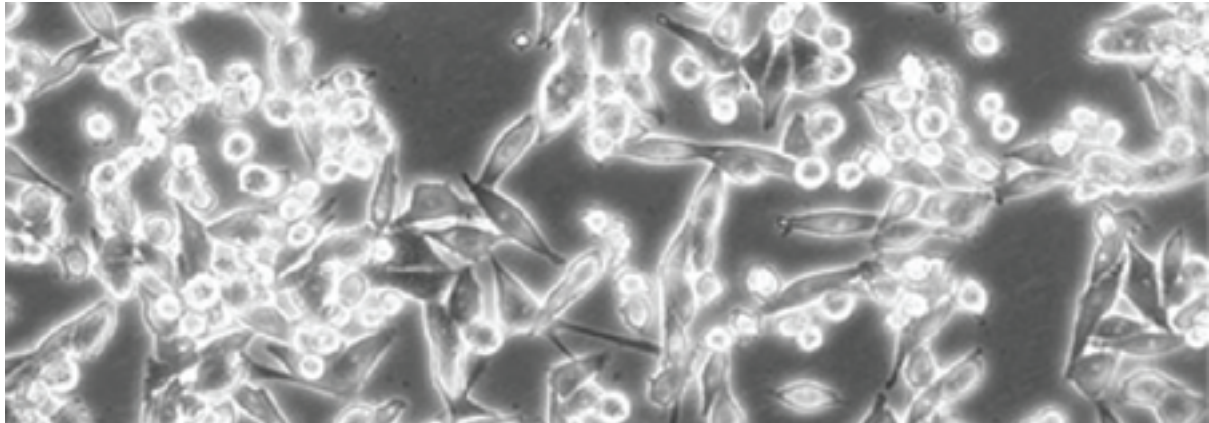
- Expert knowledge in cell biology.
- Decades-long experience in mammalian cell culture systems.
- Rigorous routine testing of a curated inventory by independent lab certification.



Find out more: www.stratech.co.uk/ch3-biosystems

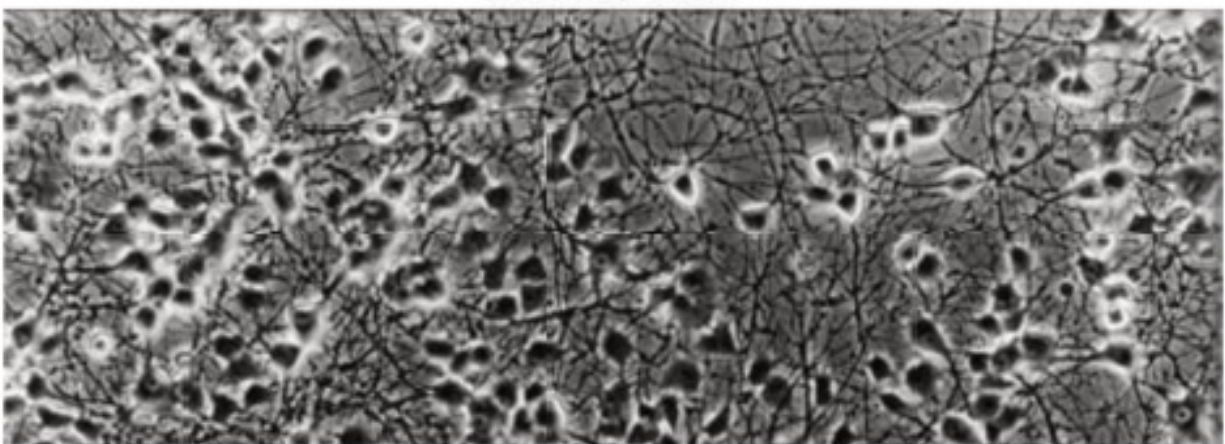
Why our cell lines are unique:

- Reliable adherence to proprietary, exacting cell culture SOPS.
- Superior personalized technical support with complimentary advice on best practices.
- Documented traceable provenance.



Available cell line inventory at CH3 BioSystems:

- HEK293 human embryonic kidney cell line
- HeLa human cervical cancer cell line
- HepG2 human hepatoma hepatocellular carcinoma cell line
- LNCaP human prostate cancer cell line
- PC-3 human prostate cancer cell line
- PC12 rat pheochromocytoma (original and variant cell lines)
- E0771 murine breast cancer adenocarcinoma



Find out more: www.stratech.co.uk/ch3-biosystems