

SARS-CoV-2 Antibodies and Proteins

- Lateral Flow Assay / ELISA Pairs
- Superior Affinity and Specificity
- Neutralization Assay Kit
- VOC Detection

Targeted Region of Spike	Antibody Cat. No.	Clone	WIV04/2019 (reference sequence)	B.1.351 (Beta)	P1 (Gamma)	B.1.617.2 (Delta)	BA.1 (Omicron)	BA.2 (Omicron)	BA.2.12.1 (Omicron)	BA.4/BA.5 (Omicron)
RBD	GTX635807	HL1014	●	●	●	●	●	●	●	●
RBD	GTX635791	HL1002	●	●	●	●	X	X	X	X
RBD	GTX635792	HL1003	●	○	○	●	●	○	●	X
RBD	GTX635793	HL1004	●	○	●	●	X	○	○	●
S1	GTX635713	HL13402	●	●	●	●	X	X	X	X
S1	GTX635708	GT263	X	○	X	Not Tested	X	X	X	X
S2	GTX632604	1A9	●	●	○	●	○	○	●	●
S2	GTX635693	HL237	○	●	X	●	●	●	●	●

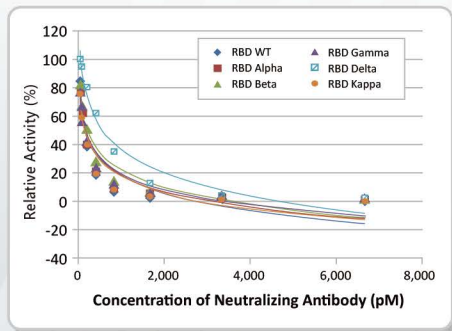
Recombinant spike proteins (trimer) derived from different SARS-CoV-2 variants were assayed by indirect ELISA using the specified GeneTex monoclonal antibodies.

- Strong detection. Defined as OD450 value >1 when 1µg/ml protein was used.
- Weak detection. Defined as OD450 value >1 when 4µg/ml protein was used.
- X No detection. Defined as OD450 value <1 when 4µg/ml protein was used.

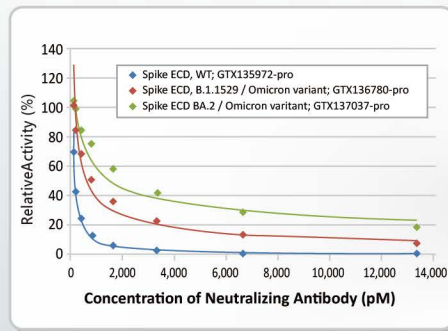
GeneTex, an antibody manufacturer for more than two decades, has augmented its extensive catalog of COVID-19 reagents with the production of recombinant proteins and antibodies targeting the viral spike (S) and nucleocapsid (N) proteins. Generated in its state-of-the-art recombinant antibody facility, the monoclonal antibodies display high affinity and specificity. They are validated for one or more applications, including WB, ICC/IF, ELISA, IHC, lateral flow, functional studies, and FCM. Recombinant proteins are available for the different variants and subvariants, including Omicron BA.4 and BA.5.

Neutralization / Binding Assay Kits

Orthogonal Validation

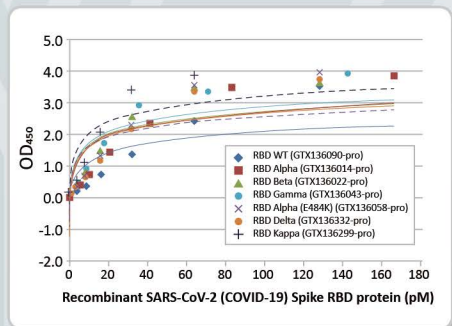


SARS-CoV-2 (COVID-19) Spike-ACE2 Binding / Neutralization Assay Kit (GTX536401)

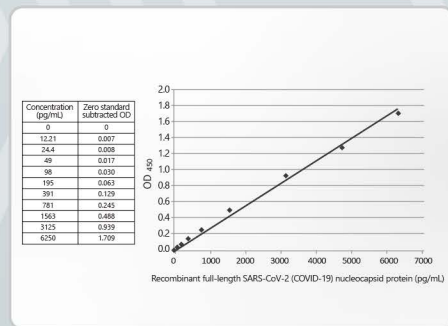


SARS-CoV-2 (COVID-19) Spike-ACE2 Binding / Neutralization Assay Kit (Omicron BA.1 / BA.2) (GTX537054)

Sandwich ELISA Kits



SARS-CoV-2 (COVID-19) Spike RBD Protein Sandwich ELISA Kit (GTX536267)



SARS-CoV-2 (COVID-19) Nucleocapsid Protein Sandwich ELISA Kit (GTX535824)

Recombinant Antibodies

Cat. No.	Product Name	Clonality	Applications
GTX635654	Spike S1 antibody [HL6]	Rec Rb mAb	WB, ICC/IF, IHC-P, FACS, ELISA, Sandwich ELISA, IHC-P (cell pellet)
GTX632604	Spike S2 antibody [1A9]	Ms mAb	WB, ICC/IF, IHC-P, FACS, IP, ELISA, EM, Sandwich ELISA, IHC-P (cell pellet)
GTX635693	Spike S2 antibody [HL237]	Rec Rb mAb	WB, ICC/IF, ELISA, Sandwich ELISA, IHC-P (cell pellet)
GTX635807	Spike RBD antibody [HL1014]	Rec Rb mAb	ICC/IF, ELISA, Sandwich ELISA
GTX635792	Spike RBD antibody [HL1003]	Rec Rb mAb	ICC/IF, ELISA, Neutralizing/Inhibition, Sandwich ELISA
GTX635686	Nucleocapsid antibody [HL448]	Rec Rb mAb	WB, ICC/IF, IHC-P, ELISA, Lateral Flow, Sandwich ELISA, IHC-P (cell pellet)
GTX635689	Nucleocapsid antibody [HL5511]	Rec Rb mAb	WB, ICC/IF, ELISA, Lateral Flow, Sandwich ELISA, IHC-P (cell pellet)
GTX636915	SARS-CoV-2 (COVID-19) Envelope antibody [HL1443]	Rec Rb mAb	WB, ICC/IF
GTX636245	SARS-CoV-2 (COVID-19) Membrane antibody [HL1087]	Rec Rb mAb	WB, ICC/IF
GTX636901	nsp1 antibody [HL1435]	Rec Rb mAb	WB
GTX636811	nsp2 antibody [HL1371]	Rec Rb mAb	WB, ICC/IF
GTX135589	nsp3 antibody	Rb pAb	WB, ICC/IF, IHC-P (cell pellet)
GTX135648	nsp5 (3CLpro) antibody	Rb pAb	WB
GTX636719	nsp7 antibody [HL1301]	Rec Rb mAb	WB, ICC/IF, IHC-P (cell pellet)
GTX632696	nsp8 antibody [5A10]	Ms mAb	WB, ICC/IF, IHC-Fr, FACS
GTX636997	nsp8 antibody [HL1523]	Rec Rb mAb	WB, ICC/IF
GTX636839	nsp9 antibody [HL1399]	Rec Rb mAb	WB, ICC/IF, IHC-P (cell pellet)
GTX636819	nsp10 antibody [HL1379]	Rec Rb mAb	WB, ICC/IF
GTX135742	nsp11 antibody	Rb pAb	WB, ICC/IF
GTX636881	nsp12 antibody [HL1415]	Rec Rb mAb	WB, ICC/IF, IHC-P (cell pellet)
GTX636916	nsp12 / RdRP antibody [HL1444]	Rec Rb mAb	WB, ICC/IF, IHC-P (cell pellet)
GTX636917	nsp15 antibody [HL1445]	Rec Rb mAb	WB
GTX135739	SARS-CoV-2 (COVID-19) nsp16 antibody	Rb pAb	WB
GTX632602	ORF7a antibody [3C9]	Ms mAb	WB, ICC/IF
GTX636925	ORF7b antibody [HL1453]	Rec Rb mAb	WB, ICC/IF
GTX135591	ORF8 antibody	Rb pAb	WB, ICC/IF, IHC-P (cell pellet)
GTX136053	ORF9b antibody	Rb pAb	WB

Selected Recombinant Proteins

Cat. No.	Product Name	Expression System	Applications
GTX135972-pro	Spike (ECD) protein, His tag (active)	HEK293	WB, ELISA, Functional Assay, Sandwich ELISA
GTX136059-pro	Spike (ECD) Protein, B.1.1.7 / Alpha variant, His tag (active)	HEK293	WB, ELISA, Functional Assay
GTX136061-pro	Spike (ECD) Protein, B.1.351 / Beta variant, His tag (active)	HEK293	WB, ELISA, Functional Assay, Sandwich ELISA
GTX136091-pro	Spike (ECD) Protein, P.1 / Gamma variant, His tag (active)	HEK293	WB, Binding Assay, ELISA, Sandwich ELISA
GTX136432-pro	Spike (ECD) Protein, B.1.617.2 / Delta variant, His tag (active)	HEK293	WB, ELISA, Functional Assay, Sandwich ELISA
GTX136780-pro	Spike (ECD) Protein, Omicron / BA.1 variant, His tag	HEK293	WB, ELISA, Sandwich ELISA
GTX137037-pro	Spike (ECD) Protein, Omicron / BA.2 variant, His tag	HEK293	Binding Assay, WB, ELISA
GTX137114-pro	Spike (ECD) Protein, Omicron / BA.2.12.1 variant, His tag	HEK293	WB, ELISA, Sandwich ELISA
GTX137113-pro	Spike (ECD) Protein, Omicron / BA.4 / BA.5 variant, His tag	HEK293	WB, ELISA, Sandwich ELISA
GTX137098-pro	Spike RBD Protein, Omicron / BA.4 / BA.5 variant, His tag	HEK293	WB, ELISA, Sandwich ELISA
GTX135592-pro	Nucleocapsid protein, His tag	HEK293	WB, ELISA, Sandwich ELISA
GTX136779-pro	Nucleocapsid protein, Omicron / BA.1 variant, His tag	HEK293	WB, ELISA, Sandwich ELISA