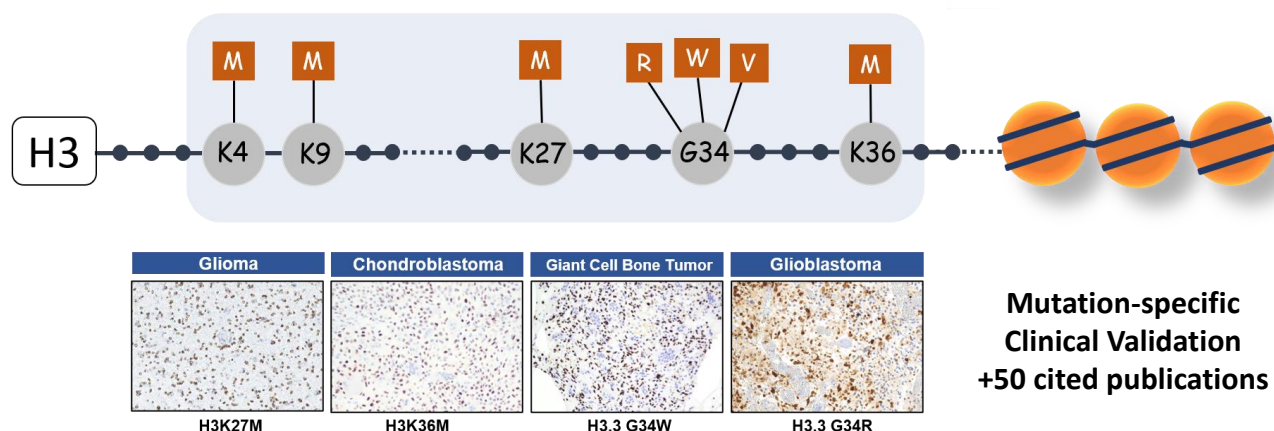


Human Histone H3 Mutation Antibodies

Histone mutations have been identified in multiple cancers and demonstrated potential as a useful diagnostic tool. Our Histone Mutation Antibodies have been extensively validated in a variety of applications, including IHC, WB, ICC, ELISA, and ChIP. Histone H3 K27M mutation is linked to diffuse midline glioma, and H3 K36M is closely associated with chondroblastoma. H3.3 G34 mutations are common in giant cell tumors of bone and glioblastoma.



**Mutation-specific
Clinical Validation
+50 cited publications**

Product Name	Type	Catalog No.	Clone	Application	Pack Size
H3 K36M	Rabbit mAb	31-1085-00-S/L	RM193	WB, IHC, ELISA, ICC, ChIP	100µL/400µL
H3 K27M	Rabbit mAb	31-1175-00-S/L	RM192	WB, IHC, ELISA, ICC	100µL/400µL
H3 K9M	Rabbit mAb	31-1160-00-S/L	RM191	WB, IHC, ELISA, ICC	100µL/400µL
H3 K4M	Rabbit mAb	31-1250-00-S/L	RM363	WB, IHC, ELISA, ICC	100µL/400µL
H3.3 G34W	Rabbit mAb	31-1145-00-S/L	RM263	WB, IHC, ELISA, ICC, ChIP	100µL/400µL
H3.3 G34R	Rabbit mAb	31-1120-00-S/L	RM240	WB, IHC, ELISA, ICC, ChIP	100µL/400µL
H3.3 G34V	Rabbit mAb	31-1193-00-S/L	RM307	WB, IHC, ELISA, ICC	100µL/400µL

All products are "FOR RESEARCH USE ONLY, NOT FOR USE IN DIAGNOSTIC PROCEDURES".

Related products:

31-1325-MP - Histone H3.3 Mutation Antibody Panel (Mutated G34W, G34R, G34V)

31-1326-MP - Histone H3 Mutation Antibody Panel (Mutated K4M, K9M, K27M, K36M)

31-1327-MP - Histone H3 Mutation (Mutated K4M, K9M, K27M, K36M) + H3.3 Mutation (Mutated G34W, G34R, G34V) Antibody Panel