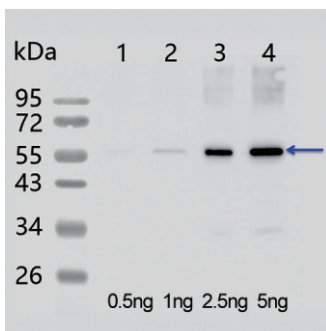


Tag ANTIBODIES

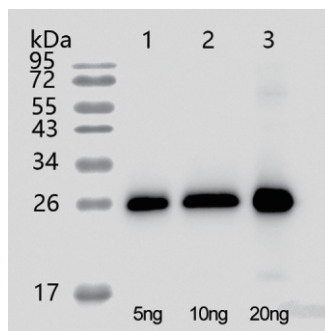
Epitope Tag, known as antigenic epitope, also called antigenic determinant, is a special region or group that determines the antigen specificity, and it is a structure or a sequence specially binding to antibodies. With the development of biological technology, the researchers can construct the fusion protein containing the target gene and epitope tag by the DNA recombination technology, and then identify and purify the fusion protein using the specific tag antibody to reach the requirement of scientific research.

The main products of tag antibodies :

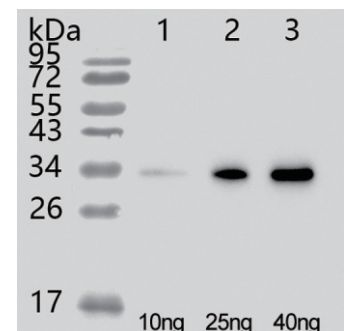
| Cat. No. | Product Name | Clonality | Host | Applications | Size | Price(\$) |
|----------|-----------------------|------------|--------|--------------|-------|-----------|
| PHY5000 | DYKDDDDK tag antibody | Polyclonal | Rabbit | WB | 150ug | 318 |
| PHY5001 | His tag antibody | Polyclonal | Rabbit | WB | 150ug | 318 |
| PHY5005 | c-Myc tag antibody | Polyclonal | Rabbit | WB | 150ug | 318 |
| PHY0329 | MBP tag antibody | Polyclonal | Rabbit | WB | 150ug | 318 |
| PHY5009 | DYKDDDDK tag antibody | Monoclonal | Mouse | WB | 150ug | 388 |
| PHY5010 | His tag antibody | Monoclonal | Mouse | WB | 150ug | 388 |
| PHY5011 | HA tag antibody | Monoclonal | Mouse | WB | 150ug | 388 |
| PHY5012 | MBP tag antibody | Monoclonal | Mouse | WB | 150ug | 388 |
| PHY5013 | GST tag antibody | Monoclonal | Mouse | WB | 150ug | 388 |
| PHY5014 | c-Myc tag antibody | Monoclonal | Mouse | WB | 150ug | 388 |
| PHY5015 | Trx tag antibody | Monoclonal | Mouse | WB | 150ug | 388 |
| PHY5016 | E tag antibody | Monoclonal | Mouse | WB | 150ug | 388 |
| PHY5017 | RFP tag antibody | Monoclonal | Mouse | WB | 150ug | 388 |
| PHY5018 | V5 tag antibody | Monoclonal | Mouse | WB | 150ug | 388 |
| PHY5019 | HSV tag antibody | Monoclonal | Mouse | WB | 150ug | 388 |



WB HA / PHY5011



WB GST / PHY5013



WB RFP / PHY5013

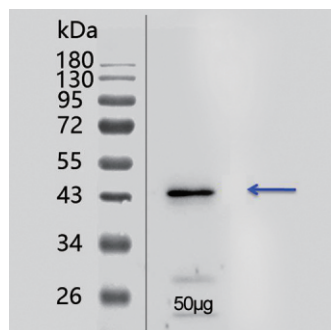
Research Use Only

Loading Controls ANTIBODIES

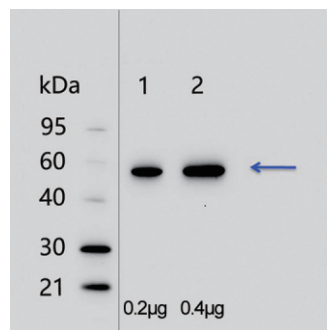
Loading controls are essential for proper interpretation of western blots. They can be used to normalize the levels of protein detected by confirming that protein loading is the same across the gel. Loading controls are usually proteins that exhibit high-level, constitutive expression in the cell type or sample you are examining. This ensures constant expression levels. Thus "housekeeping genes" are frequently chosen for use as loading controls. It is also important that the protein chosen as a loading control has a different molecular weight than the protein of interest so that the bands are distinct and expression levels quantifiable.

The main products of loading control detection antibodies :

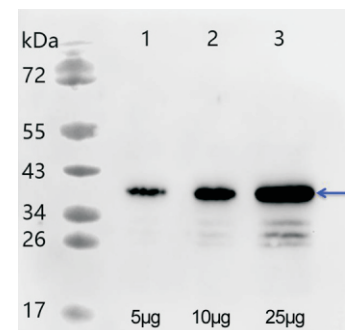
| Cat. No. | Abbreviation | Product Name | Species | Applications | Size | Price(\$) |
|----------|------------------------|---------------------------------------------------------------|-----------------------------|--------------|-------|-----------|
| PHY0002 | Actin Antibody | Actin | <i>Arabidopsis thaliana</i> | WB, ELISA | 150ug | 318 |
| PHY0091 | Tubulin alpha Antibody | Tubulin alpha chain | <i>Arabidopsis thaliana</i> | WB, ELISA | 150ug | 318 |
| PHY0223 | Tubulin beta Antibody | Tubulin beta chain | <i>Arabidopsis thaliana</i> | WB, ELISA | 150ug | 318 |
| PHY0303A | GAPDH Antibody | Glyceraldehyde-3-phosphate dehydrogenase GAPC2 | <i>Arabidopsis thaliana</i> | WB, ELISA | 150ug | 388 |
| PHY0057 | PsbA Antibody | D1 subunit of Photosystem II, N-terminal (Chloroplast marker) | <i>Arabidopsis thaliana</i> | WB, ELISA | 150ug | 318 |
| PHY0096A | RbcL Antibody | RbcL subunit of RuBisCO (Chloroplast marker) | <i>Arabidopsis thaliana</i> | WB, ELISA | 150ug | 388 |
| PHY0077 | UGPase Antibody | UDP-glucose pyrophosphorylase | <i>Arabidopsis thaliana</i> | WB, ELISA | 150ug | 318 |
| PHY0033 | H3 Antibody | Histone H3 (Nuclear marker) | <i>Arabidopsis thaliana</i> | WB, ELISA | 150ug | 318 |
| PHY0070 | Sec21p Antibody | gamma subunit, COP vesicles (Golgi marker) | <i>Arabidopsis thaliana</i> | WB, ELISA | 150ug | 318 |
| PHY0168 | PEX14 Antibody | Peroxisomal marker | <i>Arabidopsis thaliana</i> | WB, ELISA | 150ug | 318 |
| PHY0016 | COXII Antibody | Cytochrome oxidase subunit II (Mitochondrial marker) | <i>Arabidopsis thaliana</i> | WB, ELISA | 150ug | 318 |



WB Actin / PHY0002



WB RbcL / PHY0096A



WB GAPDH / PHY0303A

Research Use Only