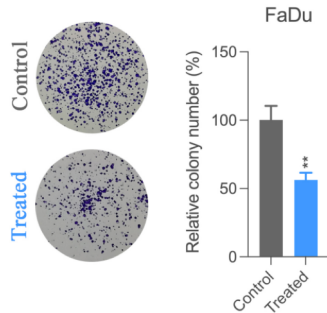


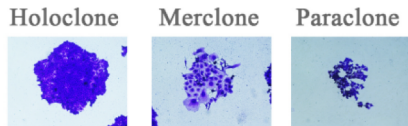
# CrystalStain, Cell Staining Solution



**Compatible:** A frequently used reagent to visualize cells in cell culture applications like single cell colony assay, Transwell migration assay or Transwell invasion assay.

**Ease of use:** Ready to use for visualization of cells.

**Quick:** Get results in approximately half an hour.



To visit our website,  
please scan the QR code

