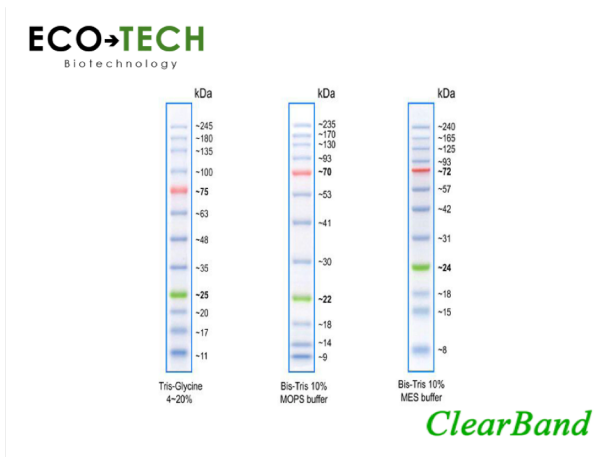




## ClearBand Prestained Protein Marker



**Wide range:** 12 pre-stained proteins covering a wide molecular weight range from 10 to 245 kDa

**Ease of use:** two reference bands (one green and one red band at 25 kDa and 75 kDa respectively)

**Quick:** Ready-to-load protein standard

To visit our website,  
please scan the QR code

