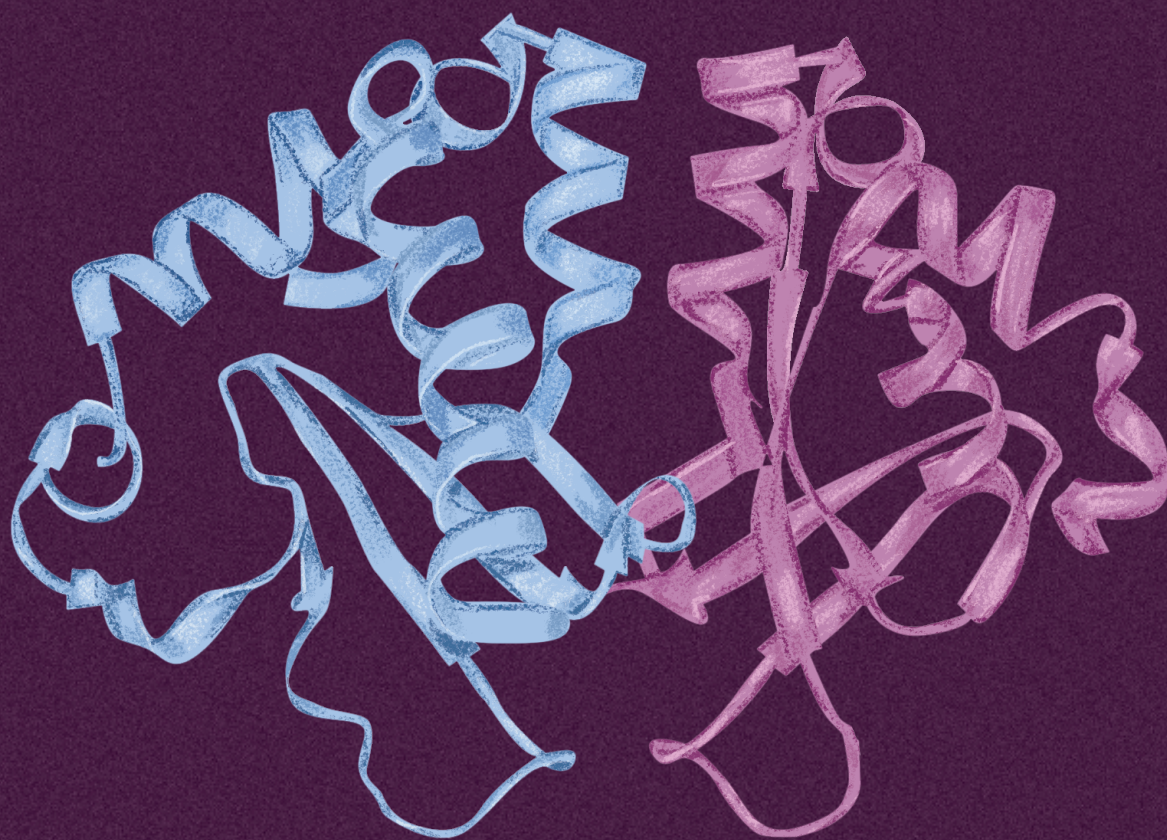
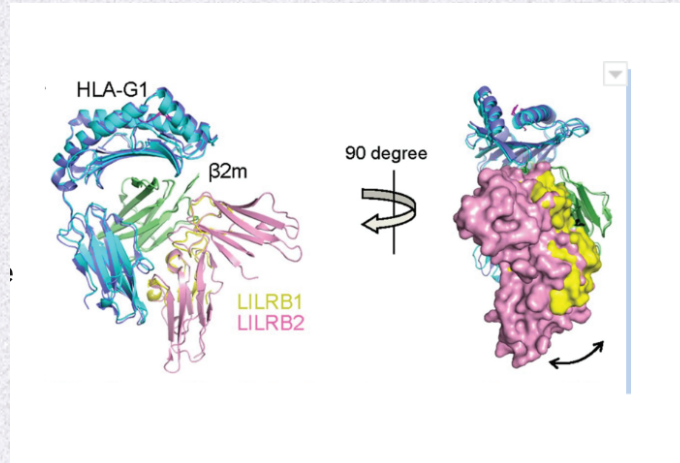


HLA-G & LILRB Recombinant Proteins



HLA-G, like other immune checkpoints, mediates its function by binding to receptors on immune cells. The known receptors are from the LILRB (suppressing) and LILRA (activating) families. When HLA-G binds to LILRBs, tumor cells can escape the surveillance of the immune system.

KACTUS has developed a series of LILR family and HLA-G proteins in various forms, with different tags, and of multiple species to meet the needs of our customers. Contact us to speak with a specialist, or check our catalog to see what products we have available.



Example Targets

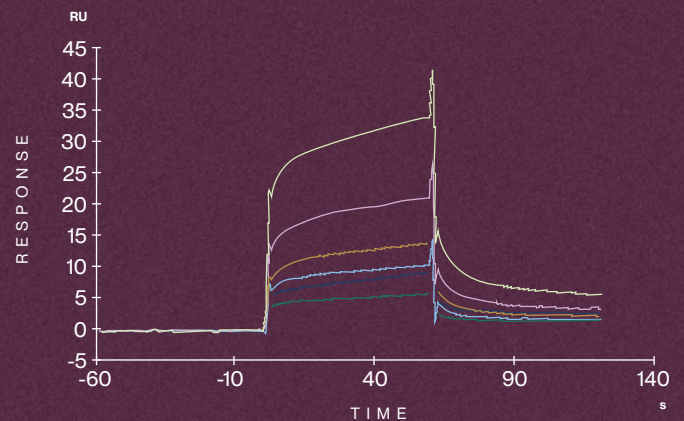
LILRBs
LILRAs
HLA-G
APOE3
APOE4

Tags

▪ His ▪ Avi ▪ Fc ▪ mFc
Biotinylated and non-biotinylated

Species

▪ Human ▪ Cynomolgus ▪ Rhesus macaque



SPR assay (Biacore T200) shows human TREM2, hFc tag captured on CM5 chip via protein A binds biotinylated human APOE3, His tag. The affinity constant is 1.41 μ M.

www.stratech.co.uk

+44 (0) 1638 782600

orders@stratech.co.uk

 @stratech_uk

 @stratechscientifictd

 @stratech-scientific-ltd