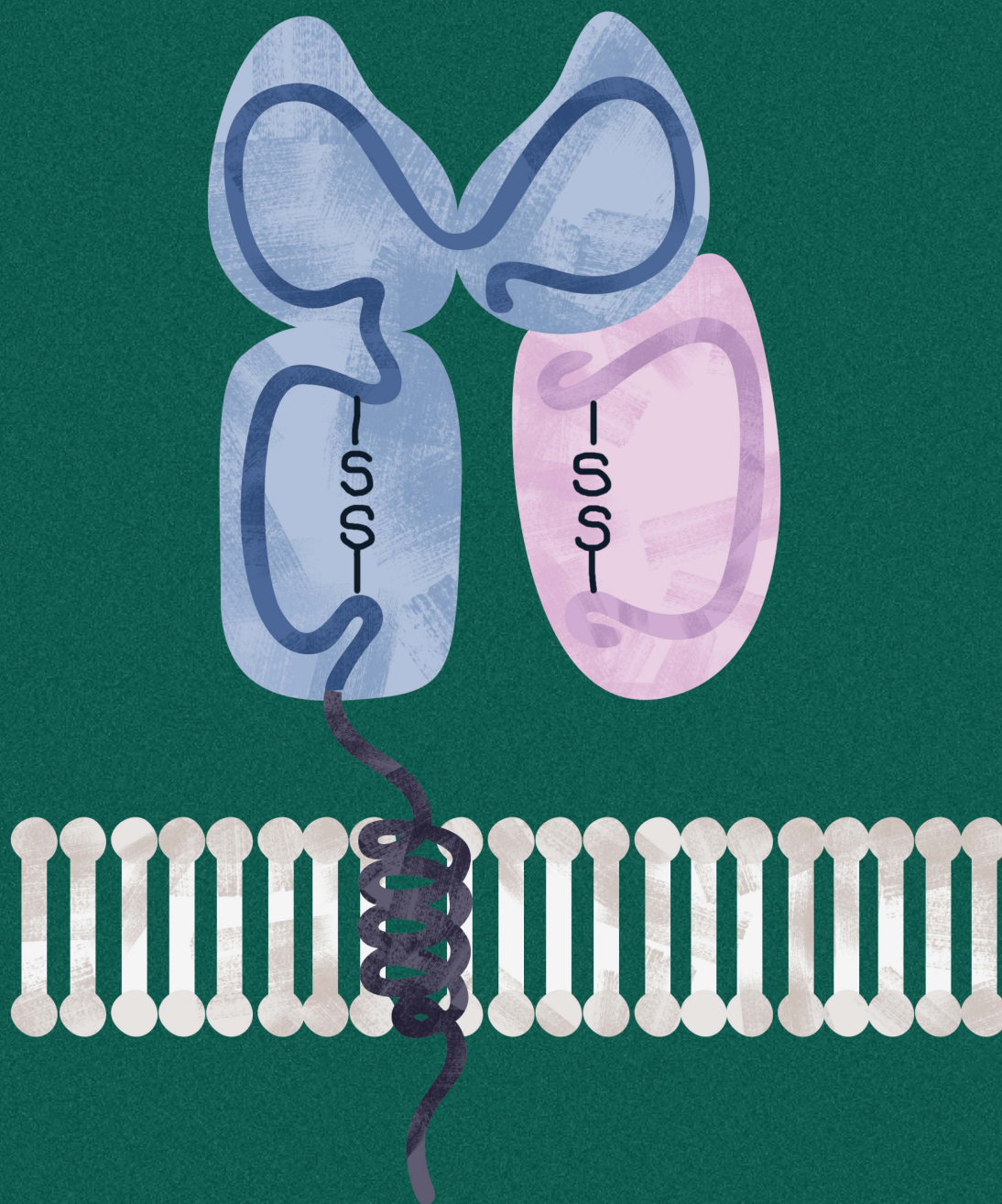
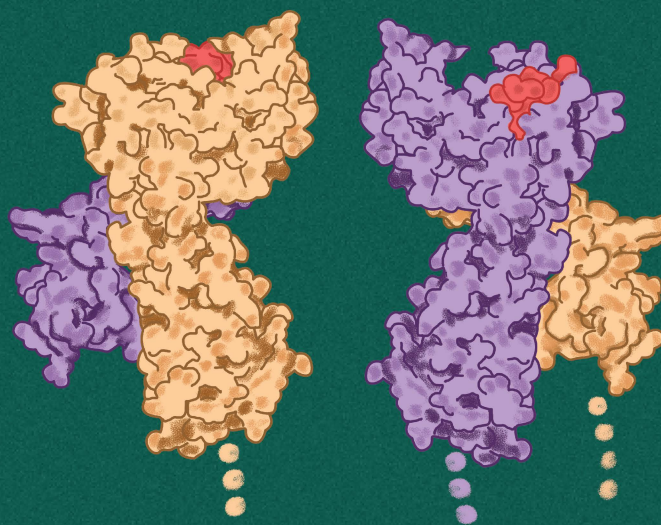


MHC-I Complexes



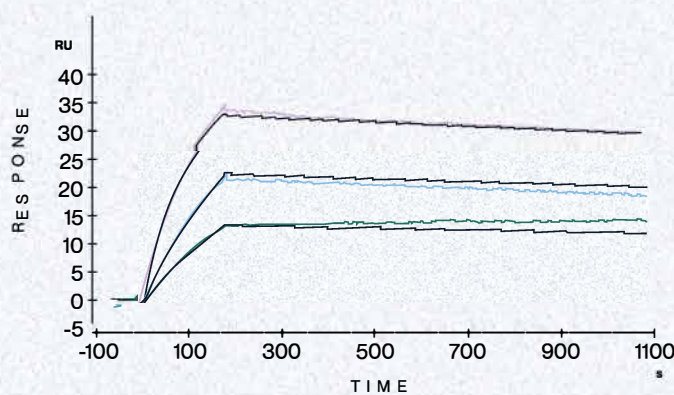
T lymphocytes, key mediators of the adaptive immune response, are activated when their T-cell receptors (TCRs) interact with cognate antigenic peptides displayed by major histocompatibility complex molecules (MHC).

KACTUS has developed a method to express MHC-I in various forms using mammalian Expi293 cells allowing post-translational modification, native conformation, and low endotoxin levels. This provides a superior product for experiments such as immunization, TCR-T, SPR, etc. Monomer, tetramer, biotinylated, and fluorescent-labeled options are available.



Example available targets

NY-ESO-1	KRAS
HPV16	MAGE-A3
GP100	Survivin
AFP	LMP2
P53	HBV
DSG3	CT83



SPR assay (Biacore T200) using anti-hFc IgG capture anti-NY-ESO-1 (HLA-A*02:01) antibody, human NY-ESO-1 (HLA-A*02:01) tetramer as analyte. The affinity constant is 0.15 nM.

www.stratech.co.uk
+44 (0) 1638 782600
orders@stratech.co.uk

@stratech_uk
 @stratechscientifictd
 @stratech-scientific-ltd