

- Highly cited
- Bulk stock and fast shipping
- High Affinity and Specificity

COMMITTED TO LIFE SCIENCE RESEARCH

**HOT RESEARCH
SELECTION ANTIBODIES**

FOREWORD

AFFINITY BIOSCIENCES GROUP LTD is the R&D and production center of Affinity Biosciences (Affinity) brand in China. At present, the company has built a modern comprehensive laboratory, aseptic operation room, SPF animal room, and is equipped with advanced flow cytometer, laser confocal, digital scanning of pathological sections and other experimental instruments. Antibody sales channels cover the whole world, and Affinity has become an antibody service provider that integrates R&D, production, testing and sales.

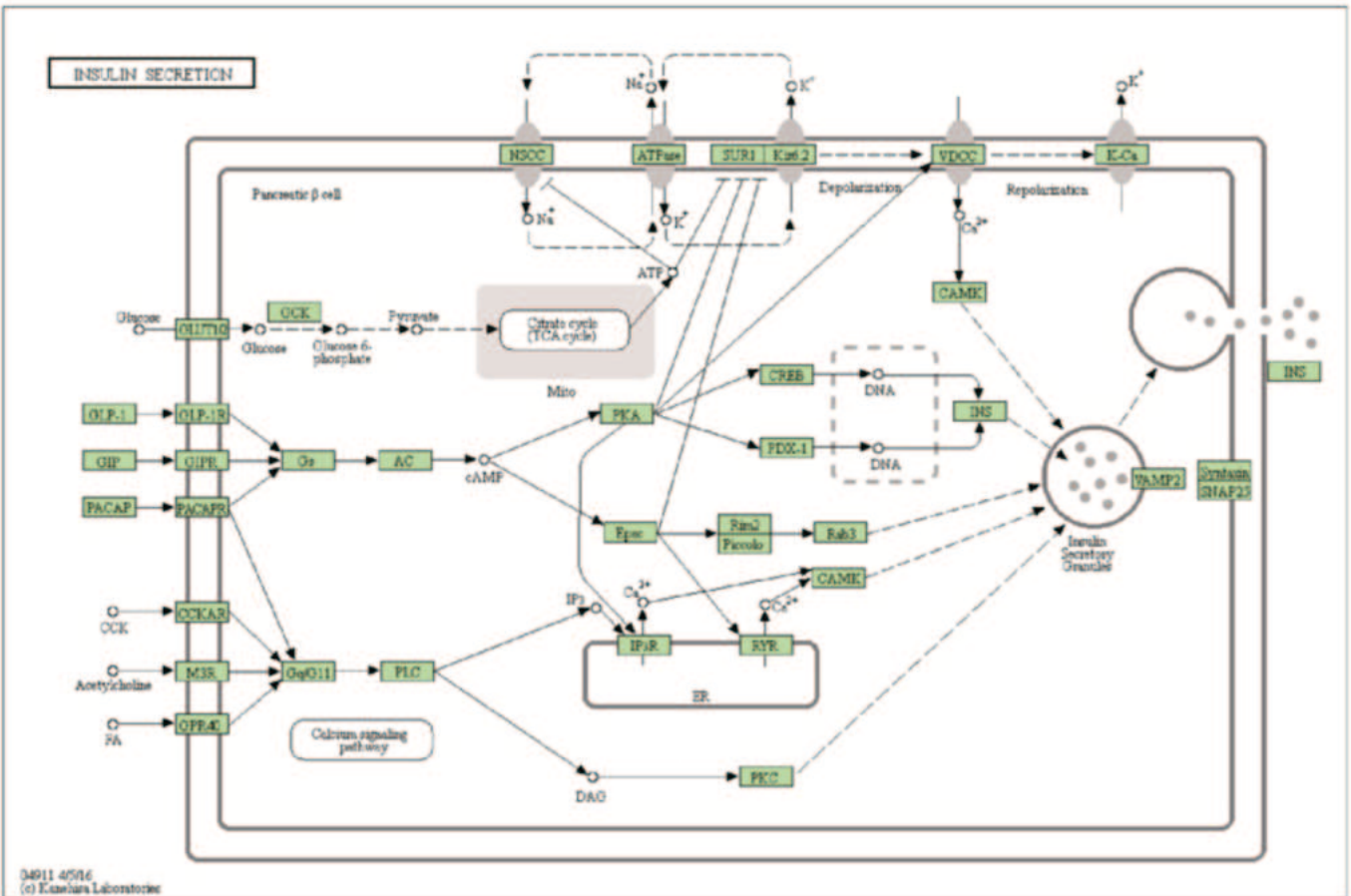
Since 2018, Affinity has consecutively won the 2019 and 2020 CiteAb Award and has become the first company to ever win CiteAb Awards 'Antibody supplier to watch' a second year in a row.

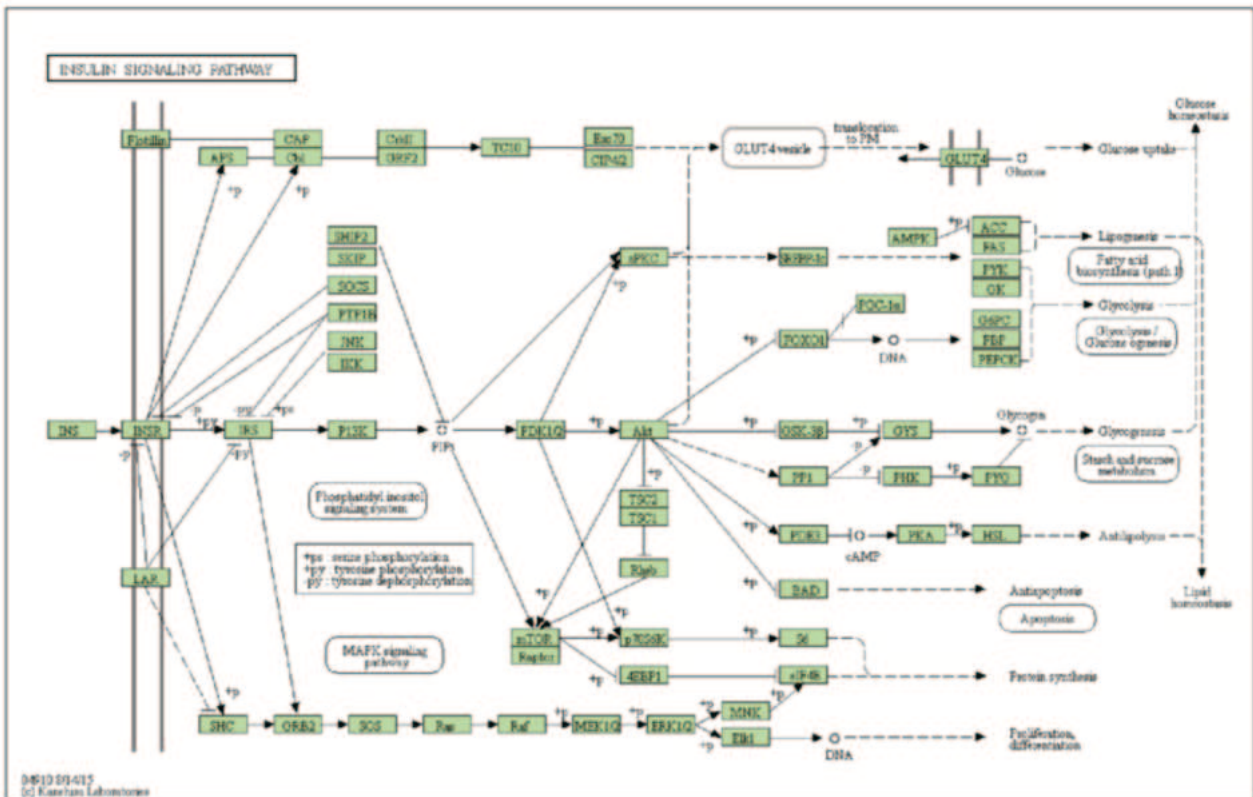
In July 2022, Affinity announced the successful development of the AFfirm technology platform, which is more than 10 times more efficient than the traditional mouse monoclonal antibody platform. Since its inception, Affinity has been committed to providing the highest quality antibody products and services to researchers around the world. Affinity has developed more than 15,000 kinds of antibodies and has 16,000 kinds of peptides in stock. Among them, phospho-specific antibodies are the world calling card of Affinity brand, and the number of published citations on phospho-specific antibodies is in the world top position.



Cell Metabolism Study

Cellular metabolism is a general term for the ordered series of chemical reactions that occur within a cell to sustain life. These reactions allow organisms to grow and reproduce, maintain their structures, and respond to the external environment. Disturbances in cellular metabolism can lead to the development of many diseases, including obesity, diabetes, lipemia, and fatty liver. Diabetes has become a major threat to human health, the third leading cause of death after cardiovascular disease and cancer, and a hot research topic. Type 2 diabetes mellitus is a systemic metabolic disease caused by the body's inability to produce enough insulin or the body's inability to respond effectively to the insulin produced, and clinically characterized by hyperglycemia, hyperlipidemia, and hyperviscosity tendency. It tends to cause a number of complications, including retinopathy, renal failure, limb necrosis, stroke, and cardiovascular disease. Type 1 diabetes mellitus, insulin-dependent diabetes mellitus or juvenile diabetes mellitus, is caused by insulin deficiency and is associated with B-cell dysfunction. Type 2 diabetes mellitus, non-insulin-dependent diabetes mellitus or adult-onset diabetes mellitus, is characterized by insulin resistance and a relative decrease in insulin secretion. There is another type of diabetes, gestational diabetes, in which pregnant women with undiagnosed diabetes have high blood glucose levels. Of these, type 2 diabetes is the predominant type, accounting for about 90% of diabetes cases. There are many complex signaling pathways associated with diabetes, including the AMPK signaling pathway, the PI3K/Akt signaling pathway, the mTOR signaling pathway, the JAK-STAT signaling pathway, the ROS-ERK-NF-κB signaling pathway, the Wnt signaling pathway, and the IGF-1 signaling pathway.





• Hot-selling antibodies recommended

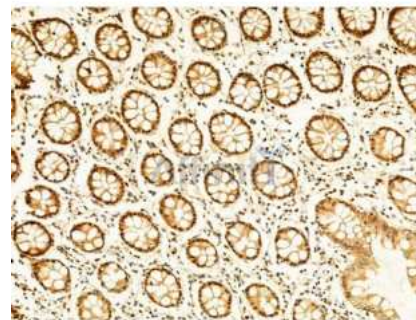
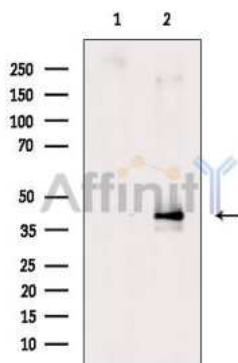
Phospho-CREB (Ser133) Antibody (Pub Med 23)

Catalog: AF3189

Application: WB IHC IF/ICC

Reactivity: Human, Mouse, Rat

Prediction: Pig, Bovine, Horse, Sheep, Rabbit, Dog, Chicken, Xenopus



Western blot analysis of extracts from H₂O₂ treated MCF7 cells, using Phospho-CREB (Ser133) Antibody. The lane on the left was treated with blocking peptide.

AF3189 at 1/100 staining Human normal tissues adjacent to colorectal cancer by IHC-P. The sample was formaldehyde fixed and a heat mediated antigen retrieval step in citrate buffer was performed. The sample was then blocked and incubated with the primary antibody at 4° C overnight. An HRP conjugated anti-Rabbit antibody was used as the secondary antibody.

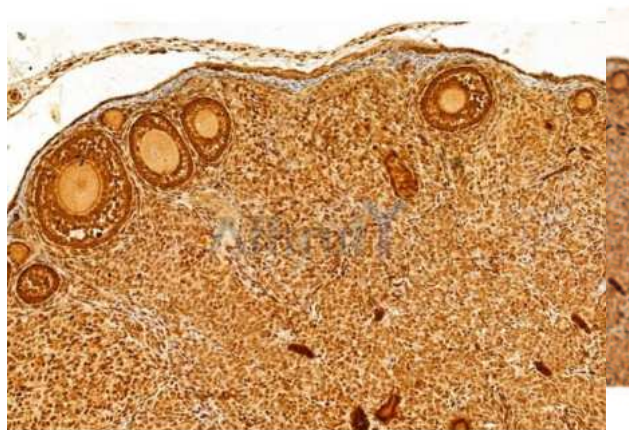
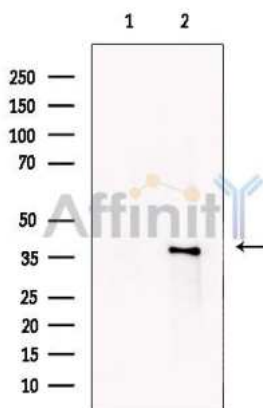
CREB Antibody (PubMed 16)

Catalog: AF6188

Application: WB IHC IF/ICC

Reactivity: Human, Mouse, Rat

Prediction: Pig, Bovine, Horse, Sheep, Rabbit, Dog, Chicken, Xenopus



Western blot analysis of extracts from GH4, using CREB Antibody. The lane on the left was treated with blocking peptide.

AF6188 at 1/100 staining Mouse ovary tissue by IHC-P. The sample was formaldehyde fixed and a heat mediated antigen retrieval step in citrate buffer was performed. The sample was then blocked and incubated with the primary antibody at 4° C overnight. An HRP conjugated anti-Rabbit antibody was used as the secondary antibody.

• Related antibodies recommended

Cat#	Des#	Reactivity	Application	Cited
AF6432	4E-BP1 Ab	Human, Mouse, Rat	WB,IHC,IF/ICC	◆◆
AF6431	4E-BP1 Ab	Human, Mouse, Rat	WB,IHC,IF/ICC	◆◆
AF6421	ACC1 Ab	Human, Mouse, Rat	WB,IHC,IF/ICC	◆◆
AF2305	Acetyl-FOXO1A (Lys294) Ab	Human, Mouse, Rat, Monkey	WB,IHC	◆◆
AF6422	AMPK alpha 1 Ab	Human, Mouse, Rat	WB,IHC,IF/ICC	◆◆
AF6423	AMPK alpha Ab	Human, Mouse, Rat	WB,IHC,IF/ICC	◆◆◆
DF6361	AMPK alpha Ab	Human, Mouse, Rat	WB,IHC,IF/ICC	◆◆
DF6008	ATF4 Ab	Human, Mouse, Rat	WB,IHC,IF/ICC	◆◆
AF5416	ATF4 Ab	Human, Mouse	WB	◆◆
DF2267	CACNA1C Ab	Human, Mouse, Rat	WB	◆◆

Cat#	Des#	Reactivity	Application	Cited
DF2907	CaMKII Ab	Human, Mouse, Rat	WB,IHC,IF/ICC	◆◆
AF6493	CaMKII alpha/delta Ab	Human, Mouse, Rat	WB,IHC,IF/ICC	◆◆
AF6065	C-RAF Ab	Human, Mouse, Rat	WB,IF/ICC	◆◆
AF6188	CREB Ab	Human, Mouse, Rat	WB,IHC,IF/ICC	◆◆◆
AF6189	CREB Ab	Human, Mouse, Rat	WB,IHC,IF/ICC	◆◆
AF0155	ERK1/2 Ab	Human, Mouse, Rat, Pig, Zebrafish, Bovine, Horse, Sheep, Dog, Monkey, Fish	WB,IHC,IF/ICC,IP	◆◆◆◆
AF6240	ERK1/2 Ab	Human, Mouse, Rat	WB	◆◆
DF6106	FASN Ab	Human, Mouse, Rat	WB,IHC	◆◆
AF6416	FOXO1A Ab	Human, Mouse, Rat	WB,IHC,IF/ICC	◆◆
AF5386	Glut 4 Ab	Human, Mouse, Rat	WB,IHC	◆◆
AF0173	GLUT1 Ab	Human, Mouse, Rat	WB,IHC,IF/ICC	◆◆
DF7510	GLUT2 Ab	Human, Mouse, Rat	WB,IHC	◆◆
AF5016	GSK3 beta Ab	Human, Mouse, Rat	WB,IHC,IF/ICC,IP	◆◆◆
AF7814	GSK3 beta Ab	Human, Mouse, Rat	WB	◆◆
BF0695	GSK3B Ab	Human, Mouse, Rat, Monkey	WB,IHC,IF/ICC,ELISA,FACS	◆◆
DF6176	Hexokinase II Ab	Human, Mouse, Rat	WB,IHC,IF/ICC	◆◆
AF6403	HSL Ab	Human, Mouse, Rat	WB,IHC,IF/ICC	◆◆
AF6014	IKK alpha/ beta Ab	Human, Mouse, Rat	WB,IHC,IF/ICC	◆◆
AF6009	IKK-beta Ab	Human, Mouse, Rat, Monkey	WB,IHC,IF/ICC	◆◆◆
AF6099	Insulin Receptor beta Ab	Human, Mouse, Rat, Monkey	WB	◆◆
AF6273	IRS1 Ab	Human, Mouse, Rat, Monkey	WB,IHC,IF/ICC	◆◆
DF7534	IRS2 Ab	Human, Mouse, Rat	WB,IHC	◆◆
AF6318	JNK1/2/3 Ab	Human, Mouse, Rat, Pig	WB,IF/ICC	◆◆◆
AF6385	MEK1/2 Ab	Human, Mouse, Rat	WB,IHC,IF/ICC	◆◆◆
AF6308	mTOR Ab	Human, Mouse, Rat, Fish	WB,IHC,IF/ICC	◆◆◆◆
AF7803	mTOR Ab	Human, Mouse, Rat	WB,IF/ICC	◆◆
BF8004	p44/42 MAPK (Erk1/2) mAb	Human, Mouse, Rat	WB,IHC,ELISA	◆◆
AF3431	P-4E-BP1 (Thr36) Ab	Human, Mouse, Rat	WB,IHC,IF/ICC	◆◆
AF3432	P-4E-BP1 (Thr45) Ab	Human, Mouse, Rat	WB,IHC,IF/ICC	◆◆
AF6226	p70 S6 Kinase Ab	Human, Mouse, Rat	WB,IHC,IF/ICC	◆◆◆
AF3421	P-ACC1 (Ser79) Ab	Human, Mouse, Rat	WB,IHC,IF/ICC	◆◆
AF8355	P-AKT1 (Ser473) Ab	Human, Mouse, Rat	WB,IF/ICC	◆◆
AFO832	P-AKT1 (Thr308) Ab	Human, Mouse, Rat	WB,IHC,IF/ICC	◆◆
AF3423	P-AMPK alpha (Thr172) Ab	Human, Mouse, Rat	WB,IHC,IF/ICC	◆◆◆◆
AF6261	pan-AKT1/2/3 Ab	Human, Mouse, Rat, Monkey	WB,IHC,IF/ICC,IP	◆◆◆◆
AF6259	pan-AKT1/2/3 Ab	Human, Mouse, Rat, Monkey	WB,IHC,IF/ICC	◆◆
DF7208	pan-AKT1/2/3 Ab	Human, Mouse, Rat, Pig	WB,IF/ICC	◆◆
AF7427	P-BAD (Ser112) Ab	Human, Mouse, Rat	WB,IHC	◆◆
AF3493	P-CaMKII alpha/delta (Thr286) Ab	Human, Mouse, Rat	WB,IHC,IF/ICC	◆◆
AF3434	P-CaMKII beta/ gamma/ delta (Thr287) Ab	Human, Mouse, Rat	WB,IHC	◆◆
DF6770	PCK1 Ab	Human, Mouse, Rat	WB,IHC,IF/ICC	◆◆
AF3065	P-C-RAF (Ser338) Ab	Human, Mouse, Rat	WB,IF/ICC	◆◆
AF3189	P-CREB (Ser133) Ab	Human, Mouse, Rat	WB,IHC,IF/ICC,IP	◆◆◆
DF7170	PDX1 Ab	Human, Mouse, Rat	WB,IHC	◆◆
AF3240	P-ERK1/2 (Thr202) Ab	Human, Mouse, Rat	WB	◆◆

Cat#	Des#	Reactivity	Application	Cited
AF1015	P-ERK1/2 (Thr202/Tyr204) Ab	Human, Mouse, Rat	WB,IHC,IF/ICC	★★★★
AF8208	P-ERK1/2 (Thr202+Tyr204/Thr185+Tyr187) Ab	Human, Mouse, Rat, Monkey	WB,IHC	★★
AF1014	P-ERK1/2 (Tyr204) Ab	Human, Mouse, Rat, Bovine	WB,IHC	★★
AF3416	P-FOXO1A (Ser329) Ab	Human, Mouse, Rat	WB,IHC,IF/ICC	★★
AF5395	PGC1 alpha Ab	Human, Mouse, Rat	WB,IHC	★★
AF2016	P-GSK3 beta (Ser9) Ab	Human, Mouse, Rat, Monkey	WB,IHC,IF/ICC,IP	★★★
AF2350	P-HSL (Ser563) Ab	Human, Mouse, Rat	WB,IHC	★★
AF8026	P-HSL (Ser660) Ab	Human, Mouse, Rat	WB,IHC,IF/ICC	★★
AF5112	PI3 kinase P110 alpha Ab	Human, Mouse, Rat	WB,IHC,IF/ICC	★★
AF6241	PI3K p85 alpha Ab	Human, Mouse, Rat	WB,IHC,IF/ICC	★★★
AF6242	PI3K p85/p55 Ab	Human, Mouse, Rat, Monkey	WB,IHC,IF/ICC	★★
AF3014	P-IKK alpha/ beta (Ser176/Ser177) Ab	Human, Mouse, Rat	WB,IHC,IF/ICC	★★
AF3013	P-IKK alpha/ beta (Ser180/Ser181) Ab	Human, Mouse, Rat	WB,IHC,IF/ICC	★★
AF3010	P-IKK beta (Tyr199) Ab	Human, Mouse, Rat, Monkey	WB,IHC,IF/ICC	★★
AF3099	P-Insulin Receptor beta (Tyr1361) Ab	Human, Mouse, Rat	WB,IHC,IF/ICC	★★
AF3272	P-IRS1 (Ser307) Ab	Human, Mouse, Rat, Monkey	WB,IHC,IF/ICC	★★★
AF3318	P-JNK1/2/3 (Thr183+Tyr185) Ab	Human, Mouse, Rat	WB,IHC,IF/ICC	★★★★
AF3320	P-JNK1/2/3 (Tyr185) Ab	Human, Mouse, Rat	WB,IHC,IF/ICC	★★
AF7746	PKA alpha/beta/gamma CAT Ab	Human, Mouse, Rat, Monkey	WB,IHC	★★
AF7746	PKA alpha/beta/gamma CAT Ab	Human, Mouse, Rat, Monkey	WB,IHC	★★
AF6196	PKC alpha Ab	Human, Mouse, Rat	WB,IHC,IF/ICC	★★
AF6197	PKC-pan Ab	Human, Mouse, Rat	WB,IHC,IF/ICC	★★
AF8035	P-MEK1/2 (Ser218+Ser222/Ser222+Ser226) Ab	Human, Mouse, Rat	WB,IHC,IF/ICC	★★★
AF3308	P-mTOR (Ser2448) Ab	Human, Mouse, Rat, Fish	WB,IHC	★★★★
AF3309	P-mTOR (Ser2481) Ab	Human, Mouse, Rat	WB,IHC,IF/ICC	★★
AF3310	P-mTOR (Thr2446) Ab	Human, Mouse, Rat	WB	★★
AF3228	P-p70 S6 Kinase (Thr389/Thr412) Ab	Human, Mouse, Rat, Pig	WB,IHC,IF/ICC	★★★
AF0016	P-pan-AKT1/2/3 (Ser473) Ab	Human, Mouse, Rat, Monkey	WB,IHC,IF/ICC	★★★★
AF0908	P-pan-AKT1/2/3(Ser473) Ab	Human, Mouse, Rat, Bovine	WB,IHC,IF/ICC	★★
AF3263	P-pan-AKT1/2/3 (Ser473) Ab	Human, Mouse, Rat	WB,IHC,IF/ICC	★★
AF3262	P-pan-AKT1/2/3 (Thr308) Ab	Human, Mouse, Rat	WB,IHC,IF/ICC	★★★
AF3018	P-PDPK1(Ser241)Ab	Human, Mouse, Rat	WB,IHC	★★
AF3242	P-PI3K p85 (Tyr458)/p55 (Tyr199) Ab	Human, Mouse, Rat, Monkey	WB,IHC,IF/ICC	★★★
AF3241	P-PI3K p85 alpha (Tyr607) Ab	Human, Mouse, Rat, Pig	WB,IHC,IF/ICC	★★★★
AF7246	P-PKA alpha/beta/gamma CAT (Thr198) Ab	Human, Mouse, Rat	WB,IHC	★★
AF7246	P-PKA alpha/beta/gamma CAT (Thr198) Ab	Human, Mouse, Rat	WB,IHC	★★
AF3197	P-PKC-pan (Thr497) Ab	Human, Mouse, Rat	WB,IHC,IF/ICC	★★
AF3354	P-RPS6 (Ser235) Ab	Human, Mouse, Rat	WB,IF/ICC	★★
DF7527	Raptor Ab	Human, Mouse, Rat	WB,IHC,IF/ICC	★★
AF0247	RASH/RASK/RASN Ab	Human, Mouse, Rat	WB,IHC,IF/ICC	★★
AF6354	RPS6 Ab	Human, Mouse, Rat	WB,IF/ICC	★★
AF7831	RPS6 Ab	Human, Mouse, Rat	WB	★★
DF6133	SOCS3 Ab	Human, Mouse, Rat	WB,IHC	★★
AF6283	SREBP1 Ab	Human, Mouse, Rat, Pig, Sheep	WB,IHC,IF/ICC	★★★
AF4728	SREBP1 Ab	Human, Mouse, Rat	WB,IHC	★★



your first choice for scientific solutions

www.stratech.co.uk

+44 (0) 1638 782600

orders@stratech.co.uk

 @stratech_uk

 @stratechscientificltd

 @stratech-scientific-ltd

free delivery
for uk
universities



we offer a
full product
guarantee



outstanding
technical
support



AFFINITY BIOSCIENCES GROUP LTD

www.stratech.co.uk/affinity

