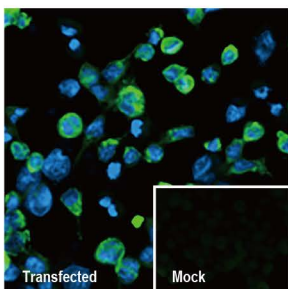


# Recombinant Monoclonal Antibodies Against G Protein-Coupled Receptors

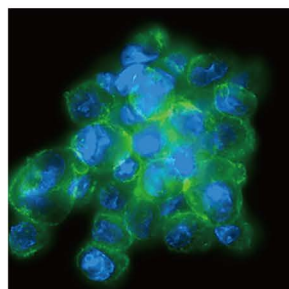
G protein-coupled receptors (GPCRs) represent the largest superfamily of cell surface transmembrane receptors in the human genome and one-third of prescribed drugs modulate GPCR activity. Therefore, developing high-quality GPCR antibodies is crucial for academic, clinical, and pharmaceutical research.

GeneTex is leveraging the advantages of its recombinant monoclonal antibody production system and enhanced "Five Pillar" validation strategies to produce a catalog of best-in-class GPCR antibodies to facilitate research. Meticulous immunogen sequence selection combined with knockout/knockdown testing, comparable antibodies, differential tissue expression, GPCR overexpression, and application-specific testing in immunohistochemistry, immunocytochemistry, and immunoblot are being performed to thoroughly validate these reagents.

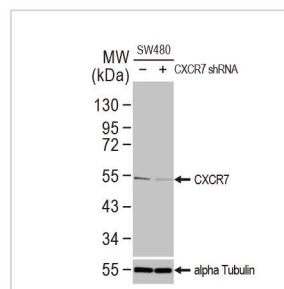
## New Recombinant Antibodies for GPCRs



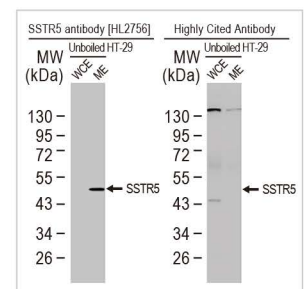
**FSH Receptor antibody [HL2784]** (GTX639652)



**CXCR2 antibody [HL2604]** (GTX639056)



**CXCR7 antibody [HL2189]** (GTX638193)



**SSTR5 antibody [HL2756]** (GTX639619)



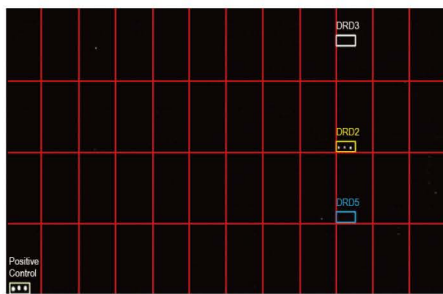


# Recombinant Monoclonal Antibodies Against GPCRs

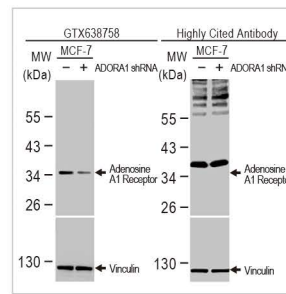
Class  
**A**

&  
Class  
**B**

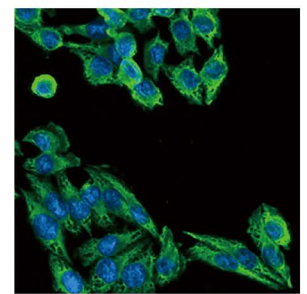
C Citation Support 
 R Recombinant 
 K KO/KD Validation 
 A Comparable Abs 
 O Orthogonal Validation 
 P Protein Overexpression



**Dopamine Receptor D2 antibody [HL1478]**  
(GTX636952)  
RAC



**Adenosine A1 Receptor antibody [HL2442]**  
(GTX638758)  
RKAO



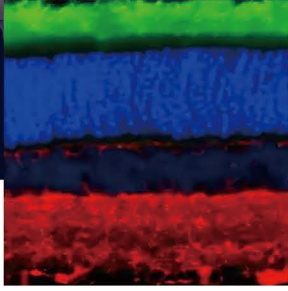
**MC1 Receptor antibody [HL1470]**  
(GTX636944)  
RKAO

## Highlighted GPCR Recombinant Antibodies

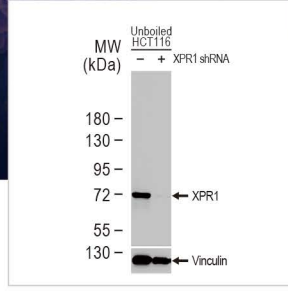
	Cat. No.	Product Name	Clonality	Reactivity	Applications
<span>RKAO</span>	GTX638758	Adenosine A1 Receptor antibody [HL2442]	Rec Rb mAb	Dog, Hu, Ms, Rat	WB, IHC-P
<span>RO</span>	GTX638885	AGTR1 antibody [HL2524]	Rec Rb mAb	Hu, Ms	WB, ICC/IF, IHC-P
<span>RO</span>	GTX638887	AGTR1 antibody [HL2526]	Rec Rb mAb	Hu, Ms	WB, ICC/IF
<span>RAC</span>	GTX638563	Calcium Sensing Receptor antibody [HL2357]	Rec Rb mAb	Cat, Hu, Ms, Rat	WB, IHC-P
<span>RO</span>	GTX640123	CCR10 antibody [HL2852]	Rec Rb mAb	Hu	WB
<span>RAC</span>	GTX638830	CCR4 antibody [HL2481]	Rec Rb mAb	Hu, Ms, Rat	WB, IHC-P
<span>RAC</span>	GTX638850	CCR4 antibody [HL2492]	Rec Rb mAb	Hu	WB, ICC/IF
<span>RKAO</span>	GTX637673	CD97 antibody [HL1924]	Rec Rb mAb	Dog, Hu	WB, ICC/IF, IHC-P
<span>RKAO</span>	GTX637674	CD97 antibody [HL1925]	Rec Rb mAb	Hu, Ms	WB, IHC-P, IP
<span>RO</span>	GTX639338	CXCR1 antibody [HL2674]	Rec Rb mAb	Hu, Ms, Rat	WB, IHC-P
<span>RAC</span>	GTX639056	CXCR2 antibody [HL2604]	Rec Rb mAb	Hu	WB, ICC/IF, IHC-P, Functional Assay
<span>RKAO</span>	GTX638646	CXCR4 antibody [HL2424]	Rec Rb mAb	Hu, Ms	WB, ICC/IF, IHC-P
<span>RO</span>	GTX638647	CXCR4 antibody [HL2425]	Rec Rb mAb	Hu, Ms, Rat	ICC/IF, IHC-P
<span>RKAO</span>	GTX639064	CXCR4 antibody [HL2612]	Rec Rb mAb	Dog, Hu, Ms	WB, ICC/IF
<span>RKAO</span>	GTX638193	CXCR7 antibody [HL2189]	Rec Rb mAb	Hu, Ms, Rat	WB, ICC/IF, IHC-P, IHC-Fr
<span>RO</span>	GTX639551	delta Opioid receptor antibody [HL2724]	Rec Rb mAb	Hu	IHC-P
<span>RO</span>	GTX639344	Dopamine Receptor D1 antibody [HL2680]	Rec Rb mAb	Hu	WB
<span>RAC</span>	GTX636952	Dopamine Receptor D2 antibody [HL1478]	Rec Rb mAb	Hu, Ms, Rat	WB, ICC/IF, IHC-P, Functional Assay
<span>RO</span>	GTX637063	Dopamine Receptor D2 antibody [HL1584]	Rec Rb mAb	Cat, Dog, Hu, Ms, Rat	WB, ICC/IF, IHC-P



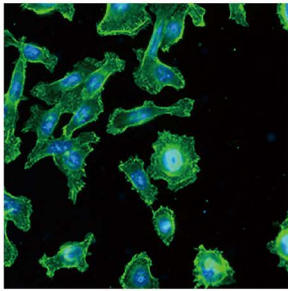




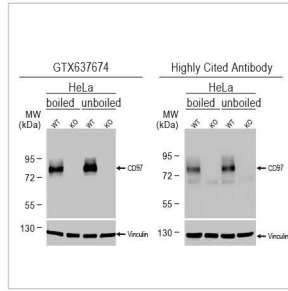
**Rhodopsin antibody [HL2668]** (GTX639332)



**XPR1 antibody [HL2631]** (GTX639087)



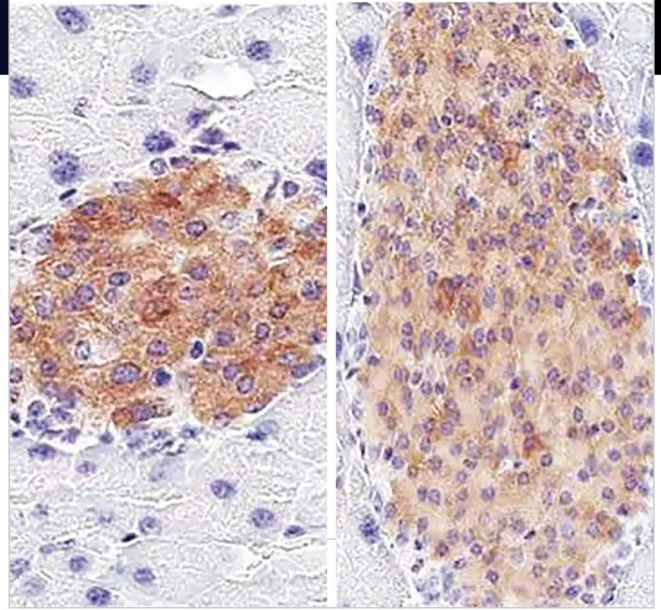
**CCR4 antibody [HL2492]** (GTX638850)



**CD97 antibody [HL1925]** (GTX637674)

**GLP1R antibody [HL2298]**

**Highly Cited Antibody**



**GLP1R antibody [HL2298]** (GTX638353)

## Highlighted GPCR Recombinant Antibodies

Cat. No.	Product Name	Clonality	Reactivity	Applications
GTX639328	FPRL1 antibody [HL2664]	Rec Rb mAb	Hu, Ms	WB, ICC/IF, IHC-P
GTX637274	Frizzled 9 antibody [HL1675]	Rec Rb mAb	Hu	WB
GTX639652	FSH Receptor antibody [HL2784]	Rec Rb mAb	Hu, Ms	WB, ICC/IF
GTX638352	GLP1R antibody [HL2297]	Rec Rb mAb	Hu, Ms, Rat	WB, IHC-P
GTX638353	GLP1R antibody [HL2298]	Rec Rb mAb	Ms	WB, IHC-P
GTX639094	GnRHR antibody [HL2638]	Rec Rb mAb	Hu, Ms, Rat	WB, IHC-P
GTX636944	MC1 Receptor antibody [HL1470]	Rec Rb mAb	Hu, Ms, Rat	WB, ICC/IF
GTX636945	MC1 Receptor antibody [HL1471]	Rec Rb mAb	Hu, Ms, Rat	WB, ICC/IF, IHC-P, IHC-Fr
GTX638912	mGluR5 antibody [HL2543]	Rec Rb mAb	Hu, Ms, Rat	WB, IHC-P
GTX640153	mGluR5 antibody [HL2876]	Rec Rb mAb	Hu, Ms, Rat	WB
GTX639453	P2Y1 antibody [HL2702]	Rec Rb mAb	Hu	WB
GTX639458	P2Y2 antibody [HL2704]	Rec Rb mAb	Hu, Ms, Rat	WB
GTX639689	P2Y2 antibody [HL2801]	Rec Rb mAb	Ms	IHC-P
GTX639958	PTH1R antibody [HL2817]	Rec Rb mAb	Hu, Ms	WB
GTX637589	RAI3 antibody [HL1864]	Rec Rb mAb	Hu, Ms	WB, ICC/IF, IHC-P
GTX639332	Rhodopsin antibody [HL2668]	Rec Rb mAb	Hu, Ms, Rat, Zfsh	WB, IHC-P, IHC-Wm
GTX639345	Somatostatin receptor 3 antibody [HL2681]	Rec Rb mAb	Hu, Ms	WB, IHC-P
GTX639619	SSTR5 antibody [HL2756]	Rec Rb mAb	Hu	WB
GTX639087	XPR1 antibody [HL2631]	Rec Rb mAb	Hu, Ms	WB, ICC/IF
GTX639088	XPR1 antibody [HL2632]	Rec Rb mAb	Hu, Ms, Rat	WB, ICC/IF, IHC-P

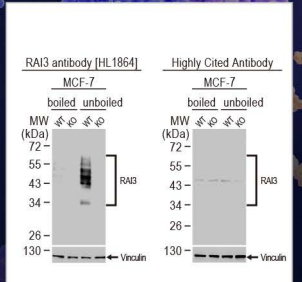
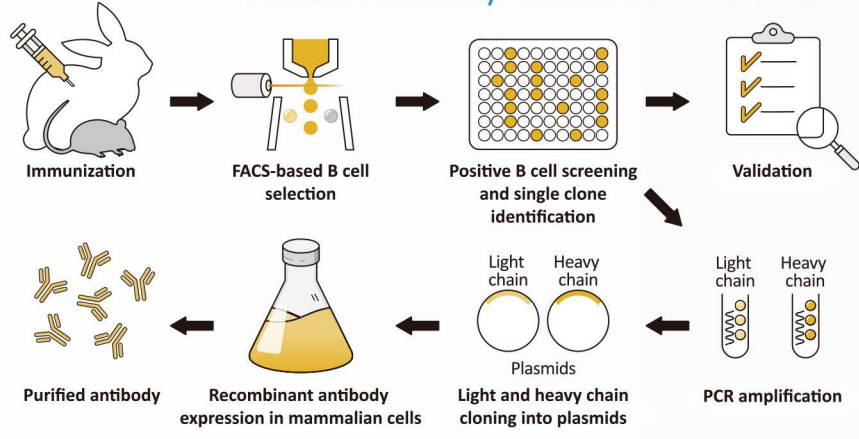




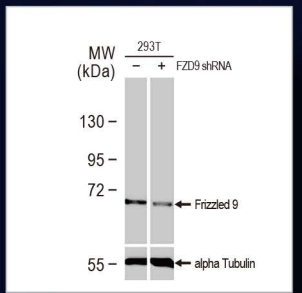
# 5+1 Pillars of Ab Validation

- KO/KD Validation
- Comparable Abs
- IP/MS Analysis
- Orthogonal Validation
- Protein Overexpression

## Recombinant Rabbit Antibody Production Workflow



**RAI3 antibody [HL1864]**  
(GTX637589)

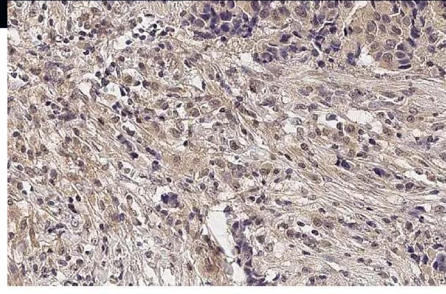


**Frizzled 9 antibody [HL1675]** (GTX637274)

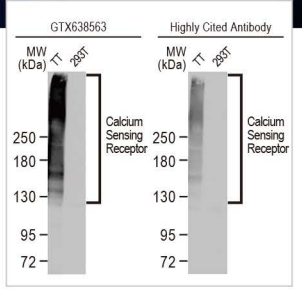


# Class C —&— Class F

- Recombinant
- KO/KD Validation
- Comparable Abs
- Orthogonal Validation
- Protein Overexpression



**mGluR5 antibody [HL2543]**  
(GTX638912)



**Calcium Sensing Receptor antibody [HL2357]**  
(GTX638563)

