



Tumor Suppressor Antibodies

Tumor suppressor proteins are crucial for maintaining cell balance and curbing uncontrolled growth. Studying them and their possible loss-of-function is key in advancing cancer research. Our antibody experts have curated and engineered a refined toolkit to explore and manipulate tumor suppressor functions, with antibody modifications like Fc silencing for low background noise and species swapping for diverse research model compatibility.

Recombinant Antibody Targets

- Cadherins
- Catenin beta-1
- KRAS
- P16
- P53
- P63
- SMARCA4
- TGF-Beta
- Retinoblastoma protein
- And more! (see page 2)

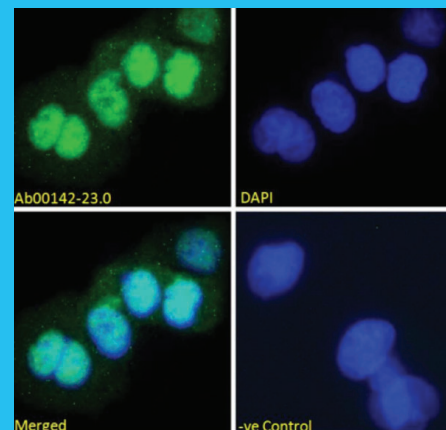
Why Go Recombinant?

Recombinant engineered antibodies from our brand Absolute Antibody, available in diverse formats and species, are essential tools for studying tumor suppressors, enabling specific detection and quantification of protein expression. Additionally, the recombinant antibodies we offer are 100% biologically defined, opening further opportunities for our antibody engineers to customize these tools to your exact experimental needs.

More Research Products

The Absolute Biotech portfolio of companies provides an even more comprehensive menu of antibody-based research tools. Other reagents include:

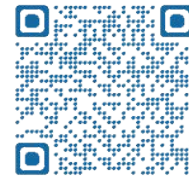
- **Human BRCA1 Antibody ELISA Kits** from LSBio.
- **Mouse Anti-Human SMAD4 Antibody** from LSBio.
- **Goat Anti-VHL Antibody** from Everest Biotech.
- **Mouse Neu-Oncogen Antibody** from Nordic-MUBio/Exalpa.
- **Mouse Anti-P53 Antibody** from Nordic-MUBio/Exalpa.



Anti-p53 [PAb421]. IF of fixed A431 cells with Ab00142.



Anti-E Cadherin [19A11]. WB of MCF7 and Caco-2 cells lysate with Ab03204.



Catalog Number	Antibody Target	Clone Name	Published Applications
Ab00142	p53	PAb421	IHC-P, in vivo, IP, WB, ELISA, IF, IHC-Fr
Ab00871	p63	BU5	FC, IF
Ab00923	p21	Y13-238	IP
Ab01654	alpha catenin	1G5	IP, WB, IF
Ab01655	beta catenin	15B8	EMSA, WB, FC, IF, IHC
Ab01853	RBBP5	RAB-C379	IP-MS, IF
Ab01907	TP53BP1	RAB-C425	IP-MS, IF
Ab02465	Latent TGF-beta1	2F10	ELISA, IF, IHC
Ab02466	TGF-beta1	2H4	ELISA, IF, IHC
Ab02695	p120/catenin	2B12	IP, WB
Ab02737	Gelsolin	GsnVHH 13	IP, WB, ELISA, IF
Ab02738	Gelsolin	GsnVHH 11 (Nb11)	Immunotherapy, IP, WB, ELISA, IF
Ab02776	p53	a.a. 16-25	IP, WB, ELISA, IF
Ab03148	p53	70237-85	WB, ELISA, IHC
Ab03149	p16	30859-S17	WB, ELISA, IHC
Ab03150	p63	60738-10D8	WB, ELISA, IHC
Ab03151	p40	14D5E8F12	ELISA, IHC
Ab03193	B-catenin	3B1D11A8	ELISA, IHC
Ab03219	p21	Y13-259	IP, Neutralizing, WB, IHC
Ab03700	GDF15	Clone 29	Functional Assay, Inhibiting, WB, ELISA
Ab03701	GDF15	MBM-12	Functional Assay, Inhibiting, ELISA
Ab03702	GDF15	MBM-14	Functional Assay, Inhibiting, ELISA
Ab03786	TGF beta1	SL155	Neutralizing, ELISA
Ab03875	p21Ras	KGH-R1	ICC, IHC-FFPE, WB, ELISA, IF
Ab03876	p21Ras	DWP	WB, ELISA, IHC
Ab03877	KRAS G12D mutant	D113	ELISA
Ab03878	KRAS G12C mutant	AbAbKRAS01	WB, ELISA
Ab03951	TGF beta	1D11.16.8	Functional assay, IHC-P, IP, Neutralizing, WB, IHC
Ab04234	KRAS G12V	G12V-34	MTT Cytotoxicity Assay, ELISA, IF