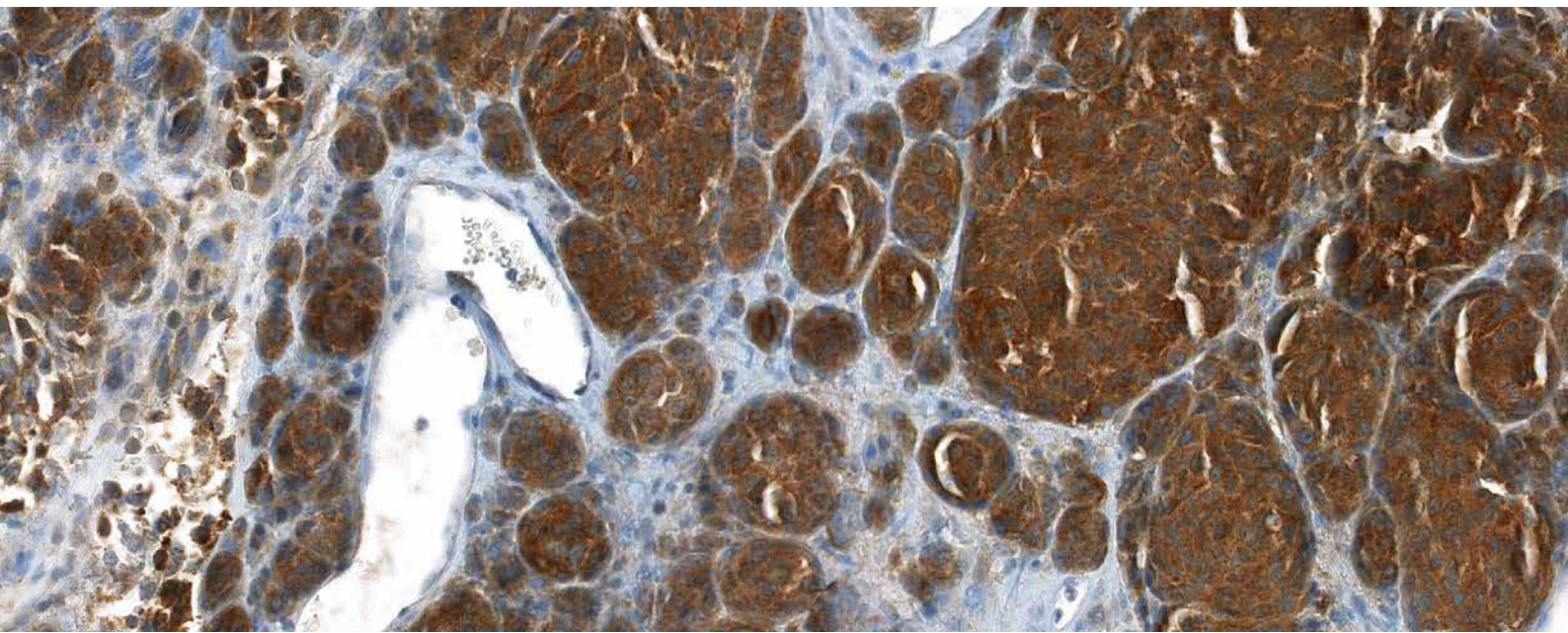


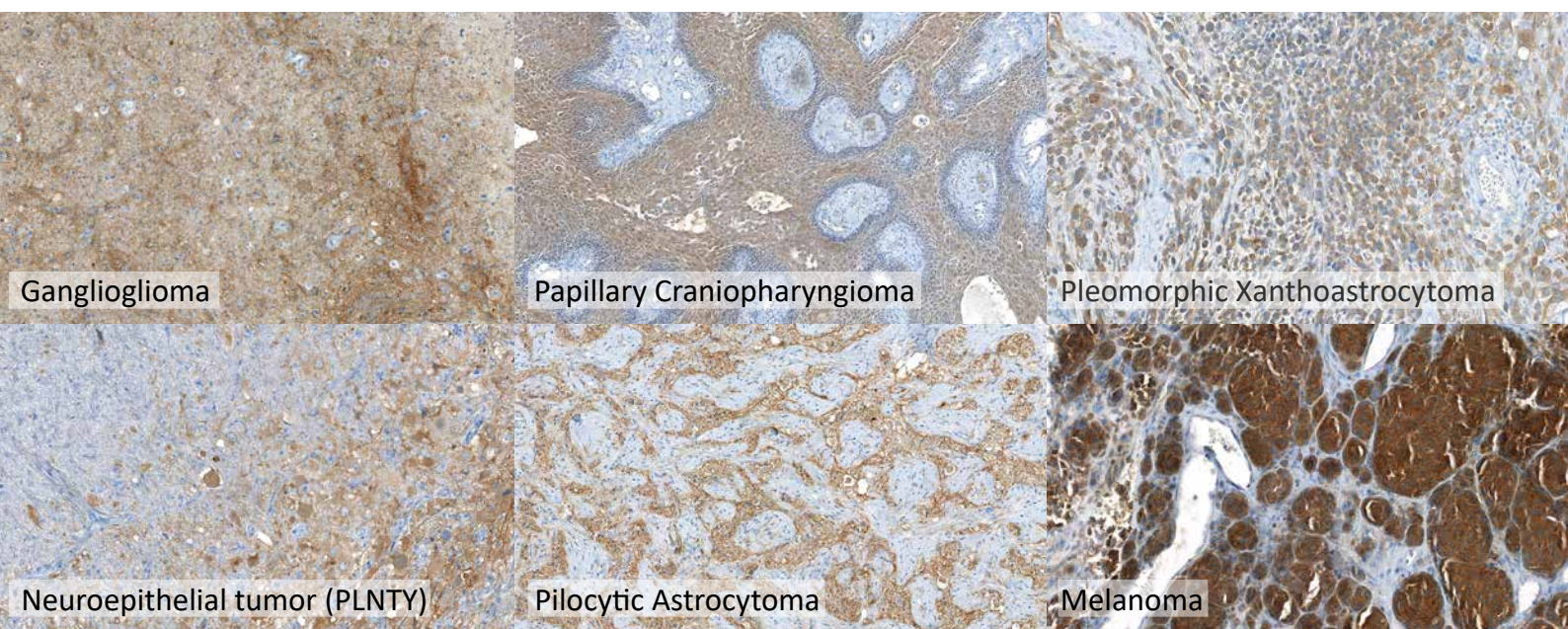
BRAF V600E Antibody Clone HA01

High Dilutability | Strong Signal | Made in Germany by BIOZOL



BRAF V600E Antibody Clone HA01

HA01 is validated on brain tumor entities selected according to the 2021 WHO classification of CNS tumors



Pictures courtesy of Prof. Dr. med. Markus Glatzel, Institute of Neuropathology, University Medical Center, Hamburg-Eppendorf

BRAF V600E as Driver Mutation in Cancer

BRAF V600E is a well-established oncogenic driver mutation with broad clinical implications. Since the first studies of BRAF mutations in cancer in 2002, BRAF V600E has emerged as a critical diagnostic, prognostic and predictive tumor marker.

Clone HA01 for BRAF V600E Histology

Clone HA01 reacts specifically with the BRAF V600E point mutation in tissue sections from routine formalin-fixed paraffin-embedded human tumors (IHC FFPE). This antibody has been validated for the identification of BRAF V600E positive cells in diverse human tumor tissues with an additional focus on neuropathological tissues selected according to WHO guidelines.

- ✓ Specific detection of BRAF V600E mutant cells in tumor sections with delineation from negative areas.
- ✓ High dilutability: >1:200 on Melanoma sections (FFPE)

Anti-BRAF V600E clone HA01 (Ms)		
	Reactivity	Human
	Clone	HA01
	Application	IHC-P 1:100-1:200
	Isotype	IgG2b
	Host	Mouse
SKU	Quantity	Format
DIA-HA01	1 ml	conc.

BRAFV600E V04 03-2025